



MLS 6521918 Lake Home

**\$279,000**

960 sq ft  
2 bedrooms  
2 baths

44250 Posterity Beach Lane  
Waubun MN 56589

Waterfront: Pickerel Lake (Round  
Lake Twp.)

Status: Active

**Description:**

Welcome to your lakeside sanctuary! Nestled along the shores of Pickerel Lake, this charming 2-bedroom, 2-bathroom home offers the perfect blend of comfort, convenience, and breathtaking views. As you step inside, you'll be greeted by a cozy ambiance and modern updates throughout. The living area boasts a convenient walkout design, seamlessly connecting indoor and outdoor living. Step onto the lakeshore deck and enjoy the beauty of this lake, where every sunrise and sunset becomes a work of art. Located just steps from the water's edge, You'll love the endless possibilities. The heart of the home is the well-appointed kitchen, complete with appliances, ample counter space, and stylish cabinetry. Retreat to the two inviting bedrooms. One of the highlights of this property is the expansive heated detached garage, providing ample space for your vehicles, water toys, and workshop needs. With its generous dimensions, this garage offers endless possibilities for storage and hobbies.

**Additional Details:**


Year Built	1997
Lot Acres	0.98
Lot Dimensions	75x560
Garage Stalls	2
School District	435
Taxes	\$1,470
Taxes with Assessments	\$1,470
Tax Year	2023

**Additional Features:**

**Fuel:** Electric, Propane **Heat:** Baseboard, Dual, Fireplace(s)

**Driving Directions:**

Head northeast on Co Hwy 35, turn right onto MN-113 E. After 5.3 miles, Turn left toward Posterity Bch Ln. Continue straight on Posterity Bch Ln & the destination will be on your left.



Listed By:  
Grimes Realty

Affinity Real Estate Inc. participates in the Regional Multiple Listing Service of Minnesota, Inc Broker Reciprocity (sm) program, allowing us to display other broker's listings on our website. All properties are subject to prior sale, change or withdrawal.



**Call Affinity Real Estate**  
**218-237-3333**  
**info@affinityrealestate.com**

Affinity Real Estate - 600 Park Avenue South - Park Rapids MN 56470





website: [www.AffinityRealEstate.com](http://www.AffinityRealEstate.com) | email: [info@affinityrealestate.com](mailto:info@affinityrealestate.com) | office: 218-237-3333 | fax:218-237-3377



**\$279,000**  
MLS 6521918 Lake Home  
44250 Posterity Beach Lane  
Waubun MN 56589





website: [www.AffinityRealEstate.com](http://www.AffinityRealEstate.com) | email: [info@affinityrealestate.com](mailto:info@affinityrealestate.com) | office: 218-237-3333 | fax: 218-237-3377

**Affinity**  
REAL ESTATE INC

**\$279,000**  
MLS 6521918 Lake Home  
44250 Posterity Beach Lane  
Waubun MN 56589





website: [www.AffinityRealEstate.com](http://www.AffinityRealEstate.com) | email: [info@affinityrealestate.com](mailto:info@affinityrealestate.com) | office: 218-237-3333 | fax:218-237-3377



**\$279,000**  
MLS 6521918 Lake Home  
44250 Posterity Beach Lane  
Waubun MN 56589





website: [www.AffinityRealEstate.com](http://www.AffinityRealEstate.com) | email: [info@affinityrealestate.com](mailto:info@affinityrealestate.com) | office: 218-237-3333 | fax:218-237-3377



**\$279,000**  
MLS 6521918 Lake Home  
44250 Posterity Beach Lane  
Waubun MN 56589





website: [www.AffinityRealEstate.com](http://www.AffinityRealEstate.com) | email: [info@affinityrealestate.com](mailto:info@affinityrealestate.com) | office: 218-237-3333 | fax:218-237-3377

**Affinity**  
REAL ESTATE INC

**\$279,000**  
MLS 6521918 Lake Home  
44250 Posterity Beach Lane  
Waubun MN 56589





website: [www.AffinityRealEstate.com](http://www.AffinityRealEstate.com) | email: [info@affinityrealestate.com](mailto:info@affinityrealestate.com) | office: 218-237-3333 | fax: 218-237-3377

**Affinity**  
REAL ESTATE INC

**\$279,000**  
MLS 6521918 Lake Home  
44250 Posterity Beach Lane  
Waubun MN 56589





website: [www.AffinityRealEstate.com](http://www.AffinityRealEstate.com) | email: [info@affinityrealestate.com](mailto:info@affinityrealestate.com) | office: 218-237-3333 | fax:218-237-3377

**Affinity**  
REAL ESTATE INC

**\$279,000**  
MLS 6521918 Lake Home  
44250 Posterity Beach Lane  
Waubun MN 56589





website: [www.AffinityRealEstate.com](http://www.AffinityRealEstate.com) | email: [info@affinityrealestate.com](mailto:info@affinityrealestate.com) | office: 218-237-3333 | fax:218-237-3377



**\$279,000**  
MLS 6521918 Lake Home  
44250 Posterity Beach Lane  
Waubun MN 56589





website: [www.AffinityRealEstate.com](http://www.AffinityRealEstate.com) | email: [info@affinityrealestate.com](mailto:info@affinityrealestate.com) | office: 218-237-3333 | fax:218-237-3377

**Affinity**  
REAL ESTATE INC

**\$279,000**  
MLS 6521918 Lake Home  
44250 Posterity Beach Lane  
Waubun MN 56589





website: [www.AffinityRealEstate.com](http://www.AffinityRealEstate.com) | email: [info@affinityrealestate.com](mailto:info@affinityrealestate.com) | office: 218-237-3333 | fax:218-237-3377

**Affinity**  
REAL ESTATE INC

**\$279,000**  
MLS 6521918 Lake Home  
44250 Posterity Beach Lane  
Waubun MN 56589



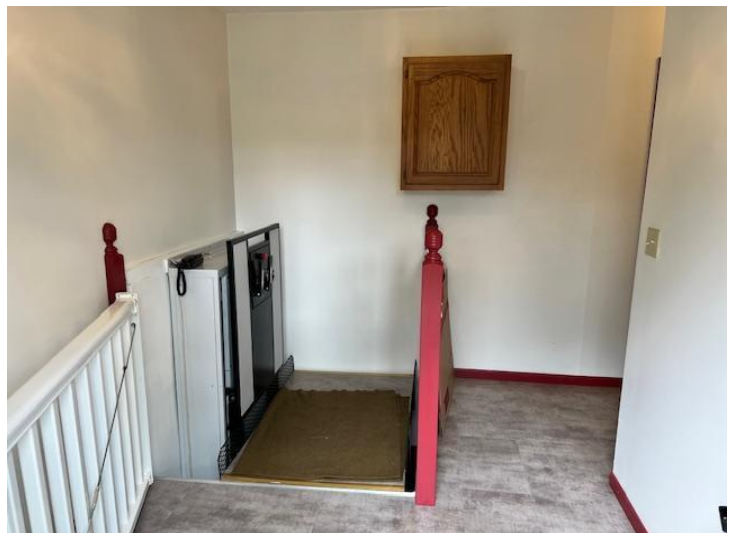


website: [www.AffinityRealEstate.com](http://www.AffinityRealEstate.com) | email: [info@affinityrealestate.com](mailto:info@affinityrealestate.com) | office: 218-237-3333 | fax:218-237-3377

**Affinity**  
REAL ESTATE INC

**\$279,000**  
MLS 6521918 Lake Home  
44250 Posterity Beach Lane  
Waubun MN 56589





website: [www.AffinityRealEstate.com](http://www.AffinityRealEstate.com) | email: [info@affinityrealestate.com](mailto:info@affinityrealestate.com) | office: 218-237-3333 | fax:218-237-3377

**Affinity**  
REAL ESTATE INC

**\$279,000**  
MLS 6521918 Lake Home  
44250 Posterity Beach Lane  
Waubun MN 56589





website: [www.AffinityRealEstate.com](http://www.AffinityRealEstate.com) | email: [info@affinityrealestate.com](mailto:info@affinityrealestate.com) | office: 218-237-3333 | fax:218-237-3377



**\$279,000**  
MLS 6521918 Lake Home  
44250 Posterity Beach Lane  
Waubun MN 56589