



MLS 6522202 Residential

\$255,000

1,175 sq ft
2 bedrooms
2 baths

1615 30th Street
Bemidji MN 56601

Status: Pending

Description:

Fantastic location on the North end of the development overlooking the open area to the North and NE. This end unit at Northridge Cottages offers 2 bedrooms and 1.5 baths all on one level. This townhome features a primary ensuite with shower, walk-in closet, and laundry. Open floor plan with nice natural light, ample kitchen space and a heated single stall garage. Nice care fee living with the association takin care of the lawn care and snow removal. This is ready for you to make your new home!

Additional Details:


Year Built	2017
Lot Acres	0.03
Lot Dimensions	33x41
Garage Stalls	1
School District	31
Taxes	\$3,030
Taxes with Assessments	\$2,824
Tax Year	2024

Additional Features:

Basement: Slab **Fuel:** Natural Gas **Garage:** 1 **Heat:** Forced Air **Sewer:** City Sewer/Connected **Water:** City Water/Connected **Air Conditioning:** Central Air

Driving Directions:

From Paul Bunyan DR NW, turn right onto Ridgeway Ave NW, turn left onto 30th St NW and North Ridge Cottages will be on your right.

 Listed By:
Coldwell Banker Crown Realtors

Affinity Real Estate Inc. participates in the Regional Multiple Listing Service of Minnesota, Inc Broker Reciprocity (sm) program, allowing us to display other broker's listings on our website. All properties are subject to prior sale, change or withdrawal.

 **Call Affinity Real Estate**
218-237-3333
info@affinityrealestate.com

Affinity Real Estate - 600 Park Avenue South - Park Rapids MN 56470



website: www.AffinityRealEstate.com | email: info@affinityrealestate.com | office: 218-237-3333 | fax: 218-237-3377



\$255,000
MLS 6522202 Residential
1615 30th Street
Bemidji MN 56601



website: www.AffinityRealEstate.com | email: info@affinityrealestate.com | office: 218-237-3333 | fax: 218-237-3377

Affinity
REAL ESTATE INC

\$255,000
MLS 6522202 Residential
1615 30th Street
Bemidji MN 56601



website: www.AffinityRealEstate.com | email: info@affinityrealestate.com | office: 218-237-3333 | fax:218-237-3377

Affinity
REAL ESTATE INC

\$255,000
MLS 6522202 Residential
1615 30th Street
Bemidji MN 56601



website: www.AffinityRealEstate.com | email: info@affinityrealestate.com | office: 218-237-3333 | fax:218-237-3377



\$255,000
MLS 6522202 Residential
1615 30th Street
Bemidji MN 56601



website: www.AffinityRealEstate.com | email: info@affinityrealestate.com | office: 218-237-3333 | fax:218-237-3377



\$255,000
MLS 6522202 Residential
1615 30th Street
Bemidji MN 56601



1615 30th St NW, Unit 12

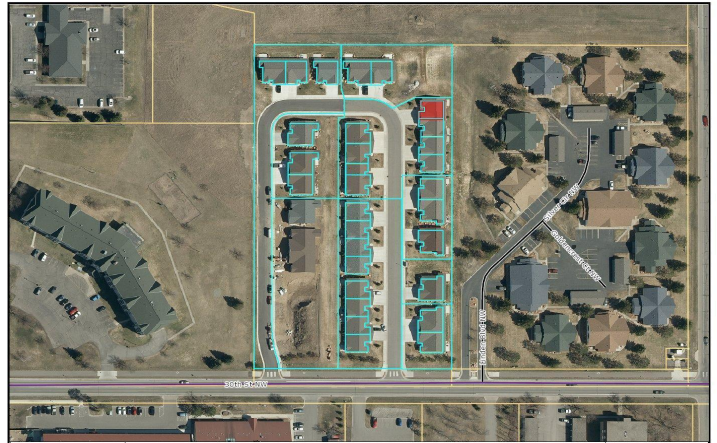
Beltrami
County
Minnesota

These data are provided on an "AS-IS" basis, without warranty of any type, expressed or implied, including but not limited to any warranty as to their performance, merchantability, or fitness for any particular purpose.

1:828

Date: 4/19/2024

This map is not a substitute for accurate field surveys or for locating actual property lines and any adjacent features.



1615 30th St NW, Unit 12

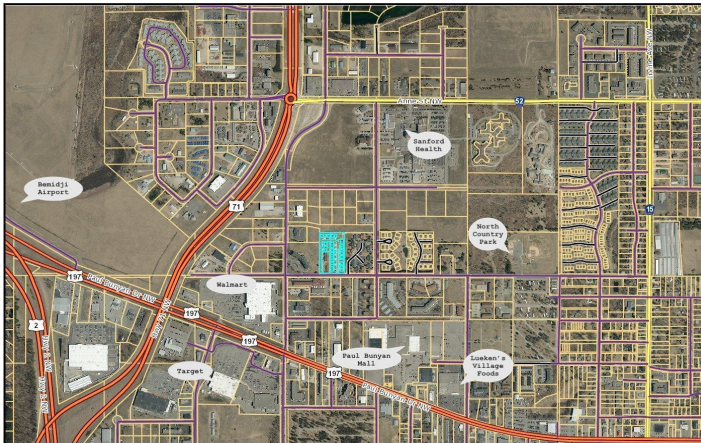
Beltrami
County
Minnesota

These data are provided on an "AS-IS" basis, without warranty of any type, expressed or implied, including but not limited to any warranty as to their performance, merchantability, or fitness for any particular purpose.

1:2.113

Date: 4/19/2024

This map is not a substitute for accurate field surveys or for locating actual property lines and any adjacent features.



1615 30th St NW, Unit 12

Beltrami
County
Minnesota

These data are provided on an "AS-IS" basis, without warranty of any type, expressed or implied, including but not limited to any warranty as to their performance, merchantability, or fitness for any particular purpose.

1:16.901

Date: 4/19/2024

This map is not a substitute for accurate field surveys or for locating actual property lines and any adjacent features.

website: www.AffinityRealEstate.com | email: info@affinityrealestate.com | office: 218-237-3333 | fax:218-237-3377



\$255,000
MLS 6522202 Residential
1615 30th Street
Bemidji MN 56601