



MLS 6522497 Land

**\$49,900**

6.71 Acres  
Plat Designed

TBD TBD  
Dent MN 56528

Status: Active

#### Description:

Ready to Build! Beautiful level lot of 6.71 Acres next to Lake Marion, south of Perham MN. Electrical Box is located on the property.

#### Additional Details:

Lot Acres	6.71
Lot Dimensions	irregular
School District	549
Taxes	\$198
Taxes with Assessments	\$198
Tax Year	2023

#### Additional Features:

#### Driving Directions:

Travel to Perham on hwy10, turn south on 78, W on 108 and South on county 49. Close to Marion Lake.



Listed By:  
RE/MAX Legacy Realty

Affinity Real Estate Inc. participates in the Regional Multiple Listing Service of Minnesota, Inc Broker Reciprocity (sm) program, allowing us to display other broker's listings on our website. All properties are subject to prior sale, change or withdrawal.



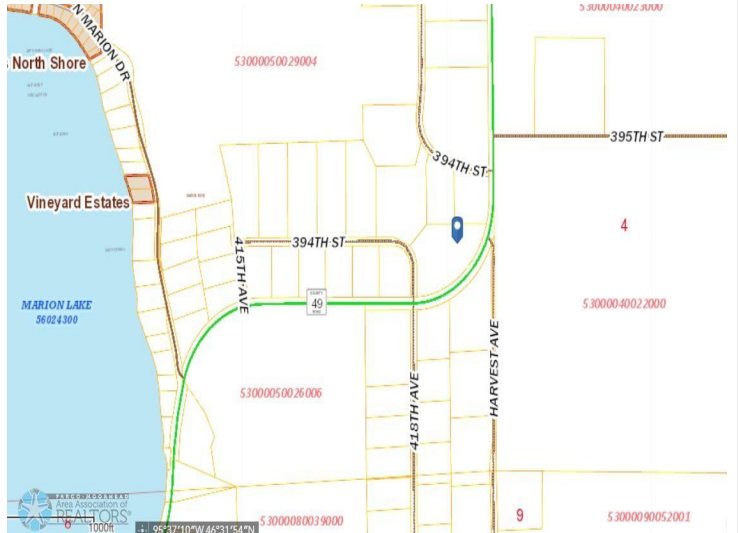
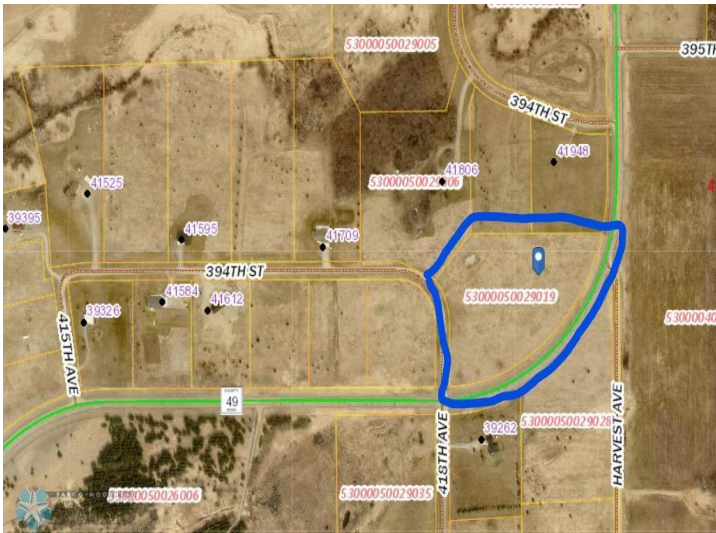
Call Affinity Real Estate

**218-237-3333**

[info@affinityrealestate.com](mailto:info@affinityrealestate.com)



Affinity Real Estate - 600 Park Avenue South - Park Rapids MN 56470



website: [www.AffinityRealEstate.com](http://www.AffinityRealEstate.com) | email: [info@affinityrealestate.com](mailto:info@affinityrealestate.com) | office: 218-237-3333 | fax: 218-237-3377



**\$49,900**  
 MLS 6522497 Land  
 TBD TBD  
 Dent MN 56528