



MLS 6523026 Residential

\$379,000

2,548 sq ft
4 bedrooms
2 baths

14594 Woodland Drive
Detroit Lakes MN 56501

Status: Pending

Description:

Located only a few minutes from Detroit Lakes and close to many paved walking trails in the Hidden Hills area! Private and wooded lot with beautiful landscaping and a paved driveway. Updated 4 bedroom 2 bath multi-level homestead on a beautiful 1.25 acre lot, with a detached garage, and 22x34 pole shed! Many updates including the septic system, windows, siding, deck, covered porch, and more! Open kitchen with a center island, stainless steel appliances, and hickory cabinets. Enjoy your free time in the covered porch, on the large deck, the fire pit area, or in the hot tub. Swing set included.

Additional Details:

Year Built	1975
Lot Acres	1.25
Lot Dimensions	1.25 acres
Garage Stalls	3
School District	22
Taxes	\$2,658
Taxes with Assessments	\$2,658
Tax Year	2023

Additional Features:

Basement: Block **Fuel:** Electric, Natural Gas **Garage:** 3 **Heat:** Baseboard, Forced Air **Sewer:** Private Sewer, Septic System Compliant - Yes
Water: Drilled, Private **Air Conditioning:** Central Air

Driving Directions:

From Detroit Lakes go SE on Hwy 54 approx. 2 miles, turn left on Woodland Dr and follow to the property on the left side.



Listed By:
Counselor Realty of Detroit Lakes

Affinity Real Estate Inc. participates in the Regional Multiple Listing Service of Minnesota, Inc Broker Reciprocity (sm) program, allowing us to display other broker's listings on our website. All properties are subject to prior sale, change or withdrawal.



Call Affinity Real Estate

218-237-3333

info@affinityrealestate.com



Affinity Real Estate - 600 Park Avenue South - Park Rapids MN 56470



website: www.AffinityRealEstate.com | email: info@affinityrealestate.com | office: 218-237-3333 | fax: 218-237-3377



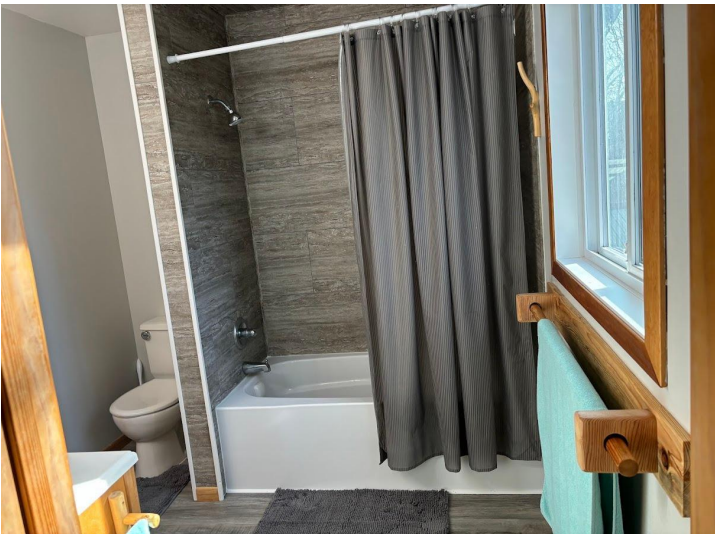
\$379,000
MLS 6523026 Residential
14594 Woodland Drive
Detroit Lakes MN 56501



website: www.AffinityRealEstate.com | email: info@affinityrealestate.com | office: 218-237-3333 | fax: 218-237-3377

Affinity
REAL ESTATE INC

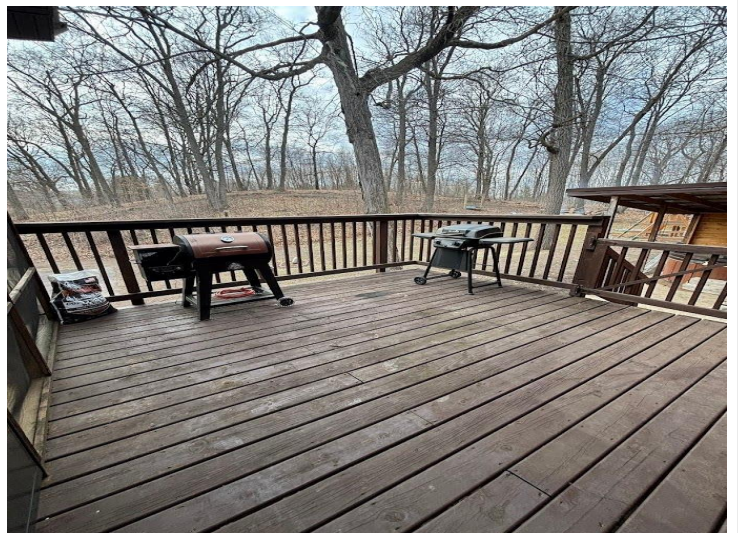
\$379,000
MLS 6523026 Residential
14594 Woodland Drive
Detroit Lakes MN 56501



website: www.AffinityRealEstate.com | email: info@affinityrealestate.com | office: 218-237-3333 | fax: 218-237-3377



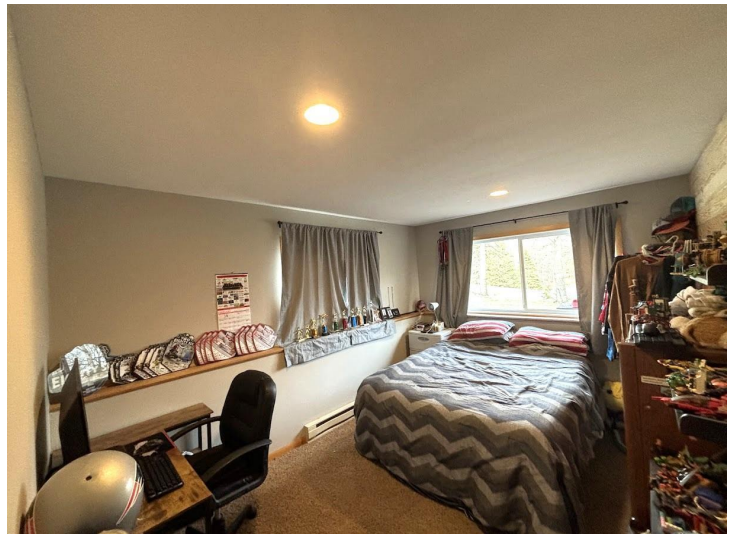
\$379,000
 MLS 6523026 Residential
 14594 Woodland Drive
 Detroit Lakes MN 56501



website: www.AffinityRealEstate.com | email: info@affinityrealestate.com | office: 218-237-3333 | fax: 218-237-3377



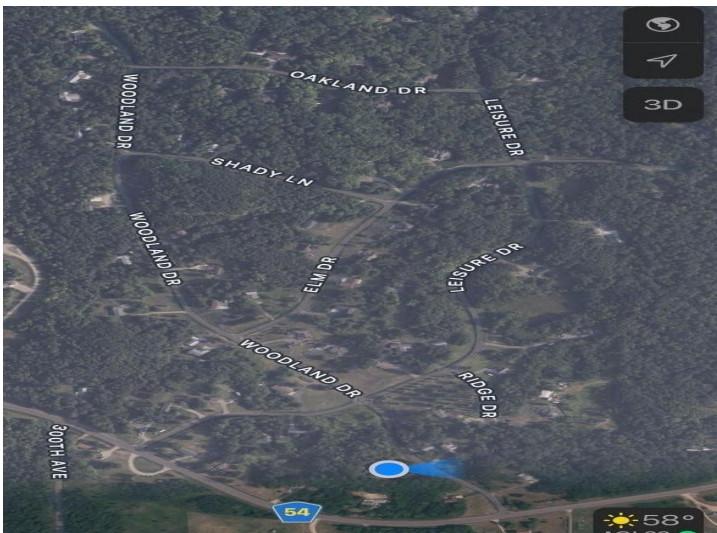
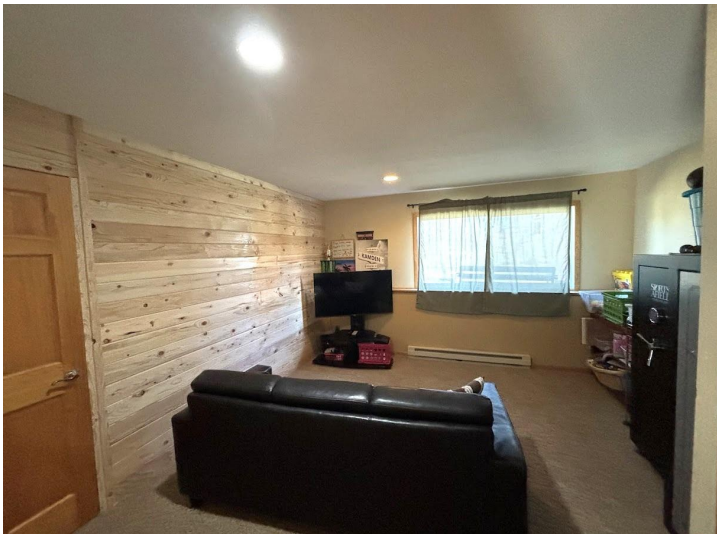
\$379,000
 MLS 6523026 Residential
 14594 Woodland Drive
 Detroit Lakes MN 56501



website: www.AffinityRealEstate.com | email: info@affinityrealestate.com | office: 218-237-3333 | fax: 218-237-3377

Affinity
REAL ESTATE INC

\$379,000
MLS 6523026 Residential
14594 Woodland Drive
Detroit Lakes MN 56501



website: www.AffinityRealEstate.com | email: info@affinityrealestate.com | office: 218-237-3333 | fax: 218-237-3377



\$379,000
 MLS 6523026 Residential
 14594 Woodland Drive
 Detroit Lakes MN 56501