



MLS 6523399 Land

\$33,900

0.4 Acres
Finished Lot(s)

TBD Woodland Avenue
Bemidji MN 56601

Status: Active

Description:

Build your forever home on this beautiful, corner, level .39 acre lot. Come see in person this nice property and check out the views across the street of Lake Irving. This lot is close to the Lake Irving public access, where you are welcome to canoe, kayak or paddle board. The property has been surveyed.

Additional Details:

Lot Acres	0.4
Lot Dimensions	175x188x87x22x73x17
School District	31
Taxes	\$212
Taxes with Assessments	\$212
Tax Year	2024

Additional Features:

Driving Directions:

From downtown Bemidji take Irvine Ave south over the bridge at 3rd St. Keep Right merge onto Woodland Ave SW. Lot is the corner of Woodland and Mississippi Ave.



Listed By:
Better Homes and Gardens Real Estate First Choice

Affinity Real Estate Inc. participates in the Regional Multiple Listing Service of Minnesota, Inc Broker Reciprocity (sm) program, allowing us to display other broker's listings on our website. All properties are subject to prior sale, change or withdrawal.



Call Affinity Real Estate

218-237-3333

info@affinityrealestate.com



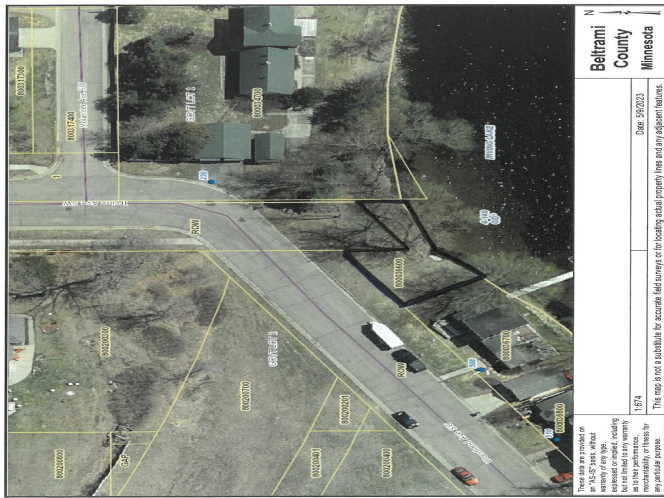
Affinity Real Estate - 600 Park Avenue South - Park Rapids MN 56470



website: www.AffinityRealEstate.com | email: info@affinityrealestate.com | office: 218-237-3333 | fax: 218-237-3377



\$33,900
MLS 6523399 Land
TBD Woodland Avenue
Bemidji MN 56601



website: www.AffinityRealEstate.com | email: info@affinityrealestate.com | office: 218-237-3333 | fax: 218-237-3377

Affinity
REAL ESTATE INC

\$33,900
MLS 6523399 Land
TBD Woodland Avenue
Bemidji MN 56601