



MLS 6523830 Lake Land

\$245,000



Description:

Detroit Lakes - Rare opportunity! Build your dream home and enjoy 76' of shared lake access on Little Detroit Lake. Not only is this the last buildable lot remaining in this modern farmhouse-style community, but it also includes a boat slip. Close to everything you love about Detroit Lakes: the lake, beach, walking/bike trail, and restaurants. Embrace the convenience of city water and sewer, plus underground utilities, all seamlessly integrated into this prime location. HOA includes snow removal, dock installation, common area maintenance/insurance. Owner is related to listing agent.

Additional Details:

| | |
|------------------------|-----------|
| Lot Acres | 0.3 |
| Lot Dimensions | irregular |
| School District | 22 |
| Taxes | \$1,958 |
| Taxes with Assessments | \$2,020 |
| Tax Year | 2024 |

Additional Features:

Driving Directions:

West Lake Drive to Landing Lane



Listed By:
Counselor Realty of Detroit Lakes

Affinity Real Estate Inc. participates in the Regional Multiple Listing Service of Minnesota, Inc Broker Reciprocity (sm) program, allowing us to display other broker's listings on our website. All properties are subject to prior sale, change or withdrawal.



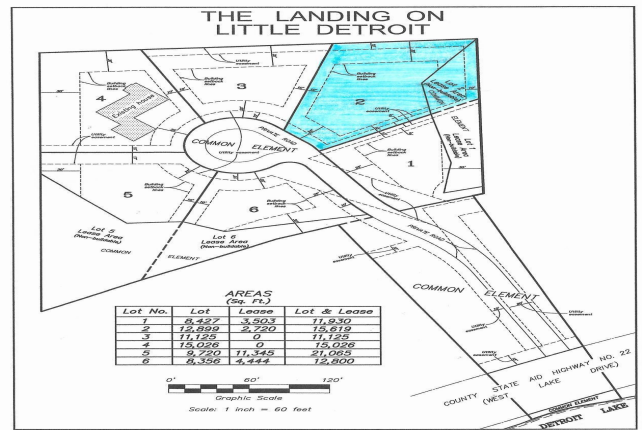
Call Affinity Real Estate

218-237-3333

info@affinityrealestate.com



Affinity Real Estate - 600 Park Avenue South - Park Rapids MN 56470



website: www.AffinityRealEstate.com | email: info@affinityrealestate.com | office: 218-237-3333 | fax: 218-237-3377

Affinity
REAL ESTATE INC

\$245,000
MLS 6523830 Lake Land
1047 Landing Lane
Detroit Lakes MN 56501



website: www.AffinityRealEstate.com | email: info@affinityrealestate.com | office: 218-237-3333 | fax: 218-237-3377



\$245,000

MLS 6523830 Lake Land
1047 Landing Lane
Detroit Lakes MN 56501