



MLS 6523929 Residential

\$169,900

1,352 sq ft
3 bedrooms
1 baths

510 Front Avenue
Park Rapids MN 56470

Status: Pending

Description:

Discover this cozy 3-bedroom, 1-bathroom Park Rapids city home featuring a versatile bonus room, ideally located on a corner lot. Complete with a 20' x 26' garage, this home combines comfort with convenience, just steps away from the hospital and a short walk to downtown Park Rapids. Enjoy nearby shopping, dining, entertainment, Heartland Park, the Heartland Trail, and local schools. Perfect for anyone from first-time home buyers to downsizers, this property is close to all city amenities while offering a peaceful neighborhood setting. Priced to sell, this home is a must-see. Don't miss your chance to own this delightful property. Schedule your viewing today!

Additional Details:

Year Built	1949
Lot Acres	0.16
Lot Dimensions	50x140
Garage Stalls	2
School District	309
Taxes	\$1,186
Taxes with Assessments	\$2,316
Tax Year	2024

Additional Features:

Basement: Block **Fuel:** Natural Gas **Garage:** 2 **Heat:** Forced Air **Sewer:** City Sewer/Connected **Water:** City Water/Connected **Air Conditioning:** Central Air

Driving Directions:

From Hwys. 71/34 in Park Rapids, go West on Hwy 34 and turn left on Pleasant Ave. Then turn right on 6th Street to property on right 510 Front Ave.



Listed By:
Coldwell Banker Crown Realtors

Affinity Real Estate Inc. participates in the Regional Multiple Listing Service of Minnesota, Inc Broker Reciprocity (sm) program, allowing us to display other broker's listings on our website. All properties are subject to prior sale, change or withdrawal.



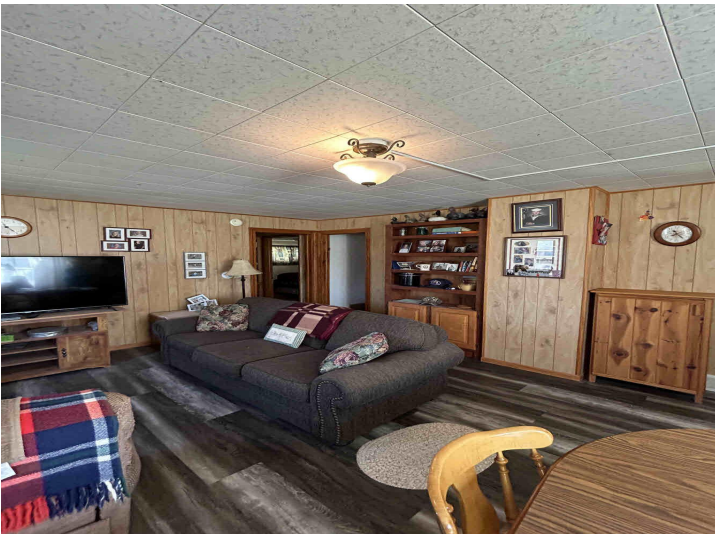
Call Affinity Real Estate

218-237-3333

info@affinityrealestate.com



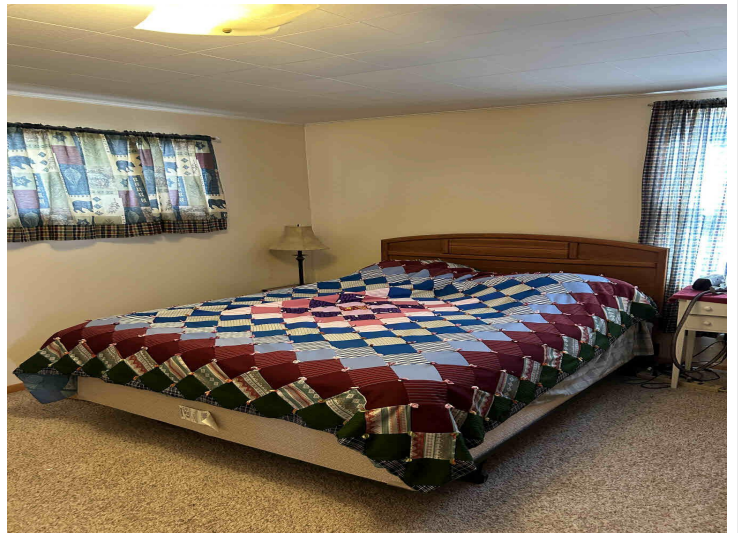
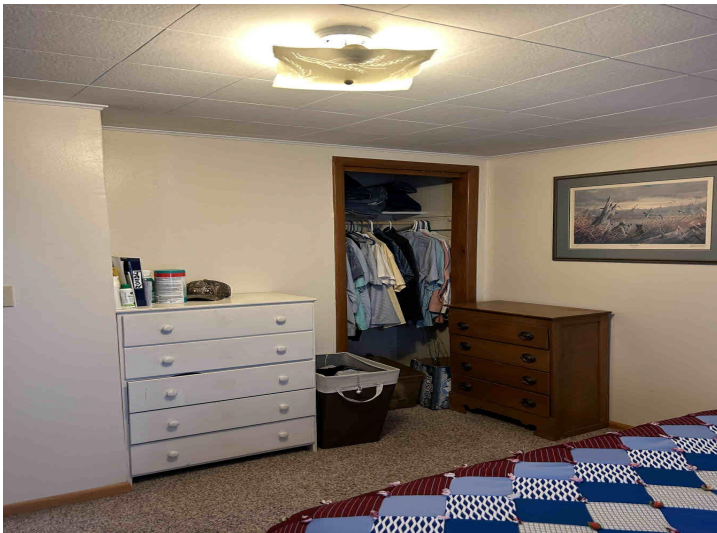
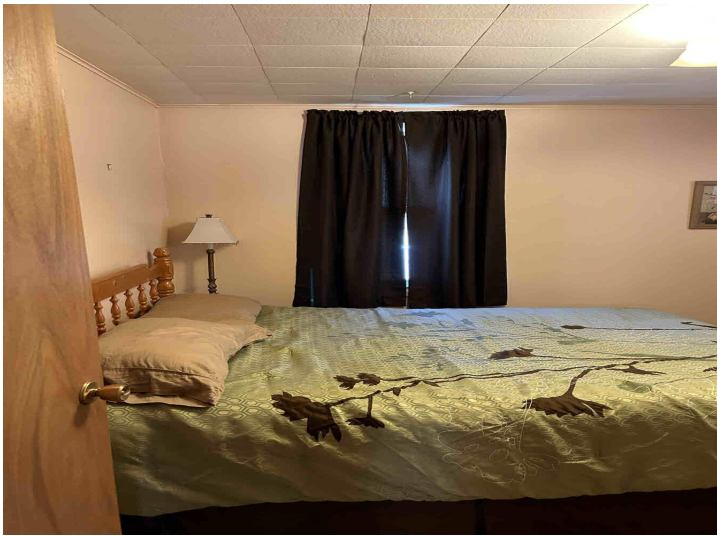
Affinity Real Estate - 600 Park Avenue South - Park Rapids MN 56470



website: www.AffinityRealEstate.com | email: info@affinityrealestate.com | office: 218-237-3333 | fax: 218-237-3377

Affinity
REAL ESTATE INC

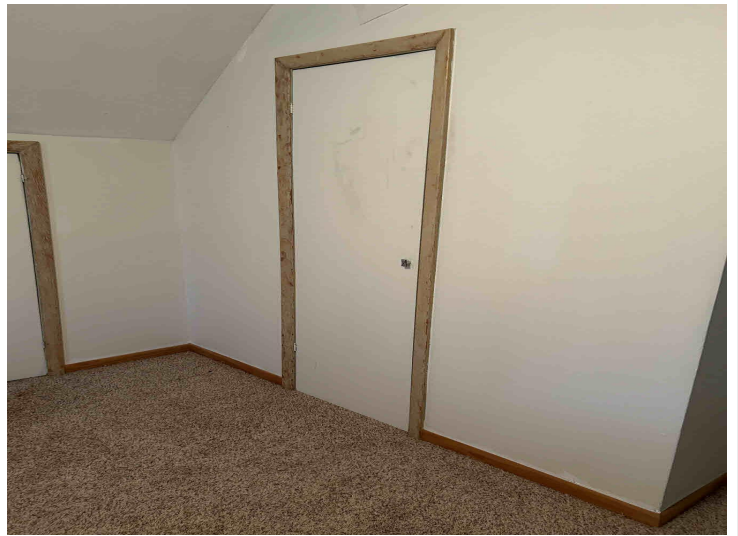
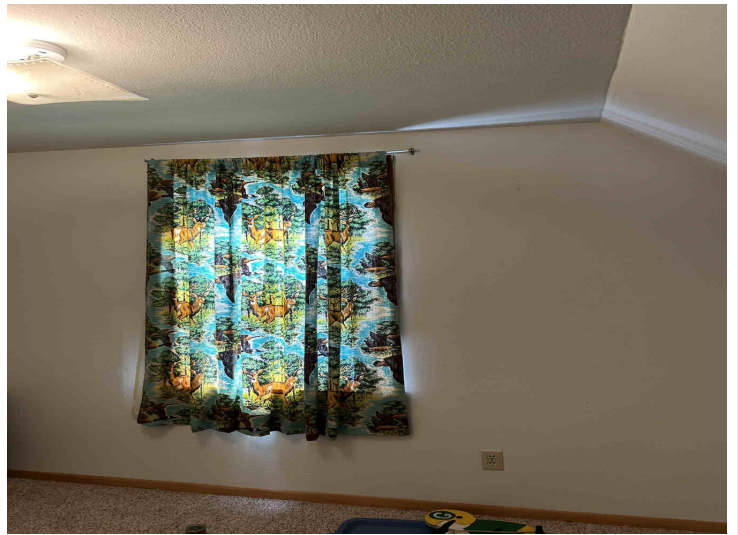
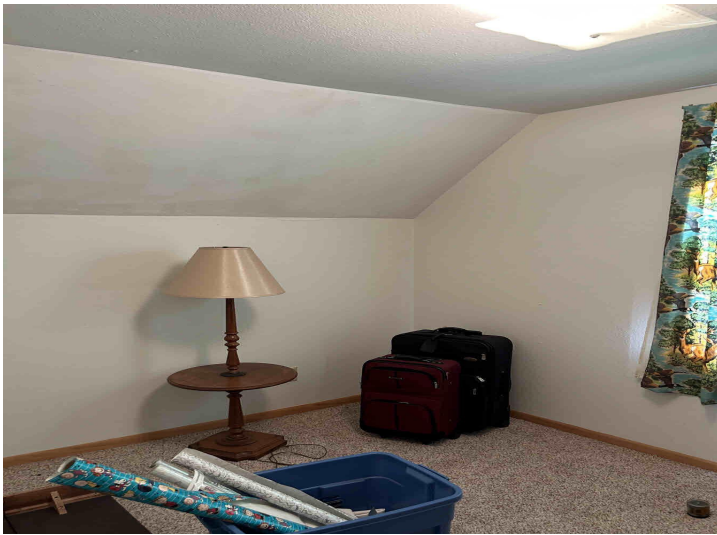
\$169,900
MLS 6523929 Residential
510 Front Avenue
Park Rapids MN 56470



website: www.AffinityRealEstate.com | email: info@affinityrealestate.com | office: 218-237-3333 | fax: 218-237-3377



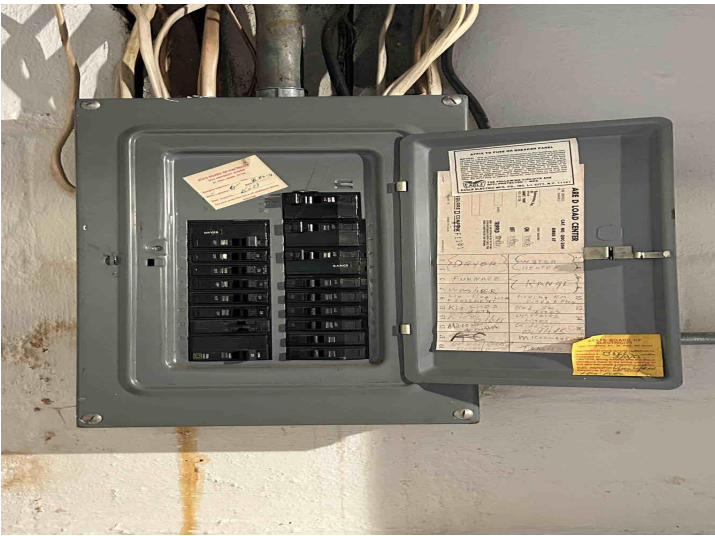
\$169,900
 MLS 6523929 Residential
 510 Front Avenue
 Park Rapids MN 56470



website: www.AffinityRealEstate.com | email: info@affinityrealestate.com | office: 218-237-3333 | fax: 218-237-3377

Affinity
REAL ESTATE INC

\$169,900
MLS 6523929 Residential
510 Front Avenue
Park Rapids MN 56470



website: www.AffinityRealEstate.com | email: info@affinityrealestate.com | office: 218-237-3333 | fax: 218-237-3377

Affinity
REAL ESTATE INC

\$169,900
MLS 6523929 Residential
510 Front Avenue
Park Rapids MN 56470



website: www.AffinityRealEstate.com | email: info@affinityrealestate.com | office: 218-237-3333 | fax: 218-237-3377



\$169,900
MLS 6523929 Residential
510 Front Avenue
Park Rapids MN 56470