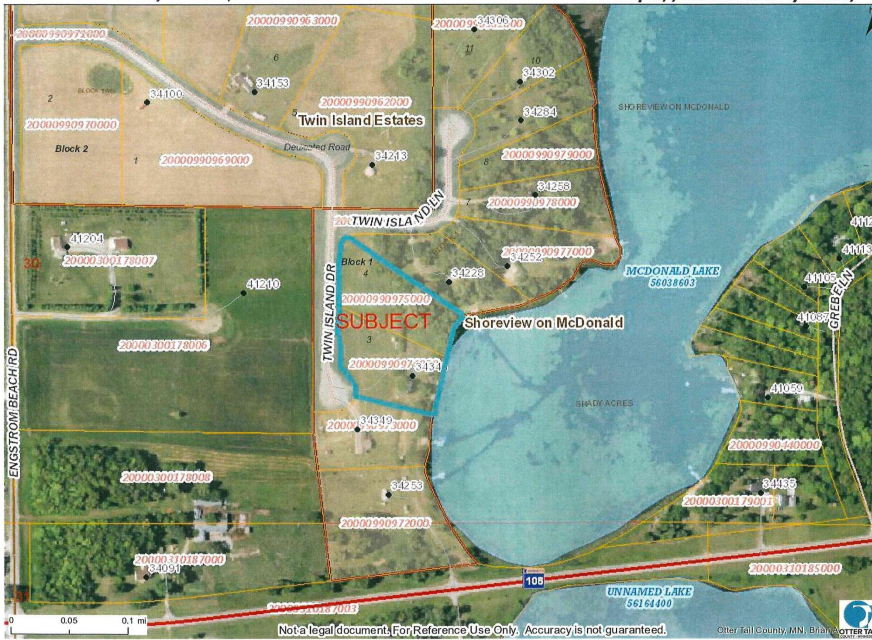




MLS 6523957 Lake Land

\$265,000**Description:**

McDonald Lake: 2 buildable lots that provide plenty of privacy with approx. 3.2 acres and 355' of frontage. Frontage has weeds but provides access to an excellent recreational lake. Lot includes a 10x16 storage shed with 4x10 covered deck and a 5th wheel camper. Improvements also include well, power to the lot, dock, and lift. McDonald Lake is 561 acres with a max depth of 33' with water clarity of 13'.

Additional Details:

Lot Acres	3.2
Lot Dimensions	355x260
School District	549
Taxes	\$2,100
Taxes with Assessments	\$2,100
Tax Year	2024

Additional Features:**Driving Directions:**

From Dent: West on Hwy #108. North on Engstrom Beach Rd. East on Twin Island Dr to #34343.



Listed By:
Coldwell Banker Preferred Partners

Affinity Real Estate Inc. participates in the Regional Multiple Listing Service of Minnesota, Inc Broker Reciprocity (sm) program, allowing us to display other broker's listings on our website. All properties are subject to prior sale, change or withdrawal.



Call Affinity Real Estate

218-237-3333**info@affinityrealestate.com**

Affinity Real Estate - 600 Park Avenue South - Park Rapids MN 56470



website: www.AffinityRealEstate.com | email: info@affinityrealestate.com | office: 218-237-3333 | fax: 218-237-3377

Affinity
REAL ESTATE INC

\$265,000
MLS 6523957 Lake Land
34343 Twin Island Drive
Dent MN 56528



website: www.AffinityRealEstate.com | email: info@affinityrealestate.com | office: 218-237-3333 | fax: 218-237-3377



\$265,000

MLS 6523957 Lake Land
34343 Twin Island Drive
Dent MN 56528