



MLS 6524041 Land

**\$49,900**

1.67 Acres  
Finished Lot(s)

26753 Fawn Forest Road  
Nisswa MN 56468

Status: Closed

**Description:**

Great Building Site! Located in the heart of Lake Country. Very private, beautiful trees and level building envelope. Easy access to golf, restaurants, schools, and all the fun attractions Central Minnesota's Beautiful Lakes Area offers.

**Additional Details:**

Lot Acres	1.67
Lot Dimensions	360x410x299x188
School District	181
Taxes	\$466
Taxes with Assessments	\$466
Tax Year	2024

**Additional Features:**

**Driving Directions:**

From Nisswa, Hwy 371 North to West of County Rd 29, to left on Fawn Forest Rd to lot and sign on the right.



Listed By:  
Kurilla Real Estate LTD

Affinity Real Estate Inc. participates in the Regional Multiple Listing Service of Minnesota, Inc Broker Reciprocity (sm) program, allowing us to display other broker's listings on our website. All properties are subject to prior sale, change or withdrawal.



**Call Affinity Real Estate**

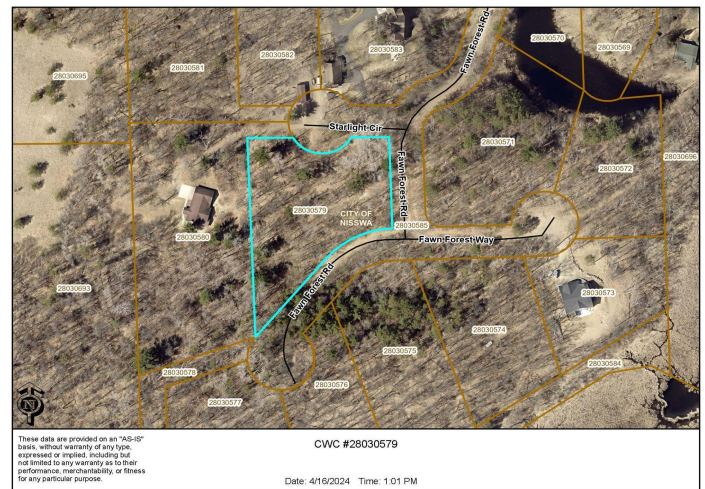
**218-237-3333**

**info@affinityrealestate.com**



**Affinity Real Estate - 600 Park Avenue South - Park Rapids MN 56470**





website: [www.AffinityRealEstate.com](http://www.AffinityRealEstate.com) | email: [info@affinityrealestate.com](mailto:info@affinityrealestate.com) | office: 218-237-3333 | fax: 218-237-3377



**\$49,900**  
 MLS 6524041 Land  
 26753 Fawn Forest Road  
 Nisswa MN 56468





website: [www.AffinityRealEstate.com](http://www.AffinityRealEstate.com) | email: [info@affinityrealestate.com](mailto:info@affinityrealestate.com) | office: 218-237-3333 | fax: 218-237-3377



**\$49,900**  
MLS 6524041 Land  
26753 Fawn Forest Road  
Nisswa MN 56468