



MLS 6524135 Land

\$350,000

58.4 Acres
Raw Land

TBD 13th Ave
Pequot Lakes MN 56472

Status: Active

Description:

Whether you looking for a hunters paradise or would like to build your ideal country home this 58.4 acre property has what you are looking for.

Loon Lake township also allows 2.5 acre lot splits if your looking for an investment property.

Additional Details:

| | |
|------------------------|-----------|
| Lot Acres | 58.4 |
| Lot Dimensions | irregular |
| School District | 186 |
| Taxes | \$256 |
| Taxes with Assessments | \$256 |
| Tax Year | 2023 |

Additional Features:

Driving Directions:

West of Pequot Lakes on hwy 168 then north on 13th Ave SW. Sign on East side of road just past the intersection of 62nd St SW



Listed By:
Northland Sotheby's International Realty

Affinity Real Estate Inc. participates in the Regional Multiple Listing Service of Minnesota, Inc Broker Reciprocity (sm) program, allowing us to display other broker's listings on our website. All properties are subject to prior sale, change or withdrawal.



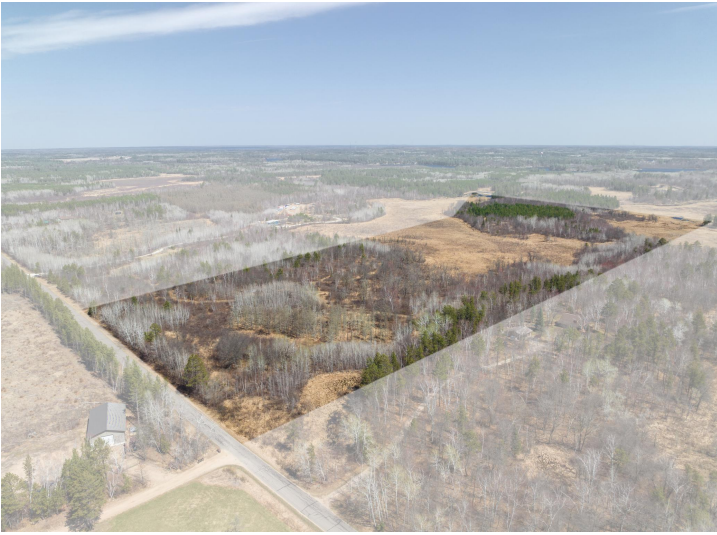
Call Affinity Real Estate

218-237-3333

info@affinityrealestate.com



Affinity Real Estate - 600 Park Avenue South - Park Rapids MN 56470



website: www.AffinityRealEstate.com | email: info@affinityrealestate.com | office: 218-237-3333 | fax:218-237-3377



\$350,000
MLS 6524135 Land
TBD 13th Ave
Pequot Lakes MN 56472



website: www.AffinityRealEstate.com | email: info@affinityrealestate.com | office: 218-237-3333 | fax:218-237-3377



\$350,000
MLS 6524135 Land
TBD 13th Ave
Pequot Lakes MN 56472