



MLS 6524212 Lake Land

\$119,900

Description:

"Here's your chance." Lake lots on Little Blueberry Lake rarely become available. Don't let this opportunity slip away -- call today to own your own piece of paradise. Located just minutes southwest of Park Rapids, MN, build your dream home, cabin, or create your weekend camping retreat and enjoy the peaceful beauty of northern Minnesota living at its best! Whether you enjoy swimming, fishing, boating, or just soaking up the serenity, this property has everything you need for the ultimate lake life experience. Call today!

Additional Details:

Lot Acres	0.96
Lot Dimensions	171x267x142x285
School District	821
Taxes	\$256
Taxes with Assessments	\$256
Tax Year	2024

Additional Features:

Driving Directions:

From Hwys. 71/34 in Park Rapids, go South on HWY 71 for 3.1 miles, right on County Rd 14, continue 6.3 miles. Turn left on County Rd 125 for 2.0 miles to right on 181st Street for 0.5 miles. Right on South Blueberry Rd, property on the right.



Listed By:
Coldwell Banker Crown Realtors

Affinity Real Estate Inc. participates in the Regional Multiple Listing Service of Minnesota, Inc Broker Reciprocity (sm) program, allowing us to display other broker's listings on our website. All properties are subject to prior sale, change or withdrawal.



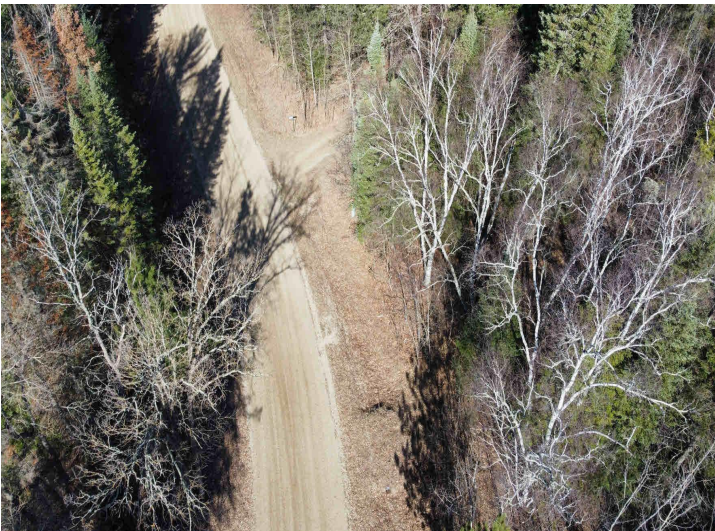
Call Affinity Real Estate

218-237-3333

info@affinityrealestate.com



Affinity Real Estate - 600 Park Avenue South - Park Rapids MN 56470



website: www.AffinityRealEstate.com | email: info@affinityrealestate.com | office: 218-237-3333 | fax: 218-237-3377



\$119,900
MLS 6524212 Lake Land
17531 Blueberry Road
Menahga MN 56464



website: www.AffinityRealEstate.com | email: info@affinityrealestate.com | office: 218-237-3333 | fax: 218-237-3377



\$119,900
MLS 6524212 Lake Land
17531 Blueberry Road
Menahga MN 56464