



MLS 6524372 Lake Home

\$589,000

1,632 sq ft
3 bedrooms
2 baths

20306 County Road 131
Detroit Lakes MN 56501

Waterfront: Floyd Lake

Status: Pending

Description:

Big Floyd....sandy hard bottom with level lake shore. 66 front feet of beautiful shoreline. 3 bedroom 2 bath waiting for your inspiration. Cozy living room along with a family room on the main floor. Walk out patio off of the kitchen for easy grilling access and lakeside entertaining. Sought after boat house with window views of the lake. Boat house has storage for lake toys beneath. Detached 2 stall completes the lake side of this property. Need more room? 2.27 acres across the street included for elbow room. 24x24 garage along with 2 sheds 12x20 & 12x16 for storage. Lake properties like this are becoming less and less available. Grab this treasure today.

Additional Details:

Year Built	1960
Lot Acres	2.5
Lot Dimensions	66 x 150 +
Garage Stalls	2
School District	22
Taxes	\$3,162
Taxes with Assessments	\$3,162
Tax Year	2024

Additional Features:

Basement: Crawl Space **Fuel:** Propane **Garage:** 2 **Heat:** Forced Air, Fireplace(s) **Sewer:** Holding Tank, Private Sewer **Water:** Private **Air Conditioning:** Central Air

Driving Directions:

From Detroit Lakes head N on Cnty 21 to Co Rd 131. Follow to sign.



Listed By:
Counselor Realty Detroit Lakes

Affinity Real Estate Inc. participates in the Regional Multiple Listing Service of Minnesota, Inc Broker Reciprocity (sm) program, allowing us to display other broker's listings on our website. All properties are subject to prior sale, change or withdrawal.



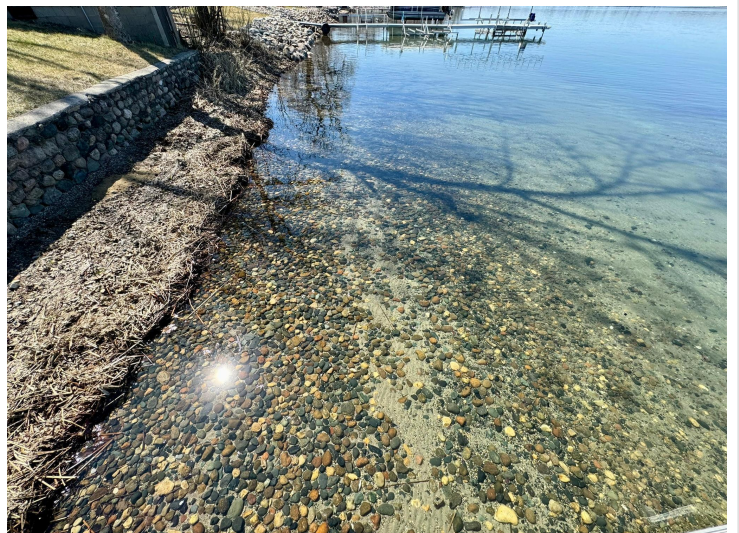
Call Affinity Real Estate

218-237-3333

info@affinityrealestate.com



Affinity Real Estate - 600 Park Avenue South - Park Rapids MN 56470



website: www.AffinityRealEstate.com | email: info@affinityrealestate.com | office: 218-237-3333 | fax:218-237-3377

Affinity
REAL ESTATE INC

\$589,000
MLS 6524372 Lake Home
20306 County Road 131
Detroit Lakes MN 56501



website: www.AffinityRealEstate.com | email: info@affinityrealestate.com | office: 218-237-3333 | fax: 218-237-3377

Affinity
REAL ESTATE INC

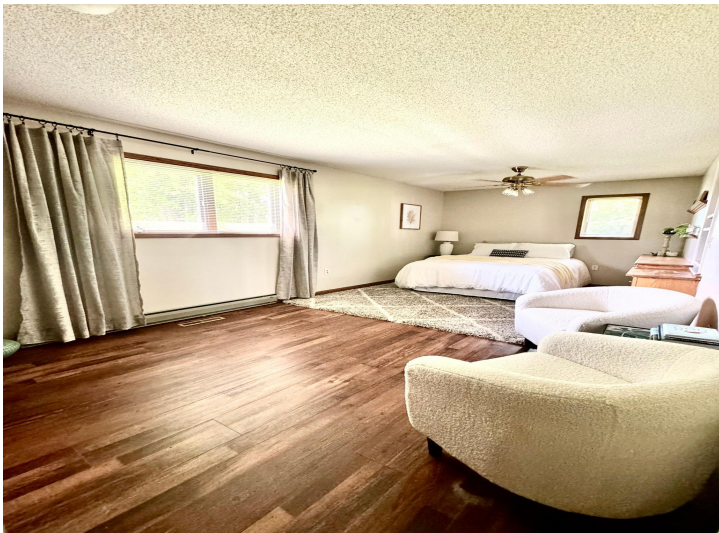
\$589,000
MLS 6524372 Lake Home
20306 County Road 131
Detroit Lakes MN 56501



website: www.AffinityRealEstate.com | email: info@affinityrealestate.com | office: 218-237-3333 | fax:218-237-3377



\$589,000
MLS 6524372 Lake Home
20306 County Road 131
Detroit Lakes MN 56501



website: www.AffinityRealEstate.com | email: info@affinityrealestate.com | office: 218-237-3333 | fax: 218-237-3377

Affinity
REAL ESTATE INC

\$589,000
MLS 6524372 Lake Home
20306 County Road 131
Detroit Lakes MN 56501



website: www.AffinityRealEstate.com | email: info@affinityrealestate.com | office: 218-237-3333 | fax:218-237-3377



\$589,000
MLS 6524372 Lake Home
20306 County Road 131
Detroit Lakes MN 56501



website: www.AffinityRealEstate.com | email: info@affinityrealestate.com | office: 218-237-3333 | fax:218-237-3377



\$589,000
MLS 6524372 Lake Home
20306 County Road 131
Detroit Lakes MN 56501



website: www.AffinityRealEstate.com | email: info@affinityrealestate.com | office: 218-237-3333 | fax:218-237-3377

Affinity
REAL ESTATE INC

\$589,000
MLS 6524372 Lake Home
20306 County Road 131
Detroit Lakes MN 56501



website: www.AffinityRealEstate.com | email: info@affinityrealestate.com | office: 218-237-3333 | fax:218-237-3377



\$589,000
MLS 6524372 Lake Home
20306 County Road 131
Detroit Lakes MN 56501