



MLS 6524381 Residential

**\$395,000**

2,408 sq ft  
4 bedrooms  
3 baths

5084 Whisper Lane  
Bemidji MN 56601

Status: Pending

#### Description:

Welcome to this inviting two-story home with a three-stall garage, featuring four bedrooms and three bathrooms, nestled in a picturesque setting. The property offers upgraded custom closets throughout, enhancing storage efficiency. The landscape is adorned with large, transplanted trees, providing natural beauty and shade. Inside, the home boasts living rooms on both levels, offering flexibility and space for relaxation. Conveniently, there are laundry facilities available on each floor, adding to the practicality of daily living. Step outside onto the covered porch, ideal for enjoying outdoor gatherings or quiet moments. This residence combines comfort, functionality, and natural charm, presenting an excellent opportunity for a family home in a desirable neighborhood.

#### Additional Details:

Year Built	2023
Lot Acres	1.12
Lot Dimensions	290x170
Garage Stalls	3
School District	31
Taxes	\$1,204
Taxes with Assessments	\$1,204
Tax Year	2024

#### Additional Features:

**Basement:** Slab **Fuel:** Electric, Propane **Garage:** 3 **Heat:** Forced Air, Fireplace(s) **Sewer:** Private Sewer, Septic System Compliant - Yes  
**Water:** Submersible - 4 Inch, Drilled, Private **Air Conditioning:** Central Air

#### Driving Directions:

Eckles Rd north to Winding Rd Right to Whisper Ln right and property will be on the left



Listed By:  
Andy Williams Realty Group, LLC

Affinity Real Estate Inc. participates in the Regional Multiple Listing Service of Minnesota, Inc Broker Reciprocity (sm) program, allowing us to display other broker's listings on our website. All properties are subject to prior sale, change or withdrawal.



Call Affinity Real Estate

**218-237-3333**

[info@affinityrealestate.com](mailto:info@affinityrealestate.com)



Affinity Real Estate - 600 Park Avenue South - Park Rapids MN 56470





**Master Bedroom**



**Master bath**



website: [www.AffinityRealEstate.com](http://www.AffinityRealEstate.com) | email: [info@affinityrealestate.com](mailto:info@affinityrealestate.com) | office: 218-237-3333 | fax: 218-237-3377



**\$395,000**  
 MLS 6524381 Residential  
 5084 Whisper Lane  
 Bemidji MN 56601





Master closet



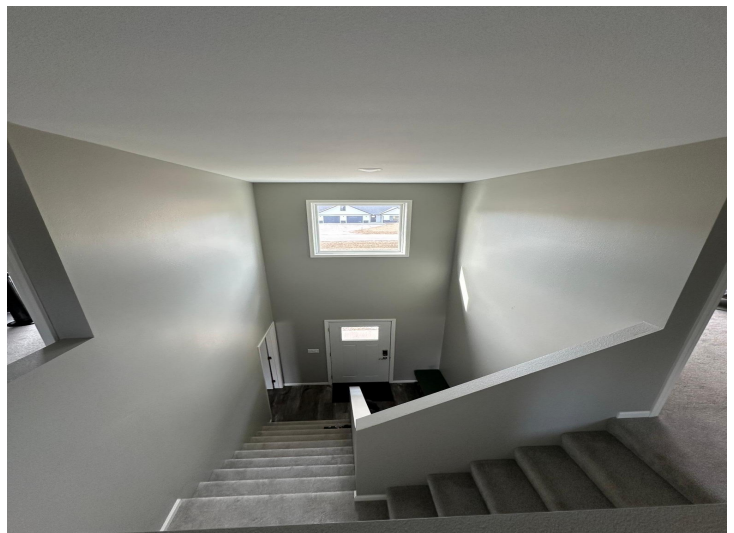
Master closet



Master closet



Downstairs 1/2 bath



website: [www.AffinityRealEstate.com](http://www.AffinityRealEstate.com) | email: [info@affinityrealestate.com](mailto:info@affinityrealestate.com) | office: 218-237-3333 | fax: 218-237-3377



**\$395,000**

MLS 6524381 Residential  
5084 Whisper Lane  
Bemidji MN 56601





Upstairs bathroom



Upstairs second living



Upstairs BR 3



Upstairs BR 3



website: [www.AffinityRealEstate.com](http://www.AffinityRealEstate.com) | email: [info@affinityrealestate.com](mailto:info@affinityrealestate.com) | office: 218-237-3333 | fax: 218-237-3377



**\$395,000**  
 MLS 6524381 Residential  
 5084 Whisper Lane  
 Bemidji MN 56601





website: [www.AffinityRealEstate.com](http://www.AffinityRealEstate.com) | email: [info@affinityrealestate.com](mailto:info@affinityrealestate.com) | office: 218-237-3333 | fax: 218-237-3377



**\$395,000**  
MLS 6524381 Residential  
5084 Whisper Lane  
Bemidji MN 56601