



MLS 6524895 Residential

\$328,000

1,344 sq ft
2 bedrooms
2 baths

63351 County Highway 68
Wadena MN 56482

Status: Active

Description:

So many possibilities on this 40 acre farmstead with multiple outbuildings. Two bedroom manufactured home with full basement and an addition for more living space and bonus rooms. If you are dreaming of country living here is your chance! Pole building (approx length 176'), newer red barn approx 46' x 64', second barn. 30 additional acres available.

Additional Details:

Year Built	2017
Lot Acres	40
Lot Dimensions	irr
School District	820
Taxes	\$1,198
Taxes with Assessments	\$1,374
Tax Year	2023

Additional Features:

Fuel: Wood **Heat:** Wood Stove

Driving Directions:

If using apple maps, type in "63351 CR-68"

From DL: Hwy 10 E to Co 76, then a left to Co 75, in five miles take a right to CR 68, property 0.2 miles up on left.

From Wadena: 15 min drive. Take Hwy 10 W to CR-75, in 8 miles take right to CR-68, destination in 0.2 miles on left.



Listed By:
RE/MAX LAKES REGION

Affinity Real Estate Inc. participates in the Regional Multiple Listing Service of Minnesota, Inc Broker Reciprocity (sm) program, allowing us to display other broker's listings on our website. All properties are subject to prior sale, change or withdrawal.



Call Affinity Real Estate

218-237-3333

info@affinityrealestate.com



Affinity Real Estate - 600 Park Avenue South - Park Rapids MN 56470



website: www.AffinityRealEstate.com | email: info@affinityrealestate.com | office: 218-237-3333 | fax:218-237-3377



\$328,000
MLS 6524895 Residential
63351 County Highway 68
Wadena MN 56482



website: www.AffinityRealEstate.com | email: info@affinityrealestate.com | office: 218-237-3333 | fax:218-237-3377



\$328,000
MLS 6524895 Residential
63351 County Highway 68
Wadena MN 56482



website: www.AffinityRealEstate.com | email: info@affinityrealestate.com | office: 218-237-3333 | fax:218-237-3377

Affinity
REAL ESTATE INC

\$328,000
MLS 6524895 Residential
63351 County Highway 68
Wadena MN 56482



P2.2 55:1/24 ISO:1023 EV:0 H:20.5m D:73.5m H5:0m/s D5:0m/s GPS:(-95.189548,46.572960) ZOOM:1.0X



website: www.AffinityRealEstate.com | email: info@affinityrealestate.com | office: 218-237-3333 | fax:218-237-3377



\$328,000
MLS 6524895 Residential
63351 County Highway 68
Wadena MN 56482



website: www.AffinityRealEstate.com | email: info@affinityrealestate.com | office: 218-237-3333 | fax:218-237-3377

Affinity
REAL ESTATE INC

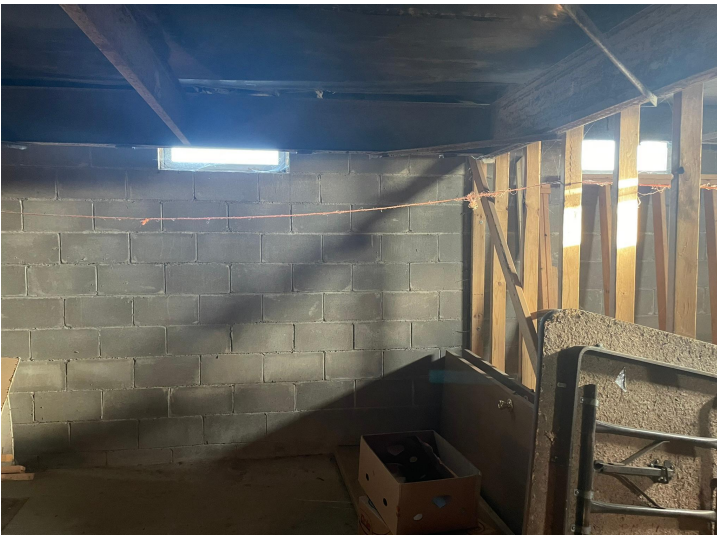
\$328,000
MLS 6524895 Residential
63351 County Highway 68
Wadena MN 56482



website: www.AffinityRealEstate.com | email: info@affinityrealestate.com | office: 218-237-3333 | fax:218-237-3377

Affinity
REAL ESTATE INC

\$328,000
MLS 6524895 Residential
63351 County Highway 68
Wadena MN 56482



website: www.AffinityRealEstate.com | email: info@affinityrealestate.com | office: 218-237-3333 | fax:218-237-3377



\$328,000
MLS 6524895 Residential
63351 County Highway 68
Wadena MN 56482