



MLS 6525584 Residential

**\$275,000**

1,984 sq ft  
3 bedrooms  
2 baths

821 US Hwy 71 N  
Sebeka MN 56477

Status: Active

#### Description:

Welcome to your slice of serenity on this 2.14 wooded acres! This charming 3 bedroom, 2 bath home boasts recently updated maple kitchen cabinets with sleek countertops complemented by all new flooring throughout. Enjoy abundant natural light streaming through the new windows, offering great views of the back yard and wooded oasis. This home has timeless charm accompanied by updated features. There is a walk out basement that could be turned into a rental or accessory living space, has a bedroom with egress, a partial bath and a sauna. There is a 2 stall attached, finished garage, two storage sheds for yard equipment, and a fully tarred drive. The yard is full of mature trees, a fire pit, raised garden and storage sheds. Seller is putting in a new septic system and the well was updated in the last few years. All tucked in the trees but still with access to a highway, so no dusty dirt roads. Make this peaceful space yours today!

#### Additional Details:

Year Built	1972
Lot Acres	2.14
Lot Dimensions	2.14
Garage Stalls	2
School District	820
Taxes	\$2,052
Taxes with Assessments	(unreported)
Tax Year	2024

#### Additional Features:

**Basement:** Block, Partially Finished, Walkout **Fuel:** Natural Gas **Garage:** 2 **Heat:** Forced Air **Sewer:** Private Sewer **Water:** Well **Air Conditioning:** Central Air

#### Driving Directions:

North of Sebeka on hwy 71



Listed By:  
Centennial Realty

Affinity Real Estate Inc. participates in the Regional Multiple Listing Service of Minnesota, Inc Broker Reciprocity (sm) program, allowing us to display other broker's listings on our website. All properties are subject to prior sale, change or withdrawal.



Call Affinity Real Estate

**218-237-3333**

[info@affinityrealestate.com](mailto:info@affinityrealestate.com)



Affinity Real Estate - 600 Park Avenue South - Park Rapids MN 56470





website: [www.AffinityRealEstate.com](http://www.AffinityRealEstate.com) | email: [info@affinityrealestate.com](mailto:info@affinityrealestate.com) | office: 218-237-3333 | fax: 218-237-3377



**\$275,000**

MLS 6525584 Residential  
821 US Hwy 71 N  
Sebeka MN 56477





website: [www.AffinityRealEstate.com](http://www.AffinityRealEstate.com) | email: [info@affinityrealestate.com](mailto:info@affinityrealestate.com) | office: 218-237-3333 | fax: 218-237-3377



**\$275,000**  
 MLS 6525584 Residential  
 821 US Hwy 71 N  
 Sebeka MN 56477





website: [www.AffinityRealEstate.com](http://www.AffinityRealEstate.com) | email: [info@affinityrealestate.com](mailto:info@affinityrealestate.com) | office: 218-237-3333 | fax: 218-237-3377

**Affinity**  
REAL ESTATE INC

**\$275,000**  
MLS 6525584 Residential  
821 US Hwy 71 N  
Sebeka MN 56477





website: [www.AffinityRealEstate.com](http://www.AffinityRealEstate.com) | email: [info@affinityrealestate.com](mailto:info@affinityrealestate.com) | office: 218-237-3333 | fax: 218-237-3377



**\$275,000**  
MLS 6525584 Residential  
821 US Hwy 71 N  
Sebeka MN 56477



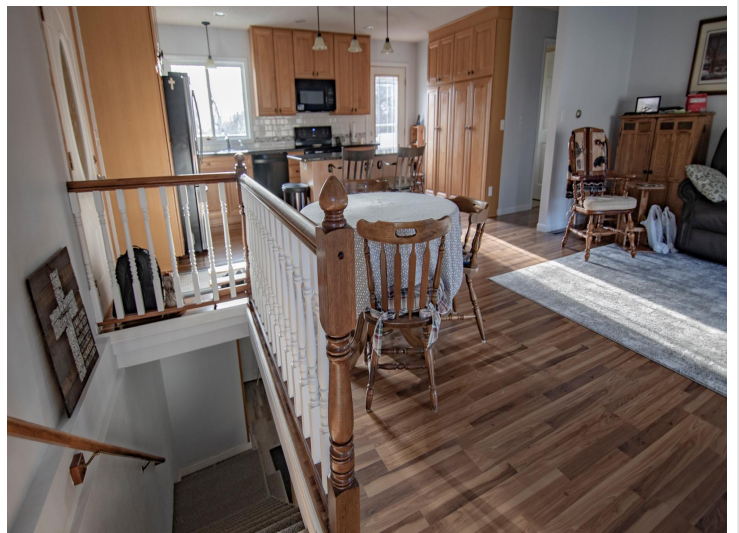
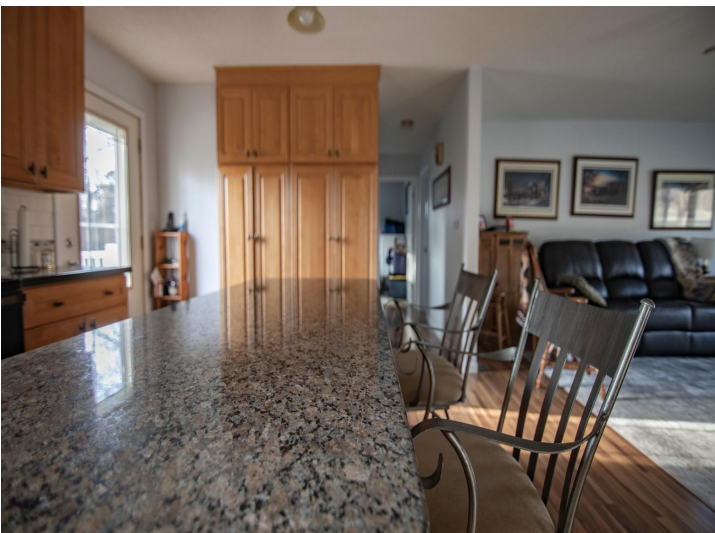


website: [www.AffinityRealEstate.com](http://www.AffinityRealEstate.com) | email: [info@affinityrealestate.com](mailto:info@affinityrealestate.com) | office: 218-237-3333 | fax: 218-237-3377

**Affinity**  
REAL ESTATE INC

**\$275,000**  
MLS 6525584 Residential  
821 US Hwy 71 N  
Sebeka MN 56477





website: [www.AffinityRealEstate.com](http://www.AffinityRealEstate.com) | email: [info@affinityrealestate.com](mailto:info@affinityrealestate.com) | office: 218-237-3333 | fax: 218-237-3377

**Affinity**  
REAL ESTATE INC

**\$275,000**  
MLS 6525584 Residential  
821 US Hwy 71 N  
Sebeka MN 56477





website: [www.AffinityRealEstate.com](http://www.AffinityRealEstate.com) | email: [info@affinityrealestate.com](mailto:info@affinityrealestate.com) | office: 218-237-3333 | fax: 218-237-3377

**Affinity**  
REAL ESTATE INC

**\$275,000**  
MLS 6525584 Residential  
821 US Hwy 71 N  
Sebeka MN 56477





website: [www.AffinityRealEstate.com](http://www.AffinityRealEstate.com) | email: [info@affinityrealestate.com](mailto:info@affinityrealestate.com) | office: 218-237-3333 | fax: 218-237-3377

**Affinity**  
REAL ESTATE INC

**\$275,000**  
MLS 6525584 Residential  
821 US Hwy 71 N  
Sebeka MN 56477





website: [www.AffinityRealEstate.com](http://www.AffinityRealEstate.com) | email: [info@affinityrealestate.com](mailto:info@affinityrealestate.com) | office: 218-237-3333 | fax: 218-237-3377

**Affinity**  
REAL ESTATE INC

**\$275,000**  
MLS 6525584 Residential  
821 US Hwy 71 N  
Sebeka MN 56477





website: [www.AffinityRealEstate.com](http://www.AffinityRealEstate.com) | email: [info@affinityrealestate.com](mailto:info@affinityrealestate.com) | office: 218-237-3333 | fax: 218-237-3377

**Affinity**  
REAL ESTATE INC

**\$275,000**  
MLS 6525584 Residential  
821 US Hwy 71 N  
Sebeka MN 56477





website: [www.AffinityRealEstate.com](http://www.AffinityRealEstate.com) | email: [info@affinityrealestate.com](mailto:info@affinityrealestate.com) | office: 218-237-3333 | fax: 218-237-3377

**Affinity**  
REAL ESTATE INC

**\$275,000**  
MLS 6525584 Residential  
821 US Hwy 71 N  
Sebeka MN 56477





website: [www.AffinityRealEstate.com](http://www.AffinityRealEstate.com) | email: [info@affinityrealestate.com](mailto:info@affinityrealestate.com) | office: 218-237-3333 | fax: 218-237-3377



**\$275,000**  
MLS 6525584 Residential  
821 US Hwy 71 N  
Sebeka MN 56477