



MLS 6525693 Lake Home

\$489,500

3,377 sq ft
4 bedrooms
3 baths

2075 White Pine Point Trail
Pine River MN 56474

Waterfront: Norway

Status: Pending

Description:

Norway Brook - A full moon backlights the brook for a choir ensemble of swans, geese and loons. The chorus lifts from the water's surface fronting this sprawling cedar attired lake home. The home features 3 oversized BR's including the ensuite. There are 2 additional baths with one including an unexpected sauna. The LR includes a gas FP overlooking a fenced in paved stone patio. There is an attached insulated double garage with a finished epoxy floor and a detached double garage on the lakeside. The lot is pine studded with gentle elevation to 107' of shoreline. A permanent dock, paved and concrete drives, city sewer and black top access complements this unique offering. Boating access to Norway Lake and the city dock are additional amenities.

Additional Details:

Year Built	1999
Lot Acres	0.57
Lot Dimensions	107x272x100x219
Garage Stalls	5
School District	2174
Taxes	\$1,676
Taxes with Assessments	\$1,742
Tax Year	2024

Additional Features:

Fuel: Natural Gas **Heat:** Forced Air, Fireplace(s)

Driving Directions:

IN PINE RIVER FROM 371 E. ON BARCLAY, CROSS DAM THEN LEFT AT STOP SIGN, GO 1/4 MILE N. ALONG RIVER THEN LEFT ON WHITE PINE POINT RD., THEN N. TO WHITE PINE POINT TRAIL SW, TURN LEFT TO #2075 ON LEFT.



Listed By:
Heartland Real Estate

Affinity Real Estate Inc. participates in the Regional Multiple Listing Service of Minnesota, Inc Broker Reciprocity (sm) program, allowing us to display other broker's listings on our website. All properties are subject to prior sale, change or withdrawal.



Call Affinity Real Estate

218-237-3333

info@affinityrealestate.com



Affinity Real Estate - 600 Park Avenue South - Park Rapids MN 56470



website: www.AffinityRealEstate.com | email: info@affinityrealestate.com | office: 218-237-3333 | fax: 218-237-3377



\$489,500

MLS 6525693 Lake Home
2075 White Pine Point Trail
Pine River MN 56474



website: www.AffinityRealEstate.com | email: info@affinityrealestate.com | office: 218-237-3333 | fax: 218-237-3377



\$489,500
MLS 6525693 Lake Home
2075 White Pine Point Trail
Pine River MN 56474



website: www.AffinityRealEstate.com | email: info@affinityrealestate.com | office: 218-237-3333 | fax: 218-237-3377



\$489,500
MLS 6525693 Lake Home
2075 White Pine Point Trail
Pine River MN 56474



website: www.AffinityRealEstate.com | email: info@affinityrealestate.com | office: 218-237-3333 | fax: 218-237-3377



\$489,500
 MLS 6525693 Lake Home
 2075 White Pine Point Trail
 Pine River MN 56474



website: www.AffinityRealEstate.com | email: info@affinityrealestate.com | office: 218-237-3333 | fax: 218-237-3377



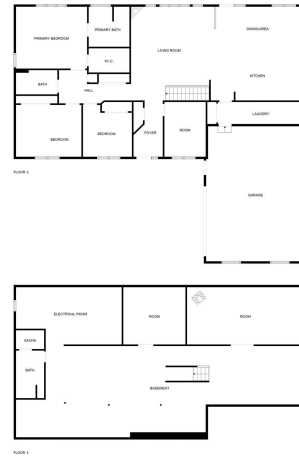
\$489,500
 MLS 6525693 Lake Home
 2075 White Pine Point Trail
 Pine River MN 56474



website: www.AffinityRealEstate.com | email: info@affinityrealestate.com | office: 218-237-3333 | fax: 218-237-3377



\$489,500
 MLS 6525693 Lake Home
 2075 White Pine Point Trail
 Pine River MN 56474



MEASUREMENTS ARE CALCULATED BY CURBICASA TECHNOLOGY, DEEMED HIGHLY RELIABLE BUT NOT GUARANTEED.

website: www.AffinityRealEstate.com | email: info@affinityrealestate.com | office: 218-237-3333 | fax: 218-237-3377



\$489,500
 MLS 6525693 Lake Home
 2075 White Pine Point Trail
 Pine River MN 56474