



MLS 6525942 Residential

\$311,800

1,632 sq ft
3 bedrooms
2 baths

7247 Birchmont Court
Bemidji MN 56601

Status: Pending

Description:

Welcome to your cozy oasis at 7247 Birchmont Ct! Nestled in a tranquil neighborhood, this charming 3-bedroom, 2-bathroom home has delightful features and ample space for comfortable living.

As you step inside, you're greeted by a warm ambiance and inviting layout. The newer furnace ensures your comfort year-round, and newer washer/dryer and fridge to add convenience to your daily routine.

One of the highlights of this property is the fenced-in backyard, providing privacy and plenty of space for outdoor activities. Plus, with large trees casting cooling shade on hot summer days, you'll find endless opportunities to bask in nature's beauty.

Other features of this home include an attached garage, complete with an attached shop area, providing ample storage and workspace for projects of all kinds.

Don't miss out on the opportunity to call this quaint retreat yours. Showings start April 29th.

Additional Details:

Year Built	1959
Lot Acres	0.61
Lot Dimensions	135x202x135x197
Garage Stalls	2
School District	31
Taxes	\$3,116
Taxes with Assessments	\$3,116
Tax Year	2024

Additional Features:

Basement: Crawl Space **Fuel:** Natural Gas **Garage:** 2 **Heat:** Baseboard, Forced Air **Sewer:** Private Sewer **Water:** Well **Air Conditioning:** Central Air



Listed By:
Coldwell Banker Crown Realtors

Affinity Real Estate Inc. participates in the Regional Multiple Listing Service of Minnesota, Inc Broker Reciprocity (sm) program, allowing us to display other broker's listings on our website. All properties are subject to prior sale, change or withdrawal.



Call Affinity Real Estate

218-237-3333

info@affinityrealestate.com



Affinity Real Estate - 600 Park Avenue South - Park Rapids MN 56470



website: www.AffinityRealEstate.com | email: info@affinityrealestate.com | office: 218-237-3333 | fax: 218-237-3377

Affinity
REAL ESTATE INC

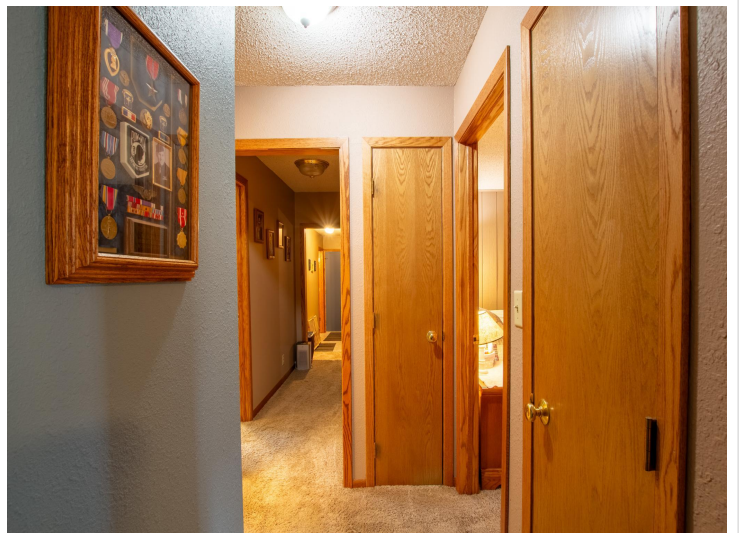
\$311,800
MLS 6525942 Residential
7247 Birchmont Court
Bemidji MN 56601



website: www.AffinityRealEstate.com | email: info@affinityrealestate.com | office: 218-237-3333 | fax: 218-237-3377

Affinity
REAL ESTATE INC

\$311,800
MLS 6525942 Residential
7247 Birchmont Court
Bemidji MN 56601



website: www.AffinityRealEstate.com | email: info@affinityrealestate.com | office: 218-237-3333 | fax: 218-237-3377

Affinity
REAL ESTATE INC

\$311,800
MLS 6525942 Residential
7247 Birchmont Court
Bemidji MN 56601



website: www.AffinityRealEstate.com | email: info@affinityrealestate.com | office: 218-237-3333 | fax: 218-237-3377

Affinity
REAL ESTATE INC

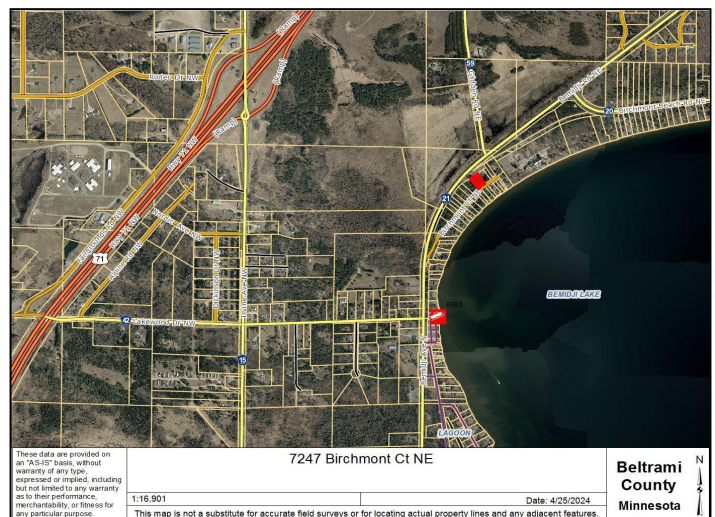
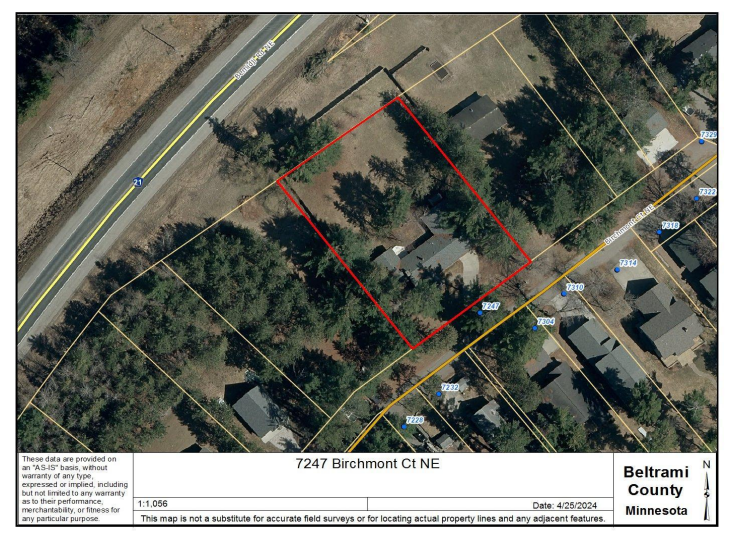
\$311,800
MLS 6525942 Residential
7247 Birchmont Court
Bemidji MN 56601



website: www.AffinityRealEstate.com | email: info@affinityrealestate.com | office: 218-237-3333 | fax: 218-237-3377



\$311,800
 MLS 6525942 Residential
 7247 Birchmont Court
 Bemidji MN 56601



website: www.AffinityRealEstate.com | email: info@affinityrealestate.com | office: 218-237-3333 | fax: 218-237-3377



\$311,800
 MLS 6525942 Residential
 7247 Birchmont Court
 Bemidji MN 56601