



MLS 6526807 Lake Home

\$449,000

2,342 sq ft
3 bedrooms
3 baths

8321 Timber Lane
Nisswa MN 56468

Waterfront: Gull

Status: Active

Description:

Beautiful home, main-level living, fabulous location and deeded access to Gull Lake! Open floor plan on the main level, with laundry room, half bath, primary bedroom with private full bathroom, great natural light and access to the deck. The walk-out basement features new carpet throughout, a gas burning stone fireplace, two bedrooms and a full bathroom. Heading outside, you'll enjoy the view from the deck, yard, wildlife and fenced garden. Extra storage available in the 24x32 garage with 12' doors. It's a short distance to the day use only dock (no overnight docking) on Gull Lake. Minutes to great dining and entertainment on or off the lake! You definitely want to see this one!

Additional Details:

Year Built	1994
Lot Acres	2.35
Lot Dimensions	217x552x151x568
Garage Stalls	4
School District	181
Taxes	\$2,802
Taxes with Assessments	\$2,868
Tax Year	2024

Additional Features:

Basement: Finished, Walkout **Fuel:** Natural Gas **Garage:** 4 **Heat:** Forced Air **Sewer:** Tank with Drainage Field **Water:** Private, Well **Air Conditioning:** Central Air

Driving Directions:

Heading N on 371, turn left on County Rd 77 in Nisswa (Stoplights by Wendy's) Left on Gullwood Rd, right on Timber Lane to home on the right



Listed By:
Realty Group LLC

Affinity Real Estate Inc. participates in the Regional Multiple Listing Service of Minnesota, Inc Broker Reciprocity (sm) program, allowing us to display other broker's listings on our website. All properties are subject to prior sale, change or withdrawal.



Call Affinity Real Estate

218-237-3333

info@affinityrealestate.com



Affinity Real Estate - 600 Park Avenue South - Park Rapids MN 56470



website: www.AffinityRealEstate.com | email: info@affinityrealestate.com | office: 218-237-3333 | fax:218-237-3377

Affinity
REAL ESTATE INC

\$449,000
MLS 6526807 Lake Home
8321 Timber Lane
Nisswa MN 56468



website: www.AffinityRealEstate.com | email: info@affinityrealestate.com | office: 218-237-3333 | fax:218-237-3377

Affinity
REAL ESTATE INC

\$449,000
MLS 6526807 Lake Home
8321 Timber Lane
Nisswa MN 56468



website: www.AffinityRealEstate.com | email: info@affinityrealestate.com | office: 218-237-3333 | fax:218-237-3377



\$449,000
MLS 6526807 Lake Home
8321 Timber Lane
Nisswa MN 56468



website: www.AffinityRealEstate.com | email: info@affinityrealestate.com | office: 218-237-3333 | fax:218-237-3377

Affinity
REAL ESTATE INC

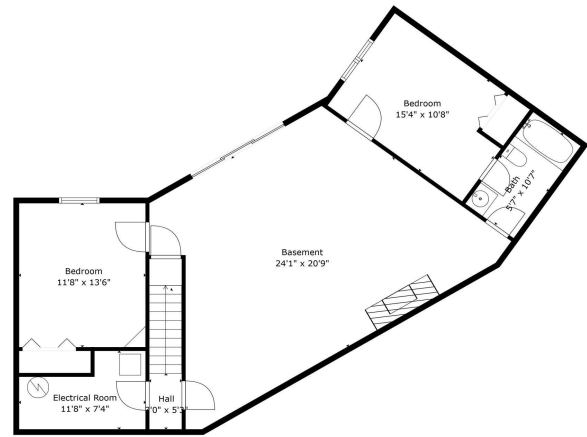
\$449,000
MLS 6526807 Lake Home
8321 Timber Lane
Nisswa MN 56468



website: www.AffinityRealEstate.com | email: info@affinityrealestate.com | office: 218-237-3333 | fax:218-237-3377



\$449,000
MLS 6526807 Lake Home
8321 Timber Lane
Nisswa MN 56468



TOTAL: 2135 sq. ft.
 Below Ground: 1008 sq. ft., FLOOR 2: 1127 sq. ft.
 EXCLUDED AREAS: ELECTRICAL ROOM: 69 sq. ft., GARAGE: 633 sq. ft.
 Measurements Are Estimated And Are Not A Replacement For a Licensed Surveyor.



TOTAL: 2135 sq. ft.
 Below Ground: 1008 sq. ft., FLOOR 2: 1127 sq. ft.
 EXCLUDED AREAS: ELECTRICAL ROOM: 69 sq. ft., GARAGE: 633 sq. ft.
 Measurements Are Estimated And Are Not A Replacement For a Licensed Surveyor.



website: www.AffinityRealEstate.com | email: info@affinityrealestate.com | office: 218-237-3333 | fax: 218-237-3377



\$449,000
 MLS 6526807 Lake Home
 8321 Timber Lane
 Nisswa MN 56468



FLOOR 1



website: www.AffinityRealEstate.com | email: info@affinityrealestate.com | office: 218-237-3333 | fax:218-237-3377



\$449,000
MLS 6526807 Lake Home
8321 Timber Lane
Nisswa MN 56468