



MLS 6527084 Residential

\$560,000

6,200 sq ft
7 bedrooms
6 baths

48544 County Highway 19
Sebeka MN 56477

Status: Pending



Description:

Welcome to the perfect country home with endless features, this home is over 6200 square feet 7 bedrooms 6 bathrooms, 3 kitchen, 5 living rooms, (2 mother in law suits) 2 laundry rooms , attached oversize 2 car garage, detached 2 car garage converted into SHOP, plus 2 additional outbuildings and that's just the beginning , this home is nestled into 43 beautiful acres with every type of MN wildlife, bear, trophy deer, turkey. The owners took great care in building this home, incredible structural features, tall ceilings, indoor balcony, multi staircases, beautiful view from every window, plus a master bedroom that has its own private exterior deck. The utilities were so well planned with Geothermal heat and air conditioning, you won't believe the cost to cool this property in the summer. It's almost ZERO. in addition, the basement and attached garage have infloor heat, the yard has a sprinkler system. There are hidden gems all throughout the property, don't miss the entry way closet.

Additional Details:

Year Built	2010
Lot Acres	43.1
Lot Dimensions	1,877,436
Garage Stalls	5
School District	820
Taxes	\$4,342
Taxes with Assessments	\$4,342
Tax Year	2022

Additional Features:

Basement: Finished **Fuel:** Other **Garage:** 5 **Heat:** Geothermal **Sewer:** Tank with Drainage Field **Water:** Drilled **Air Conditioning:** Geothermal

Driving Directions:

Just off the main Rd



Listed By:
Keller Williams Integrity NW

Affinity Real Estate Inc. participates in the Regional Multiple Listing Service of Minnesota, Inc Broker Reciprocity (sm) program, allowing us to display other broker's listings on our website. All properties are subject to prior sale, change or withdrawal.



Call Affinity Real Estate

218-237-3333

info@affinityrealestate.com



Affinity Real Estate - 600 Park Avenue South - Park Rapids MN 56470



website: www.AffinityRealEstate.com | email: info@affinityrealestate.com | office: 218-237-3333 | fax:218-237-3377



\$560,000
MLS 6527084 Residential
48544 County Highway 19
Sebeka MN 56477



website: www.AffinityRealEstate.com | email: info@affinityrealestate.com | office: 218-237-3333 | fax:218-237-3377



\$560,000
MLS 6527084 Residential
48544 County Highway 19
Sebeka MN 56477



website: www.AffinityRealEstate.com | email: info@affinityrealestate.com | office: 218-237-3333 | fax:218-237-3377

Affinity
REAL ESTATE INC

\$560,000
MLS 6527084 Residential
48544 County Highway 19
Sebeka MN 56477



website: www.AffinityRealEstate.com | email: info@affinityrealestate.com | office: 218-237-3333 | fax:218-237-3377



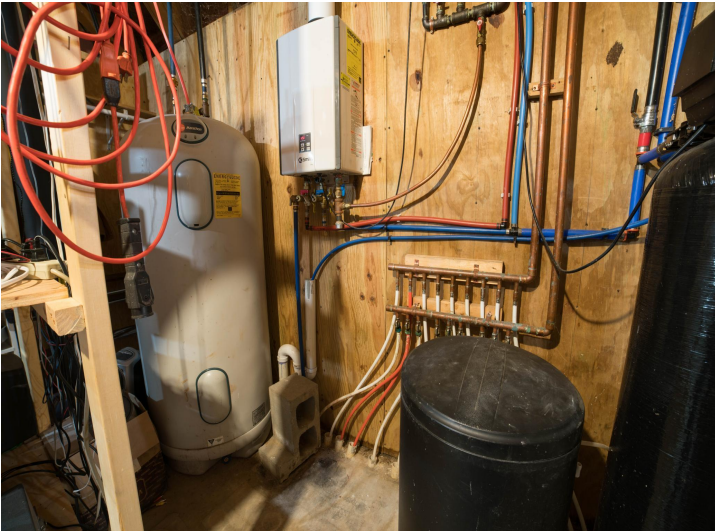
\$560,000
MLS 6527084 Residential
48544 County Highway 19
Sebeka MN 56477



website: www.AffinityRealEstate.com | email: info@affinityrealestate.com | office: 218-237-3333 | fax:218-237-3377

Affinity
REAL ESTATE INC

\$560,000
MLS 6527084 Residential
48544 County Highway 19
Sebeka MN 56477



website: www.AffinityRealEstate.com | email: info@affinityrealestate.com | office: 218-237-3333 | fax:218-237-3377



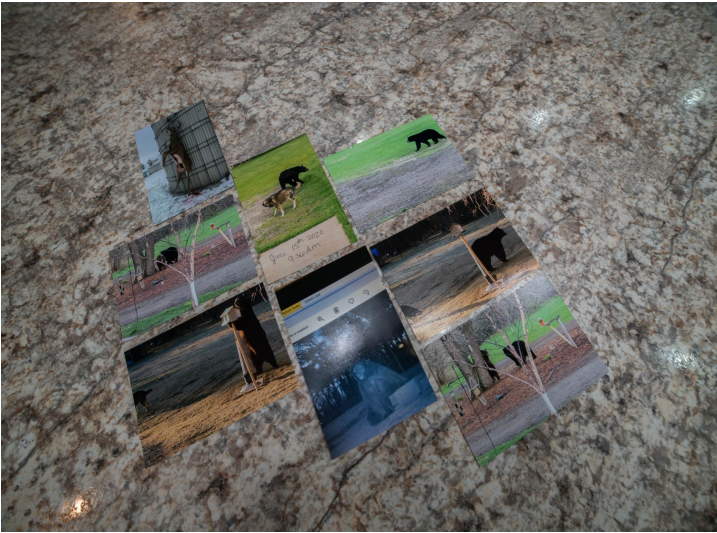
\$560,000
MLS 6527084 Residential
48544 County Highway 19
Sebeka MN 56477



website: www.AffinityRealEstate.com | email: info@affinityrealestate.com | office: 218-237-3333 | fax:218-237-3377



\$560,000
MLS 6527084 Residential
48544 County Highway 19
Sebeka MN 56477



website: www.AffinityRealEstate.com | email: info@affinityrealestate.com | office: 218-237-3333 | fax:218-237-3377



\$560,000
MLS 6527084 Residential
48544 County Highway 19
Sebeka MN 56477



website: www.AffinityRealEstate.com | email: info@affinityrealestate.com | office: 218-237-3333 | fax:218-237-3377



\$560,000
MLS 6527084 Residential
48544 County Highway 19
Sebeka MN 56477