



MLS 6527115 Land

\$59,900

2.5 Acres
Finished Lot(s)

TBD Tract A Carlson Drive
Rochert MN 56578

Status: Active

Description:

Tract A is a 2.5 Acre back lot across the road from Pickerel Lake in Becker County and minutes from Detroit Lakes. Survey has been approved and monuments are in the ground. Great spot for a private get-away or for your storage needs. Adjacent to the 321 acre Pickerel Wildlife Management Area.

Additional Details:

Lot Acres	2.5
Lot Dimensions	260x492x248x399
School District	22
Taxes	\$312
Taxes with Assessments	\$312
Tax Year	2023

Additional Features:

Driving Directions:

From Detroit Lakes, take US HWY 34 East to Co Hwy-29, turn left and drive North to Co Hwy 32, turn left and drive West to 330th Ave South, turn left and follow to property on left.



Listed By:
Counselor Realty Detroit Lakes

Affinity Real Estate Inc. participates in the Regional Multiple Listing Service of Minnesota, Inc Broker Reciprocity (sm) program, allowing us to display other broker's listings on our website. All properties are subject to prior sale, change or withdrawal.



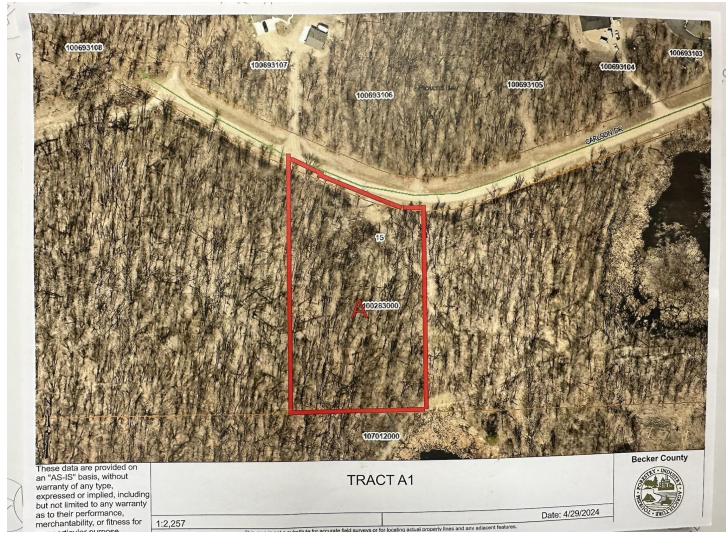
Call Affinity Real Estate

218-237-3333

info@affinityrealestate.com



Affinity Real Estate - 600 Park Avenue South - Park Rapids MN 56470



website: www.AffinityRealEstate.com | email: info@affinityrealestate.com | office: 218-237-3333 | fax:218-237-3377



\$59,900
MLS 6527115 Land
TBD Tract A Carlson Drive
Rochert MN 56578



website: www.AffinityRealEstate.com | email: info@affinityrealestate.com | office: 218-237-3333 | fax:218-237-3377



\$59,900
MLS 6527115 Land
TBD Tract A Carlson Drive
Rochert MN 56578