



MLS 6529857 Residential

\$254,900

1,232 sq ft
3 bedrooms
2 baths

9920 Boneset
Bemidji MN 56601

Status: Pending

Description:

Come home to this New Construction! 3 bedroom 2 bath one level home on a beautiful wooded lot. Open concept living, kitchen, dining. Two stall 24x24 heated garage. This home is located in Aspen Ridge one of the regions newest developments with close proximity to snowmobile trails and state land

Additional Details:

Year Built	2024
Lot Acres	1.37
Lot Dimensions	180x330
Garage Stalls	2
School District	31
Taxes	\$254
Taxes with Assessments	\$254
Tax Year	2023

Additional Features:

Basement: None **Fuel:** Propane **Garage:** 2 **Heat:** Boiler, Radiant Floor **Sewer:** Septic System Compliant - Yes **Water:** Submersible - 4 Inch **Air Conditioning:** Ductless Mini-Split

Driving Directions:

Hwy 2 west to Wilton, turn north on Scribner Rd (Roth RV) 1 mile, left on Boneset, home is on the left.



Listed By:
Grimes Realty

Affinity Real Estate Inc. participates in the Regional Multiple Listing Service of Minnesota, Inc Broker Reciprocity (sm) program, allowing us to display other broker's listings on our website. All properties are subject to prior sale, change or withdrawal.



Call Affinity Real Estate

218-237-3333

info@affinityrealestate.com



Affinity Real Estate - 600 Park Avenue South - Park Rapids MN 56470



website: www.AffinityRealEstate.com | email: info@affinityrealestate.com | office: 218-237-3333 | fax:218-237-3377



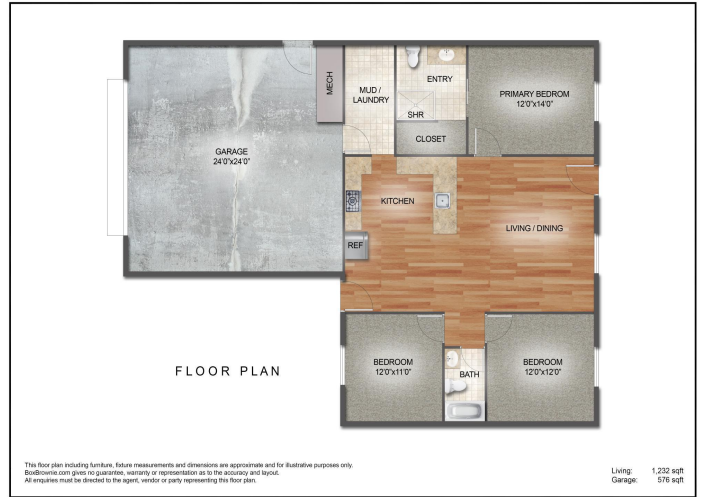
\$254,900
MLS 6529857 Residential
9920 Boneset
Bemidji MN 56601



website: www.AffinityRealEstate.com | email: info@affinityrealestate.com | office: 218-237-3333 | fax: 218-237-3377

Affinity
REAL ESTATE INC

\$254,900
MLS 6529857 Residential
9920 Boneset
Bemidji MN 56601



website: www.AffinityRealEstate.com | email: info@affinityrealestate.com | office: 218-237-3333 | fax: 218-237-3377



\$254,900
MLS 6529857 Residential
9920 Bonaset
Bemidji MN 56601