



MLS 6530215 Lake Home

**\$1,650,000**

3,200 sq ft  
4 bedrooms  
4 baths

33314 Island Lake Trail  
Pequot Lakes MN 56472

Waterfront: Island Lake (Ideal Twp.)

Status: Hold

**Description:**

The feeling you get when you drive down the driveway is that this Island Lake Estate is unlike anything in this area. It has it all...a beautiful home set on acreage with panoramic views, over 700' of shoreline on Island Lake & a number of trails throughout the property along with multiple locations for sitting & relaxing in privacy. This 4 BR, 4 BA home has 3,200 finished SF of living space & many quality appointments including an authentic stone wood-burning FP, extensive windows for expansive views, custom cabinets, hardwood floors & reclaimed wood features. The current design & feel of the home make it perfect for entertaining. Enjoy sunset & lake views from the large deck complete with Ipe decking. A rope swing, lakeside deck, sand beach & a private boat launch complete the lakeside amenities. Plenty of storage with a 3 car attached heated garage along with a 48' x 80' pole building with a 15' x 80' lean-to. Great location close to Pequot Lakes, Breezy Point & Nisswa.

**Additional Details:**

Year Built	2020
Lot Acres	11
Lot Dimensions	661 x 825 x 262 x 163 x 351 x 671
Garage Stalls	3
School District	186
Taxes	\$4,377
Taxes with Assessments	\$4,402
Tax Year	2024

**Additional Features:**

**Fuel:** Propane **Heat:** Boiler, Ductless Mini-Split, Forced Air, Radiant Floor

**Driving Directions:**

From the intersection of Highway 371 and County Road 16, go east on County Road 16, then turn right onto Wild Acres Road. Turn left onto Island Lake Trail. Stay to the left. Property is at the end of the road. There is a pole building on the right as you enter the property.



Listed By:  
Larson Group Real Estate/Kelle

Affinity Real Estate Inc. participates in the Regional Multiple Listing Service of Minnesota, Inc Broker Reciprocity (sm) program, allowing us to display other broker's listings on our website. All properties are subject to prior sale, change or withdrawal.



**Call Affinity Real Estate**

**218-237-3333**

**info@affinityrealestate.com**



**Affinity Real Estate - 600 Park Avenue South - Park Rapids MN 56470**





website: [www.AffinityRealEstate.com](http://www.AffinityRealEstate.com) | email: [info@affinityrealestate.com](mailto:info@affinityrealestate.com) | office: 218-237-3333 | fax:218-237-3377



**\$1,650,000**  
MLS 6530215 Lake Home  
33314 Island Lake Trail  
Pequot Lakes MN 56472





website: [www.AffinityRealEstate.com](http://www.AffinityRealEstate.com) | email: [info@affinityrealestate.com](mailto:info@affinityrealestate.com) | office: 218-237-3333 | fax:218-237-3377



**\$1,650,000**  
MLS 6530215 Lake Home  
33314 Island Lake Trail  
Pequot Lakes MN 56472



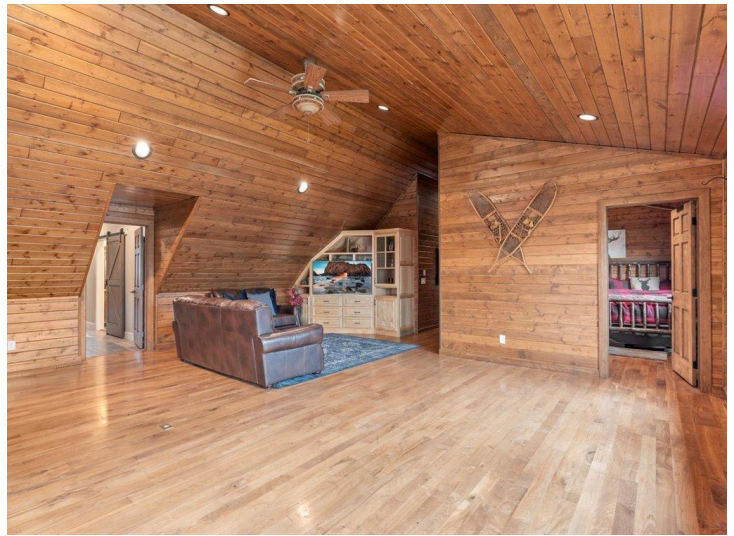


website: [www.AffinityRealEstate.com](http://www.AffinityRealEstate.com) | email: [info@affinityrealestate.com](mailto:info@affinityrealestate.com) | office: 218-237-3333 | fax: 218-237-3377

**Affinity**  
REAL ESTATE INC

**\$1,650,000**  
MLS 6530215 Lake Home  
33314 Island Lake Trail  
Pequot Lakes MN 56472



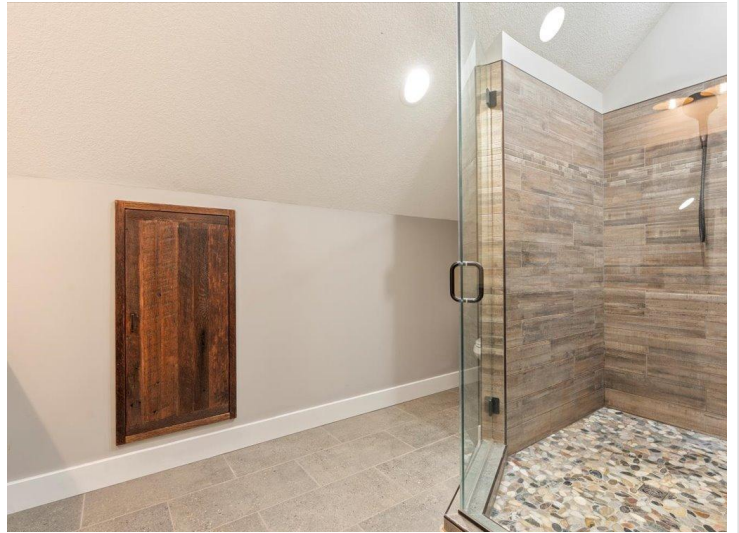


website: [www.AffinityRealEstate.com](http://www.AffinityRealEstate.com) | email: [info@affinityrealestate.com](mailto:info@affinityrealestate.com) | office: 218-237-3333 | fax: 218-237-3377

**Affinity**  
REAL ESTATE INC

**\$1,650,000**  
MLS 6530215 Lake Home  
33314 Island Lake Trail  
Pequot Lakes MN 56472





website: [www.AffinityRealEstate.com](http://www.AffinityRealEstate.com) | email: [info@affinityrealestate.com](mailto:info@affinityrealestate.com) | office: 218-237-3333 | fax:218-237-3377

**Affinity**  
REAL ESTATE INC

**\$1,650,000**  
MLS 6530215 Lake Home  
33314 Island Lake Trail  
Pequot Lakes MN 56472





website: [www.AffinityRealEstate.com](http://www.AffinityRealEstate.com) | email: [info@affinityrealestate.com](mailto:info@affinityrealestate.com) | office: 218-237-3333 | fax:218-237-3377



**\$1,650,000**  
MLS 6530215 Lake Home  
33314 Island Lake Trail  
Pequot Lakes MN 56472





website: [www.AffinityRealEstate.com](http://www.AffinityRealEstate.com) | email: [info@affinityrealestate.com](mailto:info@affinityrealestate.com) | office: 218-237-3333 | fax:218-237-3377

**Affinity**  
REAL ESTATE INC

**\$1,650,000**  
MLS 6530215 Lake Home  
33314 Island Lake Trail  
Pequot Lakes MN 56472





website: [www.AffinityRealEstate.com](http://www.AffinityRealEstate.com) | email: [info@affinityrealestate.com](mailto:info@affinityrealestate.com) | office: 218-237-3333 | fax:218-237-3377



**\$1,650,000**  
MLS 6530215 Lake Home  
33314 Island Lake Trail  
Pequot Lakes MN 56472





website: [www.AffinityRealEstate.com](http://www.AffinityRealEstate.com) | email: [info@affinityrealestate.com](mailto:info@affinityrealestate.com) | office: 218-237-3333 | fax:218-237-3377



**\$1,650,000**  
MLS 6530215 Lake Home  
33314 Island Lake Trail  
Pequot Lakes MN 56472