



MLS 6530479 Land

\$108,900

36.06 Acres
Raw Land

34369 Cr-23
Menahga MN 56464

Status: Active

Description:

This 36-acre prime hunting property, located off a tar road, offers the perfect mix of terrain, including brushy low ground, high ground meadows, and ideal spots for food plots. Take refuge from the elements in the 20x16 hunting shack, wired for a generator, providing somewhere to hang your hat between hunts. You'll also find a tree stand already in place, offering the perfect vantage point for your hunt. With an abundance of deer, bear, turkey, pheasant, and other wildlife thriving in the surrounding area, this parcel is their perfect hideout. No photos needed; come see all the wildlife sign and deer trails in person. Plus, it's conveniently located near thousands of acres of public lands for you to explore, making it ideal to find other prime hunting spots deep in the state lands. Don't miss out on this incredible opportunity! "CALL TO SCHEDULE YOUR SHOWING TODAY!"

Additional Details:

Lot Acres	36.06
Lot Dimensions	1180x1280x1180x1300
School District	821
Taxes	\$546
Taxes with Assessments	\$606
Tax Year	2024

Additional Features:

Driving Directions:

From Hwys. 71/34 in Park Rapids, go South on Hwy 71 to Menahga, hang a left just past Subway on Helsinki Blvd. Follow for 4.5 miles to right on Hubbard Road (Cty Rd 23). Property is 1.2 miles on the right.



Listed By:
Coldwell Banker Crown Realtors

Affinity Real Estate Inc. participates in the Regional Multiple Listing Service of Minnesota, Inc Broker Reciprocity (sm) program, allowing us to display other broker's listings on our website. All properties are subject to prior sale, change or withdrawal.



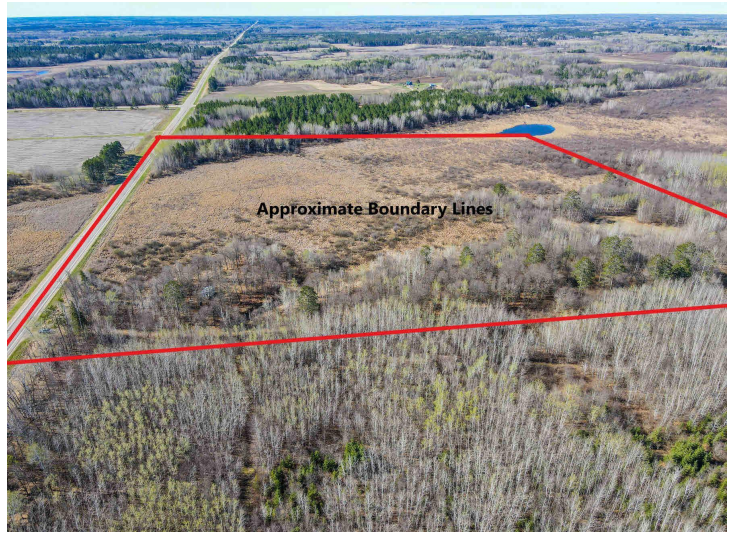
Call Affinity Real Estate

218-237-3333

info@affinityrealestate.com



Affinity Real Estate - 600 Park Avenue South - Park Rapids MN 56470



website: www.AffinityRealEstate.com | email: info@affinityrealestate.com | office: 218-237-3333 | fax:218-237-3377



\$108,900
MLS 6530479 Land
34369 Cr-23
Menahga MN 56464



website: www.AffinityRealEstate.com | email: info@affinityrealestate.com | office: 218-237-3333 | fax: 218-237-3377

Affinity
REAL ESTATE INC

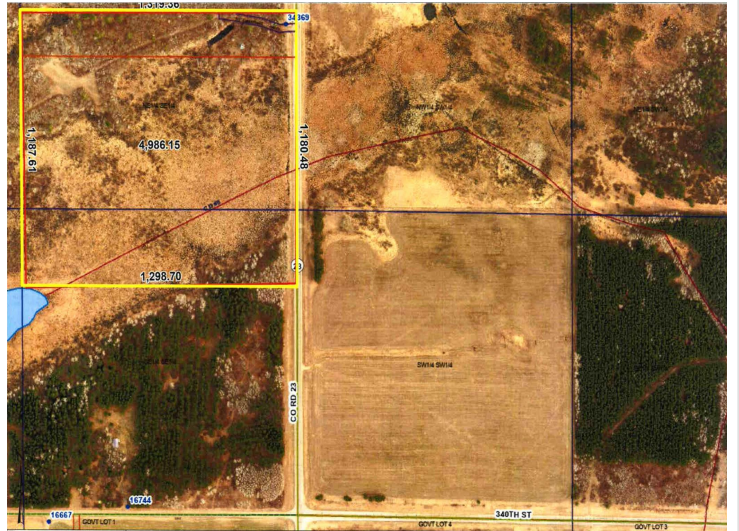
\$108,900
MLS 6530479 Land
34369 Cr-23
Menahga MN 56464



website: www.AffinityRealEstate.com | email: info@affinityrealestate.com | office: 218-237-3333 | fax:218-237-3377



\$108,900
MLS 6530479 Land
34369 Cr-23
Menahga MN 56464



website: www.AffinityRealEstate.com | email: info@affinityrealestate.com | office: 218-237-3333 | fax:218-237-3377



\$108,900
MLS 6530479 Land
34369 Cr-23
Menahga MN 56464