



MLS 6530629 Land

**\$53,000**

3.5 Acres  
Plat Designed

TBD Forbes Lane  
Longville MN 56655

Status: Active

**Description:**

Hard to find wooded, level, 3.5-acre lot within Longville city limits. Perfect for a new home or business. City sewer is available. Lot is mostly wooded with some open areas.

**Additional Details:**

Lot Acres	3.5
Lot Dimensions	irregular
School District	118
Taxes	\$1
Taxes with Assessments	\$1
Tax Year	2024

**Additional Features:**

**Driving Directions:**

From downtown Longville, take 84 south to a left on Co Rd 7 to a left on Forbes Lane (within city limits)



Listed By:  
Bill Hansen Realty/Longville

Affinity Real Estate Inc. participates in the Regional Multiple Listing Service of Minnesota, Inc Broker Reciprocity (sm) program, allowing us to display other broker's listings on our website. All properties are subject to prior sale, change or withdrawal.



Call Affinity Real Estate

**218-237-3333**

[info@affinityrealestate.com](mailto:info@affinityrealestate.com)



Affinity Real Estate - 600 Park Avenue South - Park Rapids MN 56470



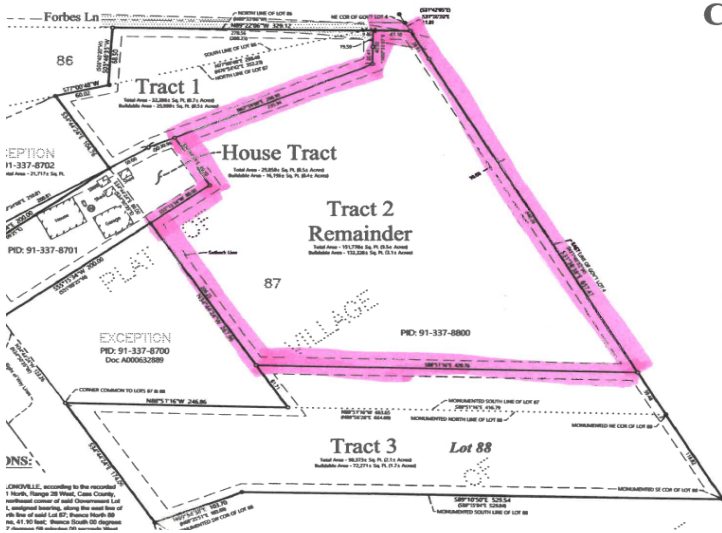
website: [www.AffinityRealEstate.com](http://www.AffinityRealEstate.com) | email: [info@affinityrealestate.com](mailto:info@affinityrealestate.com) | office: 218-237-3333 | fax:218-237-3377



**\$53,000**  
MLS 6530629 Land  
TBD Forbes Lane  
Longville MN 56655



C



website: [www.AffinityRealEstate.com](http://www.AffinityRealEstate.com) | email: [info@affinityrealestate.com](mailto:info@affinityrealestate.com) | office: 218-237-3333 | fax:218-237-3377



**\$53,000**  
 MLS 6530629 Land  
 TBD Forbes Lane  
 Longville MN 56655