



MLS 6530778 Residential

**\$369,900**

2,100 sq ft  
3 bedrooms  
3 baths

241 Swedmark Drive  
Bemidji MN 56601

Status: Pending

**Description:**

If you are looking for a great location, 241 Swedmark DR SW is the spot, just on the outskirts of Bemidji minutes from shopping, schools, and downtown. This beautiful 3 bedroom, 3 bathroom home is tucked away on 1.61 ac. As you enter through the front door the foyer boasts custom painted walls, a ½ bath, and tile floor, where it opens to a raised dining room, flowing into the kitchen and large living room and gas fireplace. Enjoy the privacy around the home with a landscaped yard, deck and fenced back yard.

**Additional Details:**

Year Built	2006
Lot Acres	1.61
Lot Dimensions	280x290x350x170
Garage Stalls	2
School District	31
Taxes	\$3,468
Taxes with Assessments	\$3,468
Tax Year	2024

**Additional Features:**

**Basement:** None **Fuel:** Electric, Propane **Garage:** 2 **Heat:** Baseboard, Dual, Forced Air, Fireplace(s) **Sewer:** Private Sewer, Tank with Drainage Field **Water:** Submersible - 4 Inch, Drilled, Private, Well **Air Conditioning:** Central Air

**Driving Directions:**

From Bemidji West on 5th ST (Division) through 2 roundabouts Left onto Swedmark home is on right



Listed By:  
218 Real Estate

Affinity Real Estate Inc. participates in the Regional Multiple Listing Service of Minnesota, Inc Broker Reciprocity (sm) program, allowing us to display other broker's listings on our website. All properties are subject to prior sale, change or withdrawal.



**Call Affinity Real Estate**

**218-237-3333**

**info@affinityrealestate.com**



**Affinity Real Estate - 600 Park Avenue South - Park Rapids MN 56470**



website: [www.AffinityRealEstate.com](http://www.AffinityRealEstate.com) | email: [info@affinityrealestate.com](mailto:info@affinityrealestate.com) | office: 218-237-3333 | fax: 218-237-3377

**Affinity**  
REAL ESTATE INC

**\$369,900**  
MLS 6530778 Residential  
241 Swedmark Drive  
Bemidji MN 56601



website: [www.AffinityRealEstate.com](http://www.AffinityRealEstate.com) | email: [info@affinityrealestate.com](mailto:info@affinityrealestate.com) | office: 218-237-3333 | fax: 218-237-3377

**Affinity**  
REAL ESTATE INC

**\$369,900**  
MLS 6530778 Residential  
241 Swedmark Drive  
Bemidji MN 56601



website: [www.AffinityRealEstate.com](http://www.AffinityRealEstate.com) | email: [info@affinityrealestate.com](mailto:info@affinityrealestate.com) | office: 218-237-3333 | fax: 218-237-3377

**Affinity**  
REAL ESTATE INC

**\$369,900**  
MLS 6530778 Residential  
241 Swedmark Drive  
Bemidji MN 56601



website: [www.AffinityRealEstate.com](http://www.AffinityRealEstate.com) | email: [info@affinityrealestate.com](mailto:info@affinityrealestate.com) | office: 218-237-3333 | fax: 218-237-3377

**Affinity**  
REAL ESTATE INC

**\$369,900**  
MLS 6530778 Residential  
241 Swedmark Drive  
Bemidji MN 56601



website: [www.AffinityRealEstate.com](http://www.AffinityRealEstate.com) | email: [info@affinityrealestate.com](mailto:info@affinityrealestate.com) | office: 218-237-3333 | fax: 218-237-3377

**Affinity**  
REAL ESTATE INC

**\$369,900**  
MLS 6530778 Residential  
241 Swedmark Drive  
Bemidji MN 56601



website: [www.AffinityRealEstate.com](http://www.AffinityRealEstate.com) | email: [info@affinityrealestate.com](mailto:info@affinityrealestate.com) | office: 218-237-3333 | fax: 218-237-3377

**Affinity**  
REAL ESTATE INC

**\$369,900**  
MLS 6530778 Residential  
241 Swedmark Drive  
Bemidji MN 56601



website: [www.AffinityRealEstate.com](http://www.AffinityRealEstate.com) | email: [info@affinityrealestate.com](mailto:info@affinityrealestate.com) | office: 218-237-3333 | fax: 218-237-3377



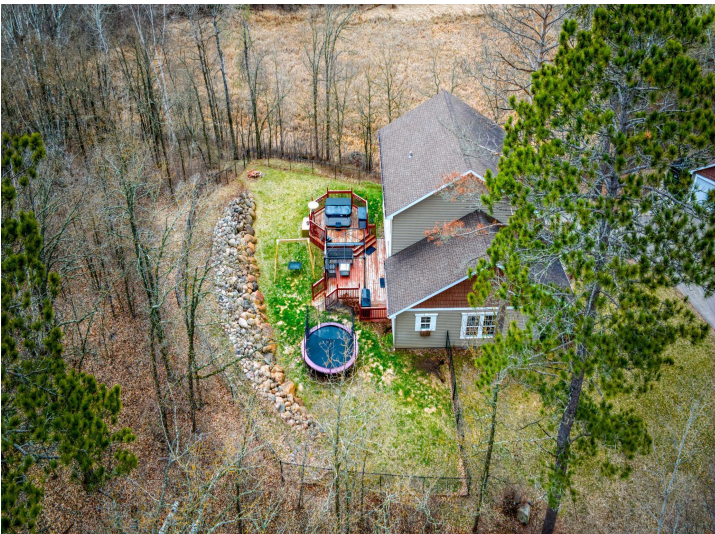
**\$369,900**  
 MLS 6530778 Residential  
 241 Swedmark Drive  
 Bemidji MN 56601



website: [www.AffinityRealEstate.com](http://www.AffinityRealEstate.com) | email: [info@affinityrealestate.com](mailto:info@affinityrealestate.com) | office: 218-237-3333 | fax: 218-237-3377



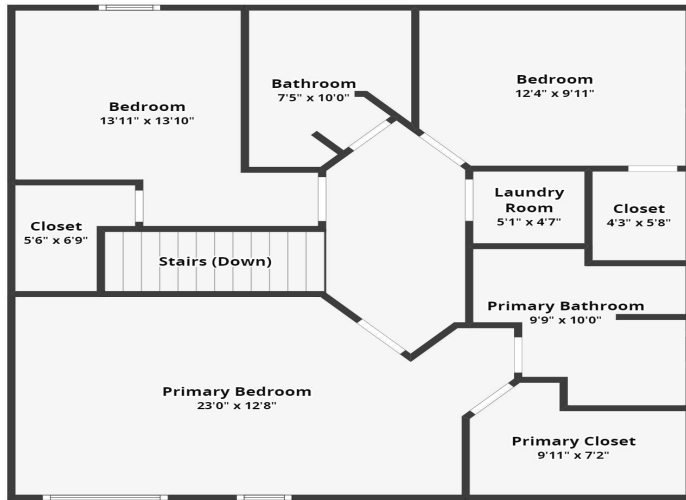
**\$369,900**  
 MLS 6530778 Residential  
 241 Swedmark Drive  
 Bemidji MN 56601



website: [www.AffinityRealEstate.com](http://www.AffinityRealEstate.com) | email: [info@affinityrealestate.com](mailto:info@affinityrealestate.com) | office: 218-237-3333 | fax: 218-237-3377

**Affinity**  
REAL ESTATE INC

**\$369,900**  
MLS 6530778 Residential  
241 Swedmark Drive  
Bemidji MN 56601



website: [www.AffinityRealEstate.com](http://www.AffinityRealEstate.com) | email: [info@affinityrealestate.com](mailto:info@affinityrealestate.com) | office: 218-237-3333 | fax: 218-237-3377



**\$369,900**  
 MLS 6530778 Residential  
 241 Swedmark Drive  
 Bemidji MN 56601