



MLS 6531053 Lake Home

\$259,900

1,430 sq ft
1 bedrooms
3 baths

29713 County Hwy 67
Deer Creek MN 56527

Waterfront: East Leaf

Status: Active

Description:

Welcome to your lakeside retreat on East Leaf Lake! This charming chalet-style home offers 101 feet of lakeshore paradise. Enjoy breathtaking views from the amazing wrap-around lakeside deck. Inside, you'll find an open, light-filled living space with vaulted ceilings, an updated eat-in kitchen, and a cozy wood pellet fireplace in the basement. The lofted master bedroom adds a touch of elegance, while the finished walk-out lower level provides additional living space and easy access to the gently sloping, sand-bottom lakefront. With the potential for three bedrooms (need egress) and a 3-car garage, this is an ideal spot to enjoy the summer. Don't miss out—take a look today!

Additional Details:

Year Built	1958
Lot Acres	0.65
Lot Dimensions	Irregular
Garage Stalls	3
School District	2155
Taxes	\$2,028
Taxes with Assessments	\$2,108
Tax Year	2024

Additional Features:

Basement: Block, Full **Fuel:** Electric **Garage:** 3 **Heat:** Forced Air **Sewer:** Private Sewer **Water:** Well **Air Conditioning:** Central Air

Driving Directions:

From Deer Creek: take Main Ave/County Hwy 50 west about 4 miles. Turn right onto County Hwy 67 about .25 miles to home on left.



Listed By:
Gallery of Homes

Affinity Real Estate Inc. participates in the Regional Multiple Listing Service of Minnesota, Inc Broker Reciprocity (sm) program, allowing us to display other broker's listings on our website. All properties are subject to prior sale, change or withdrawal.



Call Affinity Real Estate

218-237-3333

info@affinityrealestate.com



Affinity Real Estate - 600 Park Avenue South - Park Rapids MN 56470



website: www.AffinityRealEstate.com | email: info@affinityrealestate.com | office: 218-237-3333 | fax:218-237-3377



\$259,900
MLS 6531053 Lake Home
29713 County Hwy 67
Deer Creek MN 56527



website: www.AffinityRealEstate.com | email: info@affinityrealestate.com | office: 218-237-3333 | fax:218-237-3377



\$259,900
MLS 6531053 Lake Home
29713 County Hwy 67
Deer Creek MN 56527



website: www.AffinityRealEstate.com | email: info@affinityrealestate.com | office: 218-237-3333 | fax:218-237-3377

Affinity
REAL ESTATE INC

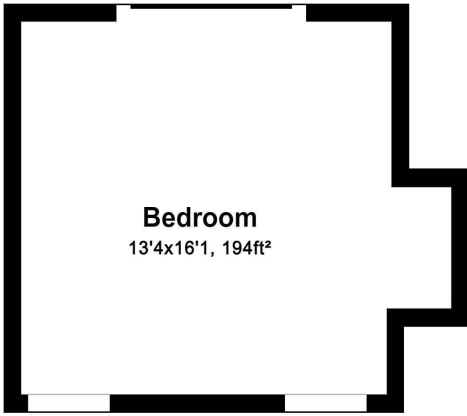
\$259,900
MLS 6531053 Lake Home
29713 County Hwy 67
Deer Creek MN 56527



website: www.AffinityRealEstate.com | email: info@affinityrealestate.com | office: 218-237-3333 | fax:218-237-3377

Affinity
REAL ESTATE INC

\$259,900
MLS 6531053 Lake Home
29713 County Hwy 67
Deer Creek MN 56527



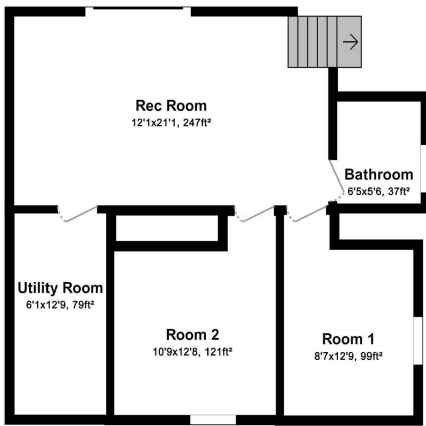
For illustration purposes only. Not to scale.

1st Floor



For illustration purposes only. Not to scale.

Ground Floor



For illustration purposes only. Not to scale.

Basement

website: www.AffinityRealEstate.com | email: info@affinityrealestate.com | office: 218-237-3333 | fax: 218-237-3377



\$259,900
MLS 6531053 Lake Home
29713 County Hwy 67
Deer Creek MN 56527