



MLS 6531155 Lake Land

**\$495,000**

**Description:**

Sunsets Await! Discover the opportunity to build your dream home on this exceptional Bertha Lake property, featuring an impressive 103 feet of frontage along a serene bay. Adorned with grand, towering pines, the lot provides breathtaking sunset vistas to the West. As a member of the Blueberry Bay Association, you'll gain access to Outlot A, offering sandy shores for leisurely swims and additional docking options. Situated just minutes away from essential amenities, this parcel is perfectly positioned for development, complete with connected electric, installed septic system, and drilled well. Bring your plans and get ready to enjoy all the Whitefish Chain has to offer!

**Additional Details:**

Lot Acres	0.48
Lot Dimensions	103 x 160 x 59 x 63 x 183
School District	186
Taxes	\$1,276
Taxes with Assessments	\$1,301
Tax Year	2023

**Additional Features:**

**Driving Directions:**

From Crosslake take County Road 66 north, turn left onto County Road 16 and go about 8.2 miles, turn right onto Blueberry Bay Road. Follow Blueberry Bay Road to fire number 34945. Property on the Left.



Listed By:  
Positive Realty

Affinity Real Estate Inc. participates in the Regional Multiple Listing Service of Minnesota, Inc Broker Reciprocity (sm) program, allowing us to display other broker's listings on our website. All properties are subject to prior sale, change or withdrawal.



**Call Affinity Real Estate**

**218-237-3333**

**info@affinityrealestate.com**



**Affinity Real Estate - 600 Park Avenue South - Park Rapids MN 56470**



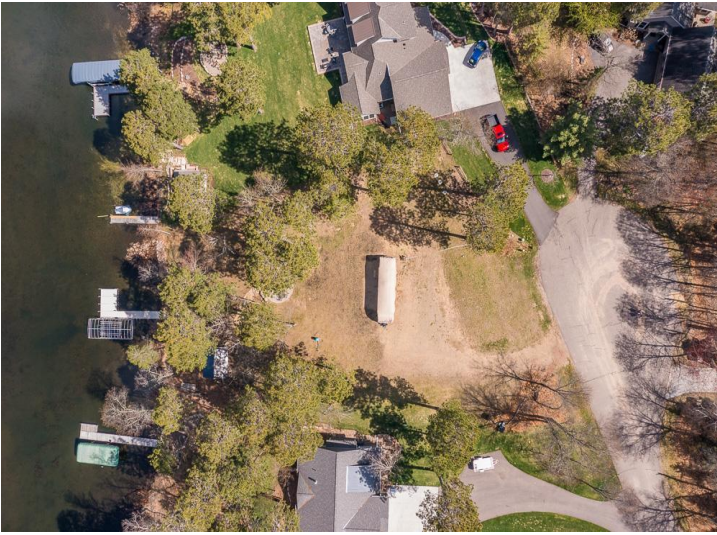


website: [www.AffinityRealEstate.com](http://www.AffinityRealEstate.com) | email: [info@affinityrealestate.com](mailto:info@affinityrealestate.com) | office: 218-237-3333 | fax:218-237-3377

**Affinity**  
REAL ESTATE INC

**\$495,000**  
MLS 6531155 Lake Land  
34945 Blueberry Bay Road  
Pequot Lakes MN 56472





website: [www.AffinityRealEstate.com](http://www.AffinityRealEstate.com) | email: [info@affinityrealestate.com](mailto:info@affinityrealestate.com) | office: 218-237-3333 | fax:218-237-3377

**Affinity**  
REAL ESTATE INC

**\$495,000**  
MLS 6531155 Lake Land  
34945 Blueberry Bay Road  
Pequot Lakes MN 56472



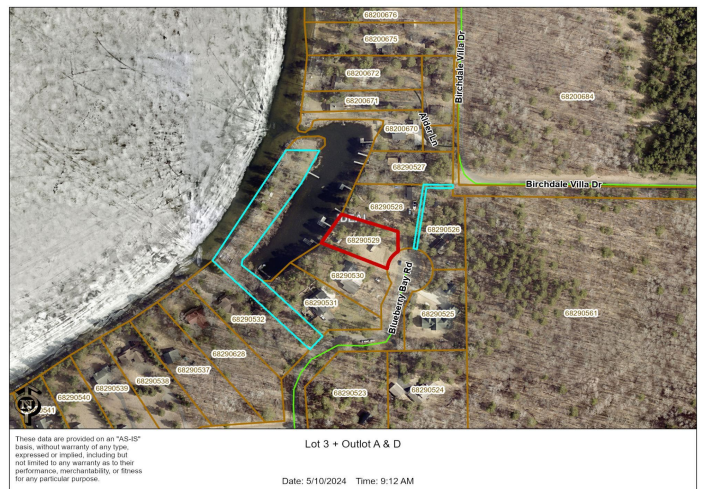
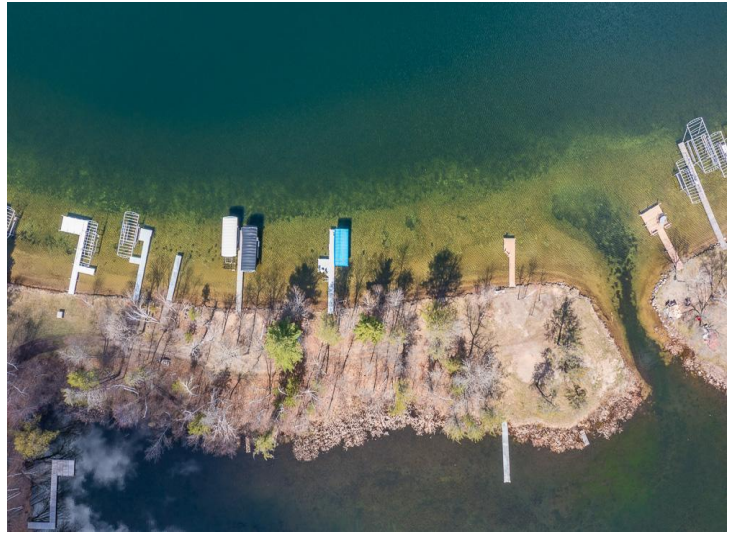


website: [www.AffinityRealEstate.com](http://www.AffinityRealEstate.com) | email: [info@affinityrealestate.com](mailto:info@affinityrealestate.com) | office: 218-237-3333 | fax:218-237-3377



**\$495,000**  
MLS 6531155 Lake Land  
34945 Blueberry Bay Road  
Pequot Lakes MN 56472





website: [www.AffinityRealEstate.com](http://www.AffinityRealEstate.com) | email: [info@affinityrealestate.com](mailto:info@affinityrealestate.com) | office: 218-237-3333 | fax: 218-237-3377



**\$495,000**  
 MLS 6531155 Lake Land  
 34945 Blueberry Bay Road  
 Pequot Lakes MN 56472