



MLS 6531386 Lake Home

\$344,900

2,387 sq ft
3 bedrooms
2 baths

7643 Marion Drive
Motley MN 56466

Waterfront: Meadow

Status: Pending

Description:

Welcome to Wilderness Park! Nestled on 1.92 acres of serene landscape, this property features 236 feet of Meadow Lake frontage. Spacious 3-bedroom, 2-bathroom home offers a welcoming ambiance with an open concept layout that includes a living-dining area with wood burning fireplace, gourmet kitchen with granite countertops and walk-in pantry, master bedroom with large walk-in closet and laundry hookup, lower level walk-out family room, and four-season porch offering a tranquil space to enjoy panoramic views of the lake in every season. The 3-car garage provides ample room for vehicles and storage. Wilderness Park Association features a clubhouse with a pool and shared acres for recreational use. Whether you're seeking a permanent residence or a vacation getaway, this property offers comfortable living with amenities.

Additional Details:

Year Built	2011
Lot Acres	1.92
Lot Dimensions	irregular
Garage Stalls	3
School District	2174
Taxes	\$1,314
Taxes with Assessments	\$1,380
Tax Year	2024

Additional Features:

Fuel: Electric, Wood **Heat:** Baseboard, Ductless Mini-Split, Forced Air, Wood Stove

Driving Directions:

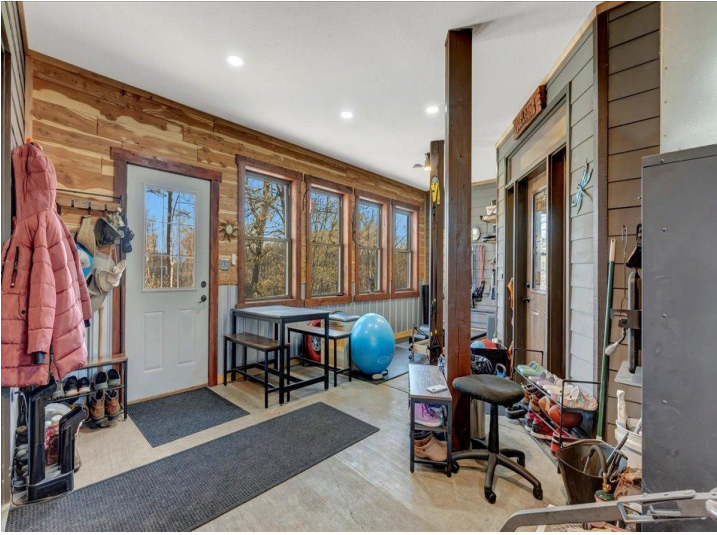
From MN-210 W turn right onto County Rd. 1 SW to left onto 72nd St. SW to left onto 45th Ave. SW to right onto Meadow Lake Rd. SW to right onto Marion Dr.

 Listed By:
Weichert REALTORS Tower Properties

Affinity Real Estate Inc. participates in the Regional Multiple Listing Service of Minnesota, Inc Broker Reciprocity (sm) program, allowing us to display other broker's listings on our website. All properties are subject to prior sale, change or withdrawal.

 **Call Affinity Real Estate**
218-237-3333
info@affinityrealestate.com

Affinity Real Estate - 600 Park Avenue South - Park Rapids MN 56470



website: www.AffinityRealEstate.com | email: info@affinityrealestate.com | office: 218-237-3333 | fax:218-237-3377



\$344,900
MLS 6531386 Lake Home
7643 Marion Drive
Motley MN 56466



website: www.AffinityRealEstate.com | email: info@affinityrealestate.com | office: 218-237-3333 | fax: 218-237-3377

Affinity
REAL ESTATE INC

\$344,900
MLS 6531386 Lake Home
7643 Marion Drive
Motley MN 56466



website: www.AffinityRealEstate.com | email: info@affinityrealestate.com | office: 218-237-3333 | fax: 218-237-3377

Affinity
REAL ESTATE INC

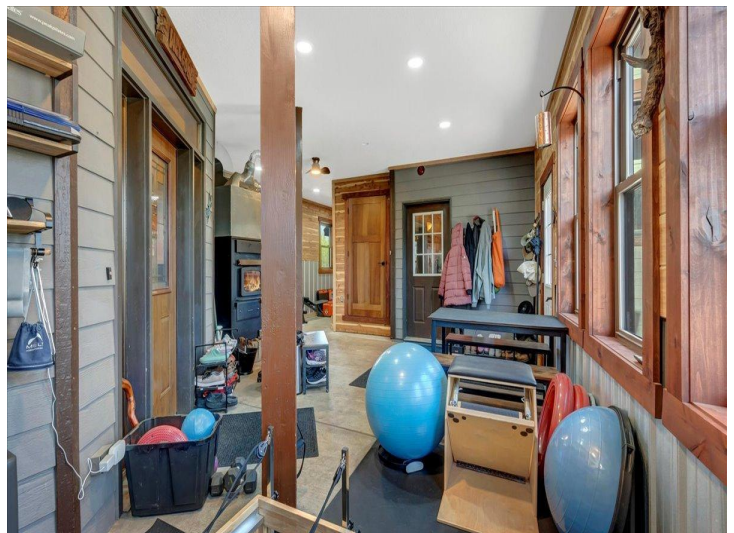
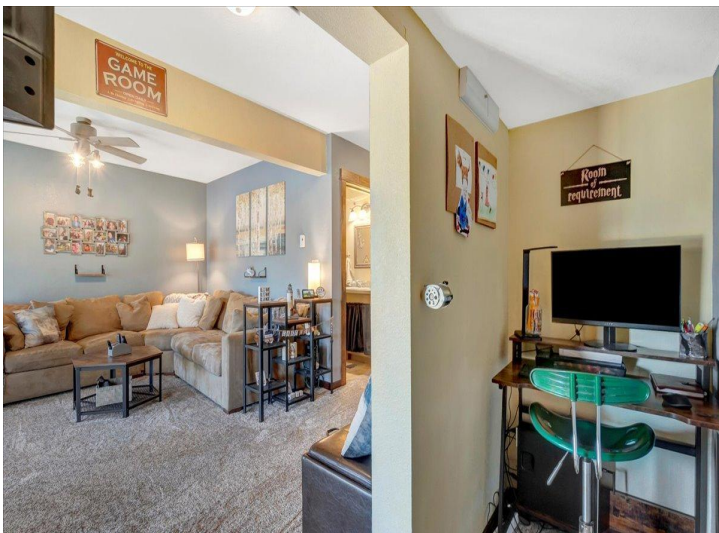
\$344,900
MLS 6531386 Lake Home
7643 Marion Drive
Motley MN 56466



website: www.AffinityRealEstate.com | email: info@affinityrealestate.com | office: 218-237-3333 | fax:218-237-3377



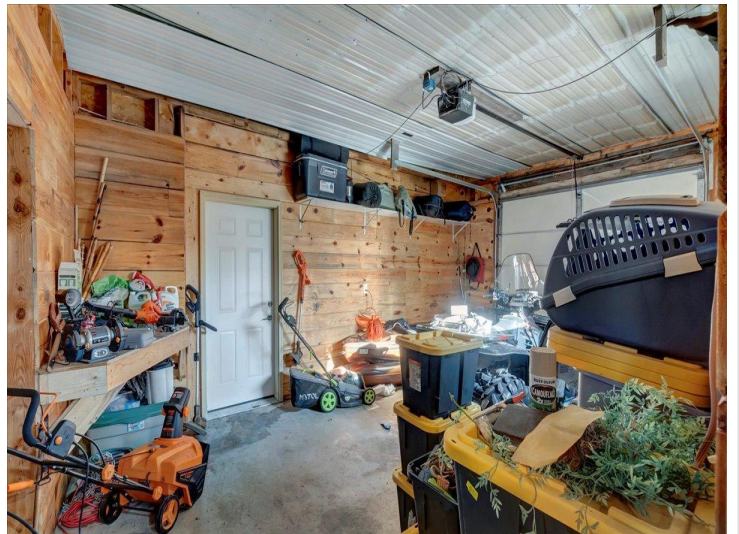
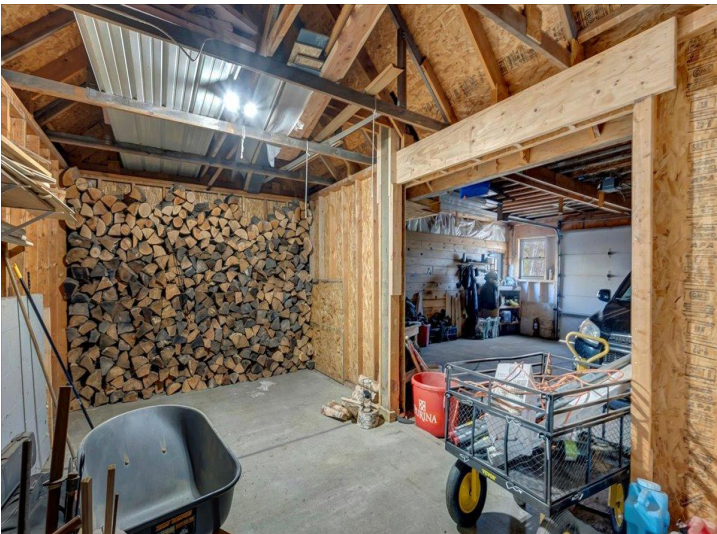
\$344,900
MLS 6531386 Lake Home
7643 Marion Drive
Motley MN 56466



website: www.AffinityRealEstate.com | email: info@affinityrealestate.com | office: 218-237-3333 | fax: 218-237-3377

Affinity
REAL ESTATE INC

\$344,900
MLS 6531386 Lake Home
7643 Marion Drive
Motley MN 56466



website: www.AffinityRealEstate.com | email: info@affinityrealestate.com | office: 218-237-3333 | fax: 218-237-3377

Affinity
REAL ESTATE INC

\$344,900
MLS 6531386 Lake Home
7643 Marion Drive
Motley MN 56466



website: www.AffinityRealEstate.com | email: info@affinityrealestate.com | office: 218-237-3333 | fax: 218-237-3377

Affinity
REAL ESTATE INC

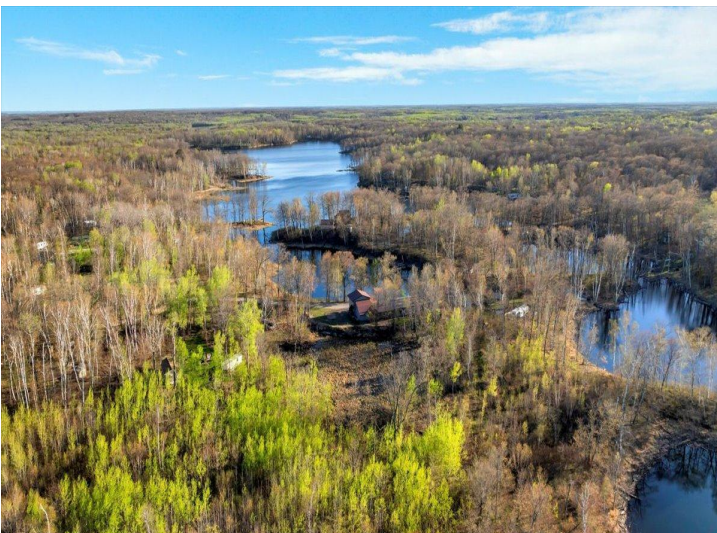
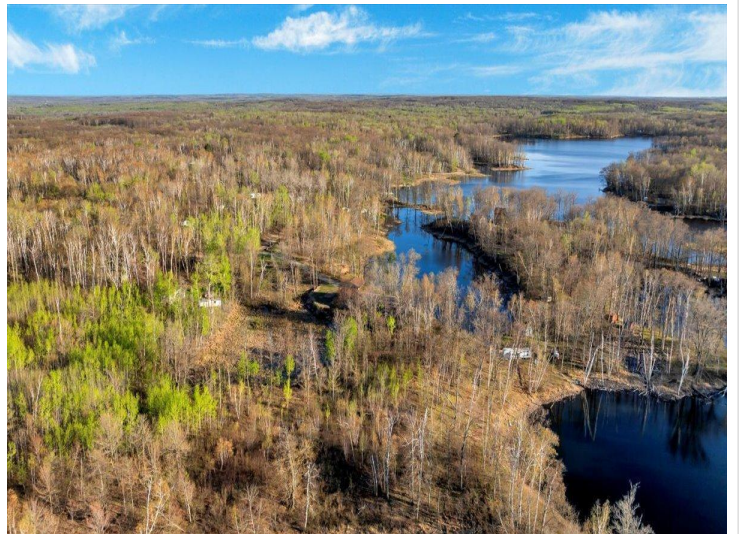
\$344,900
MLS 6531386 Lake Home
7643 Marion Drive
Motley MN 56466



website: www.AffinityRealEstate.com | email: info@affinityrealestate.com | office: 218-237-3333 | fax:218-237-3377



\$344,900
MLS 6531386 Lake Home
7643 Marion Drive
Motley MN 56466



website: www.AffinityRealEstate.com | email: info@affinityrealestate.com | office: 218-237-3333 | fax: 218-237-3377

Affinity
REAL ESTATE INC

\$344,900
MLS 6531386 Lake Home
7643 Marion Drive
Motley MN 56466



website: www.AffinityRealEstate.com | email: info@affinityrealestate.com | office: 218-237-3333 | fax:218-237-3377



\$344,900
MLS 6531386 Lake Home
7643 Marion Drive
Motley MN 56466



website: www.AffinityRealEstate.com | email: info@affinityrealestate.com | office: 218-237-3333 | fax:218-237-3377



\$344,900
MLS 6531386 Lake Home
7643 Marion Drive
Motley MN 56466



website: www.AffinityRealEstate.com | email: info@affinityrealestate.com | office: 218-237-3333 | fax:218-237-3377



\$344,900
 MLS 6531386 Lake Home
 7643 Marion Drive
 Motley MN 56466