



MLS 6531495 Land

**\$59,900**

2.5 Acres  
Finished Lot(s)

TBD Tract B Carlson Drive  
Rochert MN 56578

Status: Pending

**Description:**

Introducing a picturesque 2.5-acre lot nestled in the tranquil countryside along Carlson Drive. This expansive parcel of land offers an idyllic setting for building your dream home or retreat. Surrounded by the beauty of nature, the property provides ample space for various outdoor activities and landscaping ventures. This lot is 16 minutes from downtown Detroit Lakes! Adjacent to the 321 acre Pickerel Wildlife Management Area.

**Additional Details:**

Lot Acres	2.5
Lot Dimensions	260 x 459 approx
School District	22
Taxes	\$278
Taxes with Assessments	\$278
Tax Year	2024

**Additional Features:**

**Driving Directions:**

From Detroit Lakes, take US HWY 34 East to Co Hwy-29, turn left and drive North to Co Hwy 32, turn left and drive West to 330th Ave South, turn left and follow to property on left.



Listed By:  
Counselor Realty of Detroit Lakes

Affinity Real Estate Inc. participates in the Regional Multiple Listing Service of Minnesota, Inc Broker Reciprocity (sm) program, allowing us to display other broker's listings on our website. All properties are subject to prior sale, change or withdrawal.



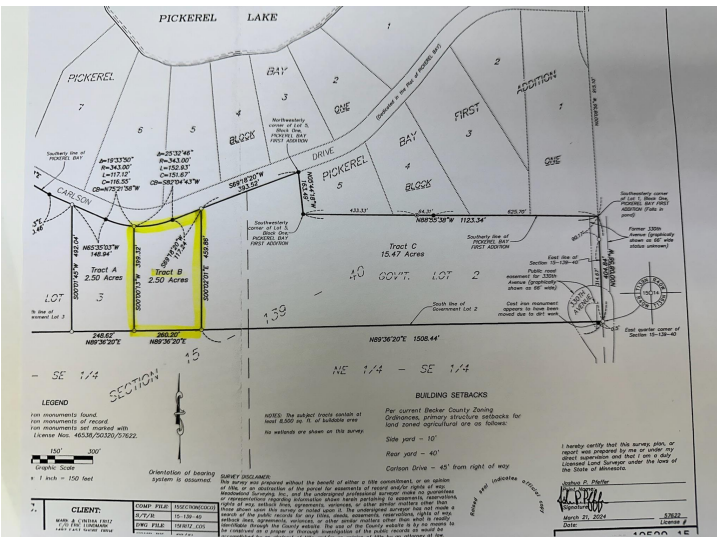
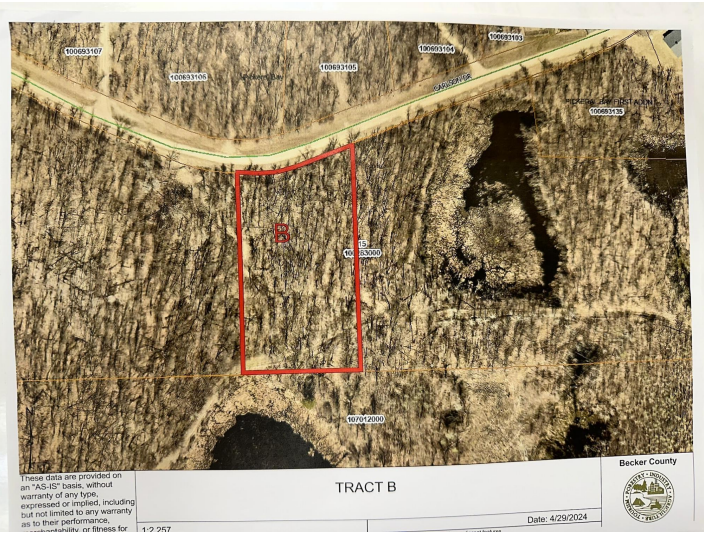
**Call Affinity Real Estate**

**218-237-3333**

**info@affinityrealestate.com**



**Affinity Real Estate - 600 Park Avenue South - Park Rapids MN 56470**



website: [www.AffinityRealEstate.com](http://www.AffinityRealEstate.com) | email: [info@affinityrealestate.com](mailto:info@affinityrealestate.com) | office: 218-237-3333 | fax: 218-237-3377



**\$59,900**  
 MLS 6531495 Land  
 TBD Tract B Carlson Drive  
 Rochert MN 56578



website: [www.AffinityRealEstate.com](http://www.AffinityRealEstate.com) | email: [info@affinityrealestate.com](mailto:info@affinityrealestate.com) | office: 218-237-3333 | fax:218-237-3377



**\$59,900**  
MLS 6531495 Land  
TBD Tract B Carlson Drive  
Rochert MN 56578



website: [www.AffinityRealEstate.com](http://www.AffinityRealEstate.com) | email: [info@affinityrealestate.com](mailto:info@affinityrealestate.com) | office: 218-237-3333 | fax:218-237-3377



**\$59,900**  
MLS 6531495 Land  
TBD Tract B Carlson Drive  
Rochert MN 56578



These data are provided on an "AS-IS" basis, without warranty of any type, expressed or implied, including but not limited to any warranty as to their performance, merchantability, or fitness for

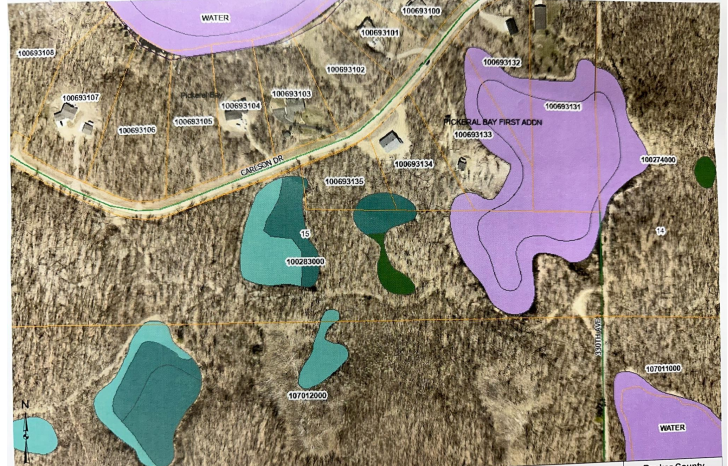
1-9,028

TRACT B1

Becker County



Date: 4/29/2024



These data are provided on an "AS-IS" basis, without warranty of any type, expressed or implied, including but not limited to any warranty as to their performance,

Date: 4/29/2024

Nat Wetlands Inventory

Becker County



website: [www.AffinityRealEstate.com](http://www.AffinityRealEstate.com) | email: [info@affinityrealestate.com](mailto:info@affinityrealestate.com) | office: 218-237-3333 | fax: 218-237-3377



**\$59,900**  
 MLS 6531495 Land  
 TBD Tract B Carlson Drive  
 Rochert MN 56578