



MLS 6531556 Land

\$149,900

15.47 Acres
Finished Lot(s)

TBD Tract C Carlson Drive
Rochert MN 56578

Status: Active

Description:

Presenting an expansive 15.47-acre lot nestled in the serene countryside along Carlson Drive, just a mere 16-minute drive from downtown Detroit Lakes. This vast parcel of land offers an unparalleled opportunity to create your own private retreat in a tranquil rural setting. Located just North of the 321 acre Pickerel Wildlife Management Area.

Additional Details:

| | |
|------------------------|--------------------|
| Lot Acres | 15.47 |
| Lot Dimensions | 15.47 acres irreg. |
| School District | 22 |
| Taxes | \$278 |
| Taxes with Assessments | \$500 |
| Tax Year | 2024 |

Additional Features:

Driving Directions:

From Detroit Lakes, take US HWY 34 East to Co Hwy-29, turn left and drive North to Co Hwy 32, turn left and drive West to 330th Ave South, turn left and follow to property on left.



Listed By:
Counselor Realty Detroit Lakes

Affinity Real Estate Inc. participates in the Regional Multiple Listing Service of Minnesota, Inc Broker Reciprocity (sm) program, allowing us to display other broker's listings on our website. All properties are subject to prior sale, change or withdrawal.



Call Affinity Real Estate

218-237-3333

info@affinityrealestate.com



Affinity Real Estate - 600 Park Avenue South - Park Rapids MN 56470



website: www.AffinityRealEstate.com | email: info@affinityrealestate.com | office: 218-237-3333 | fax:218-237-3377



\$149,900
MLS 6531556 Land
TBD Tract C Carlson Drive
Rochert MN 56578



website: www.AffinityRealEstate.com | email: info@affinityrealestate.com | office: 218-237-3333 | fax:218-237-3377

Affinity
REAL ESTATE INC

\$149,900
MLS 6531556 Land
TBD Tract C Carlson Drive
Rochert MN 56578



website: www.AffinityRealEstate.com | email: info@affinityrealestate.com | office: 218-237-3333 | fax:218-237-3377



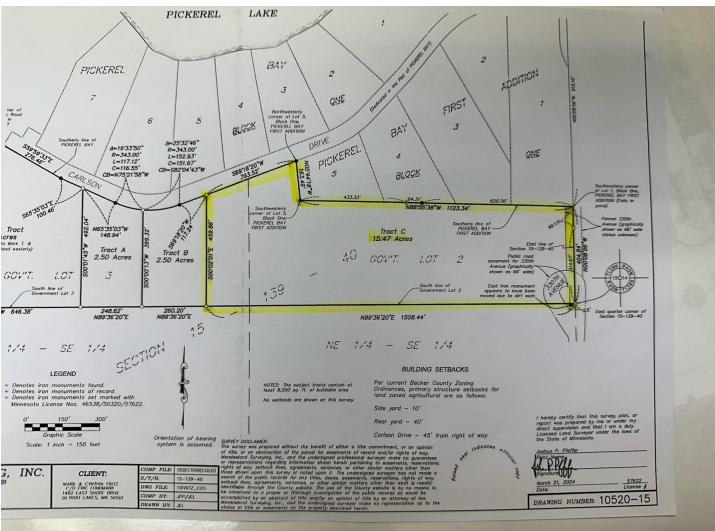
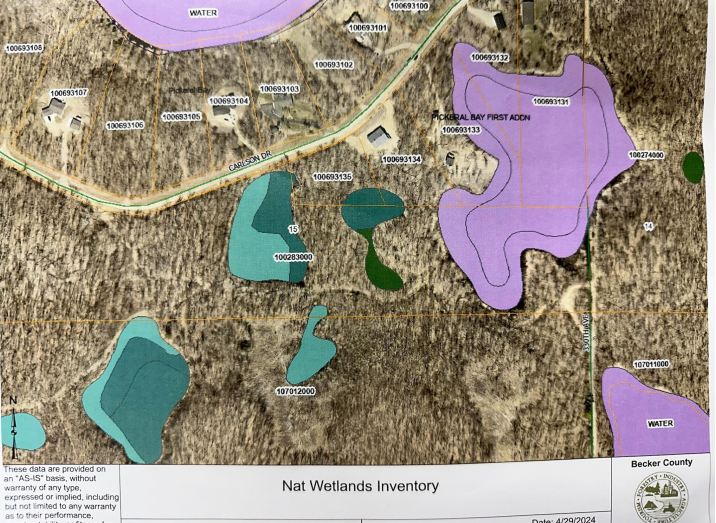
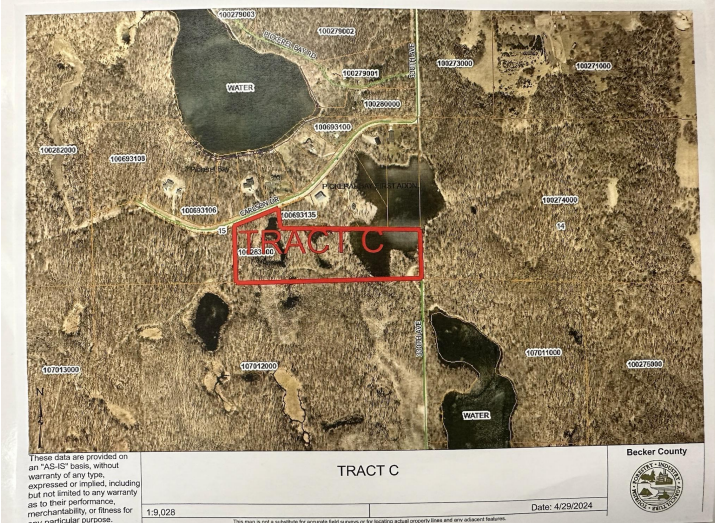
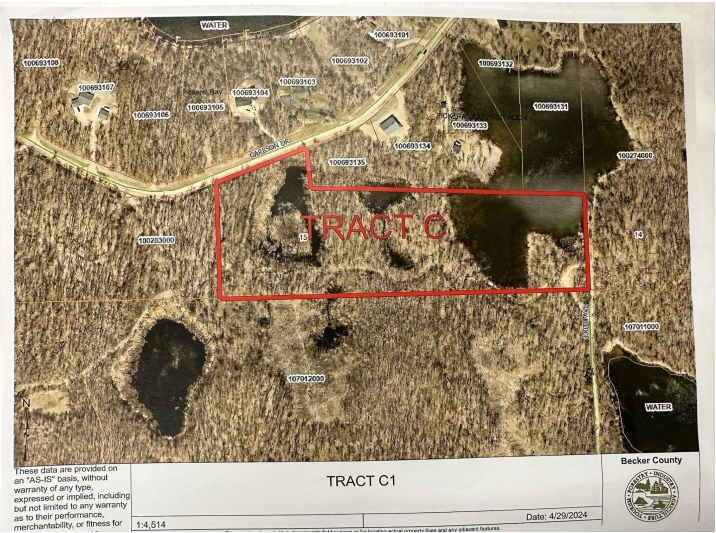
\$149,900
MLS 6531556 Land
TBD Tract C Carlson Drive
Rochert MN 56578



website: www.AffinityRealEstate.com | email: info@affinityrealestate.com | office: 218-237-3333 | fax: 218-237-3377



\$149,900
MLS 6531556 Land
TBD Tract C Carlson Drive
Rochert MN 56578



website: www.AffinityRealEstate.com | email: info@affinityrealestate.com | office: 218-237-3333 | fax: 218-237-3377



\$149,900
 MLS 6531556 Land
 TBD Tract C Carlson Drive
 Rochert MN 56578