



MLS 6531703 Lake Land

\$16,500

Description:

Spectacular Lot tucked away at the end of a cul de sac, with a nice size pond in the back that is part of the property. This will make an amazing home site or cabin with a great view of that pond. Adjoining lot also for sale. Deeded access to 4 nearby lakes and other great amenities for property owners, roads are plowed for year round living, and enjoyment. Build now or anytime in the future.

Additional Details:

Lot Acres	0.71
Lot Dimensions	43x210x241x293
School District	2170
Taxes	\$10
Taxes with Assessments	\$10
Tax Year	2023

Additional Features:

Driving Directions:

400th Street to Oriole court to end, cul-de-sac.



Listed By:
Smart Choice Realty

Affinity Real Estate Inc. participates in the Regional Multiple Listing Service of Minnesota, Inc Broker Reciprocity (sm) program, allowing us to display other broker's listings on our website. All properties are subject to prior sale, change or withdrawal.



Call Affinity Real Estate

218-237-3333

info@affinityrealestate.com



Affinity Real Estate - 600 Park Avenue South - Park Rapids MN 56470



website: www.AffinityRealEstate.com | email: info@affinityrealestate.com | office: 218-237-3333 | fax: 218-237-3377



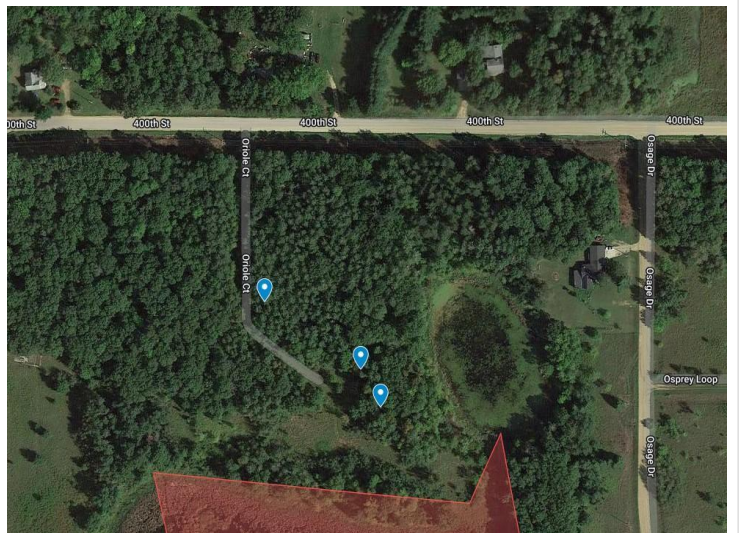
\$16,500
 MLS 6531703 Lake Land
 xxx Oriole Court
 Browerville MN 56438



website: www.AffinityRealEstate.com | email: info@affinityrealestate.com | office: 218-237-3333 | fax: 218-237-3377



\$16,500
MLS 6531703 Lake Land
xxx Oriole Court
Browerville MN 56438



website: www.AffinityRealEstate.com | email: info@affinityrealestate.com | office: 218-237-3333 | fax: 218-237-3377



\$16,500
MLS 6531703 Lake Land
xxx Oriole Court
Browerville MN 56438