



MLS 6532014 Residential

\$1,160,000

3,375 sq ft
3 bedrooms
3 baths

6258 State 87
Backus MN 56435

Status: Active

Description:

Welcome to this breathtaking log home retreat, a true masterpiece of rustic elegance, perfectly situated on a sprawling 163-acre canvas of natural beauty. Bordered by 1000's of acres of pristine state land, this property offers an unparalleled sense of seclusion and tranquility. Step inside this inviting 3-bedroom, 3-bath haven, where the exposed log beams and vaulted ceilings exude warmth and luxury while two massive fieldstone fireplaces stand as impressive focal points. The connection between indoor and outdoor living is seamless here while the covered decks provide space for outdoor seating, dining, and relaxation. This log home and its accompanying acreage is more than just a residence; it's a lifestyle defined by tranquility, luxury, and the unspoiled beauty of the great outdoors. If you're seeking a retreat that blends the charm of log home living with the grandeur of a vast estate, look no further. Your dream of an idyllic haven is realized here.

Additional Details:

Year Built	2000
Lot Acres	162.64
Lot Dimensions	1357x5319x1378x5298
Garage Stalls	4
School District	2174
Taxes	\$3,206
Taxes with Assessments	\$3,273
Tax Year	2023

Additional Features:

Basement: Finished, Walkout **Fuel:** Electric, Propane, Wood **Garage:** 4 **Heat:** Forced Air, Heat Pump, Hot Water, Radiant Floor, Outdoor Boiler **Sewer:** Private Sewer **Water:** Well **Air Conditioning:** Central Air, Heat Pump

Driving Directions:

From Nisswa, north on Hwy 371 to Backus, West on State Hwy 87 to fire #6258



Listed By:
Premier Real Estate Services

Affinity Real Estate Inc. participates in the Regional Multiple Listing Service of Minnesota, Inc Broker Reciprocity (sm) program, allowing us to display other broker's listings on our website. All properties are subject to prior sale, change or withdrawal.



Call Affinity Real Estate

218-237-3333

info@affinityrealestate.com



Affinity Real Estate - 600 Park Avenue South - Park Rapids MN 56470



website: www.AffinityRealEstate.com | email: info@affinityrealestate.com | office: 218-237-3333 | fax:218-237-3377



\$1,160,000
MLS 6532014 Residential
6258 State 87
Backus MN 56435



website: www.AffinityRealEstate.com | email: info@affinityrealestate.com | office: 218-237-3333 | fax: 218-237-3377

Affinity
REAL ESTATE INC

\$1,160,000
MLS 6532014 Residential
6258 State 87
Backus MN 56435



website: www.AffinityRealEstate.com | email: info@affinityrealestate.com | office: 218-237-3333 | fax: 218-237-3377

Affinity
REAL ESTATE INC

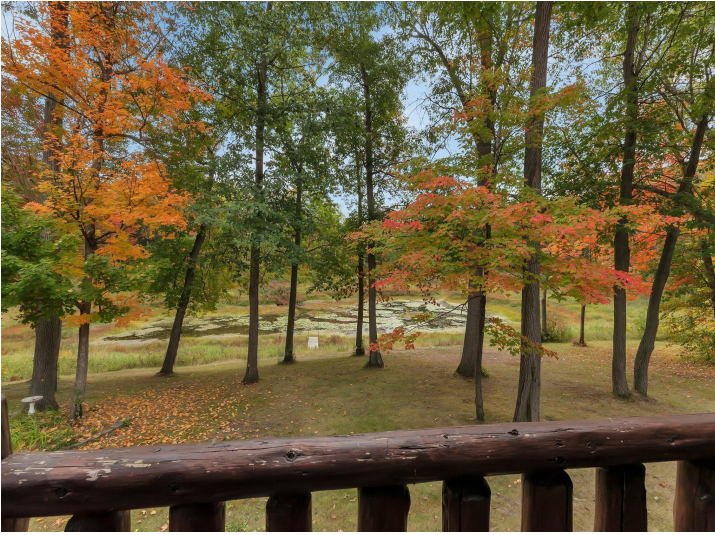
\$1,160,000
MLS 6532014 Residential
6258 State 87
Backus MN 56435



website: www.AffinityRealEstate.com | email: info@affinityrealestate.com | office: 218-237-3333 | fax: 218-237-3377

Affinity
REAL ESTATE INC

\$1,160,000
MLS 6532014 Residential
6258 State 87
Backus MN 56435



website: www.AffinityRealEstate.com | email: info@affinityrealestate.com | office: 218-237-3333 | fax:218-237-3377

Affinity
REAL ESTATE INC

\$1,160,000
MLS 6532014 Residential
6258 State 87
Backus MN 56435



website: www.AffinityRealEstate.com | email: info@affinityrealestate.com | office: 218-237-3333 | fax:218-237-3377

Affinity
REAL ESTATE INC

\$1,160,000
MLS 6532014 Residential
6258 State 87
Backus MN 56435



website: www.AffinityRealEstate.com | email: info@affinityrealestate.com | office: 218-237-3333 | fax: 218-237-3377

Affinity
REAL ESTATE INC

\$1,160,000
MLS 6532014 Residential
6258 State 87
Backus MN 56435



website: www.AffinityRealEstate.com | email: info@affinityrealestate.com | office: 218-237-3333 | fax: 218-237-3377

Affinity
REAL ESTATE INC

\$1,160,000
MLS 6532014 Residential
6258 State 87
Backus MN 56435



website: www.AffinityRealEstate.com | email: info@affinityrealestate.com | office: 218-237-3333 | fax: 218-237-3377

Affinity
REAL ESTATE INC

\$1,160,000
MLS 6532014 Residential
6258 State 87
Backus MN 56435



website: www.AffinityRealEstate.com | email: info@affinityrealestate.com | office: 218-237-3333 | fax:218-237-3377



\$1,160,000
MLS 6532014 Residential
6258 State 87
Backus MN 56435



website: www.AffinityRealEstate.com | email: info@affinityrealestate.com | office: 218-237-3333 | fax:218-237-3377



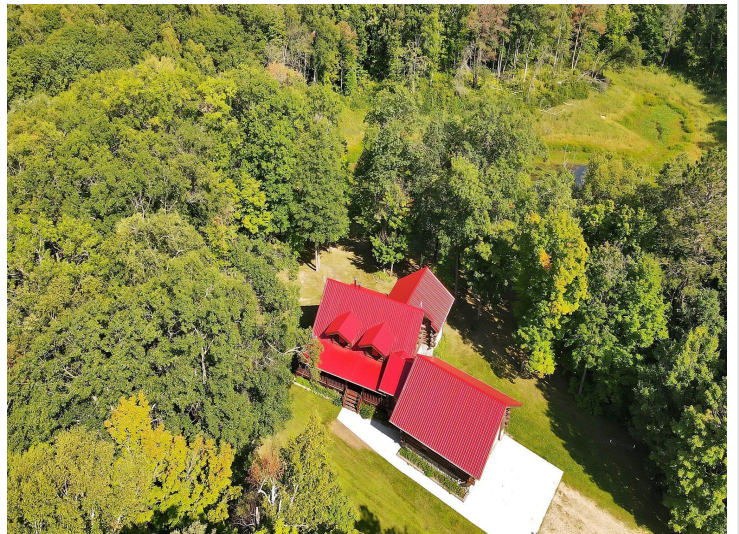
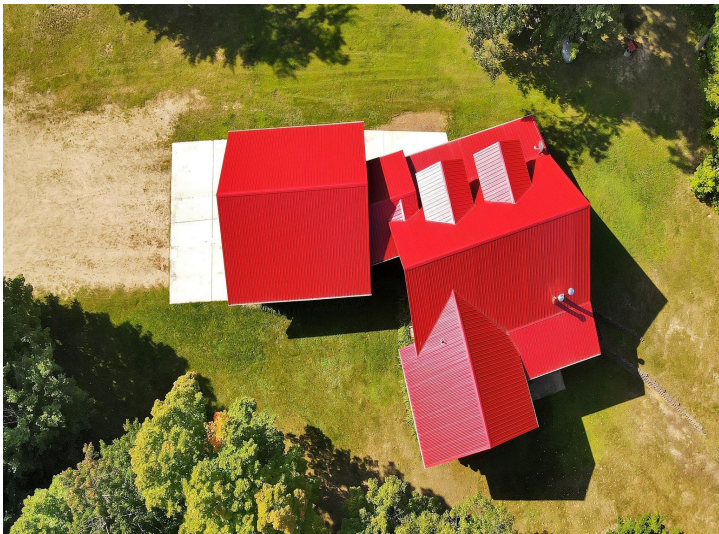
\$1,160,000
MLS 6532014 Residential
6258 State 87
Backus MN 56435



website: www.AffinityRealEstate.com | email: info@affinityrealestate.com | office: 218-237-3333 | fax:218-237-3377



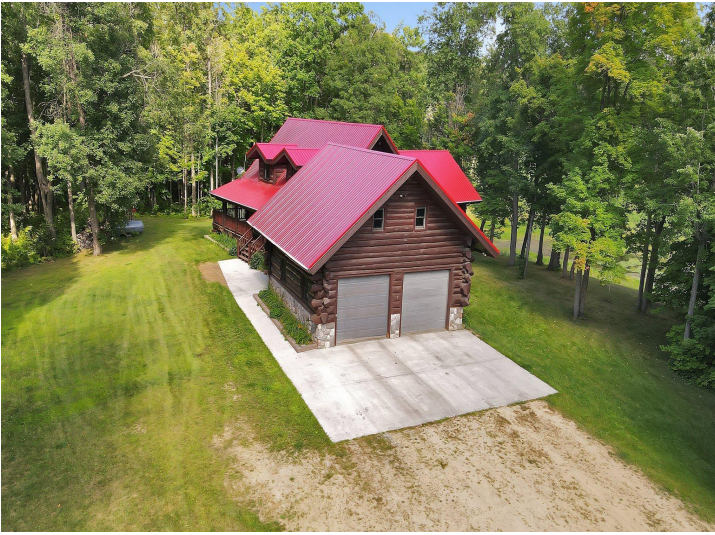
\$1,160,000
MLS 6532014 Residential
6258 State 87
Backus MN 56435



website: www.AffinityRealEstate.com | email: info@affinityrealestate.com | office: 218-237-3333 | fax:218-237-3377

Affinity
REAL ESTATE INC

\$1,160,000
MLS 6532014 Residential
6258 State 87
Backus MN 56435



website: www.AffinityRealEstate.com | email: info@affinityrealestate.com | office: 218-237-3333 | fax:218-237-3377



\$1,160,000
MLS 6532014 Residential
6258 State 87
Backus MN 56435



website: www.AffinityRealEstate.com | email: info@affinityrealestate.com | office: 218-237-3333 | fax:218-237-3377



\$1,160,000
MLS 6532014 Residential
6258 State 87
Backus MN 56435



website: www.AffinityRealEstate.com | email: info@affinityrealestate.com | office: 218-237-3333 | fax:218-237-3377



\$1,160,000
MLS 6532014 Residential
6258 State 87
Backus MN 56435