



MLS 6532045 Lake Home

\$1,300,000

2,350 sq ft
3 bedrooms
2 baths

3830 County Road 54
Longville MN 56655

Waterfront: Little Boy Lake
(Wabedo Twp.)

Status: Active

Description:

Checking Boxes....Do you value your privacy? Want to be on a Great fishing lake? Want 1 level living in a maintenance free home? Like an attached heated/insulated garage? Have 3200 sq ft of storage on site for boats, trucks, trailers and toys? Here you go. This 2017 built home, loaded with high end finishing's, is on 7 breathtaking acres with 550 ft of waterfront on one of the state's best fishing lakes, Little Boy, with access to Wabedo!! Schedule your showing today.

Additional Details:

Year Built	2017
Lot Acres	7
Lot Dimensions	550x676x435x732
Garage Stalls	3
School District	118
Taxes	\$3,944
Taxes with Assessments	\$4,010
Tax Year	2024

Additional Features:

Basement: Crawl Space **Fuel:** Electric, Propane **Garage:** 3 **Heat:** Dual, Forced Air, Fireplace(s), Heat Pump **Sewer:** Outhouse, Private Sewer, Septic System Compliant - Yes, Tank with Drainage Field **Water:** Submersible - 4 Inch, Drilled, Well **Air Conditioning:** Central Air, Dual, Heat Pump

Driving Directions:

From Longville, South to 54/7, Left onto 54/7 a short bit to 54, Right onto 54 to 3830.



Listed By:
Counselor Realty, Inc.

Affinity Real Estate Inc. participates in the Regional Multiple Listing Service of Minnesota, Inc Broker Reciprocity (sm) program, allowing us to display other broker's listings on our website. All properties are subject to prior sale, change or withdrawal.



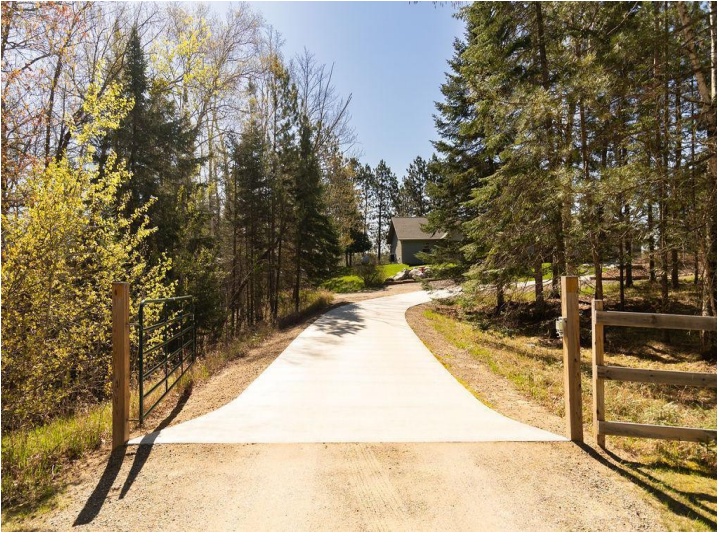
Call Affinity Real Estate

218-237-3333

info@affinityrealestate.com



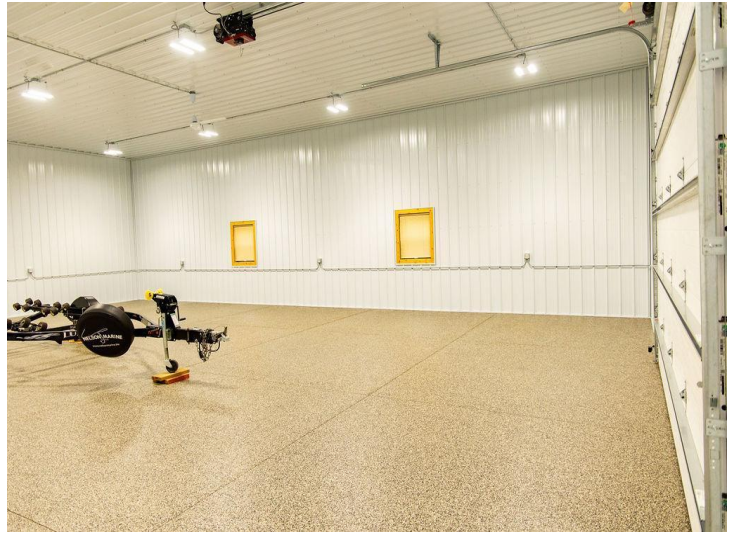
Affinity Real Estate - 600 Park Avenue South - Park Rapids MN 56470



website: www.AffinityRealEstate.com | email: info@affinityrealestate.com | office: 218-237-3333 | fax: 218-237-3377

Affinity
REAL ESTATE INC

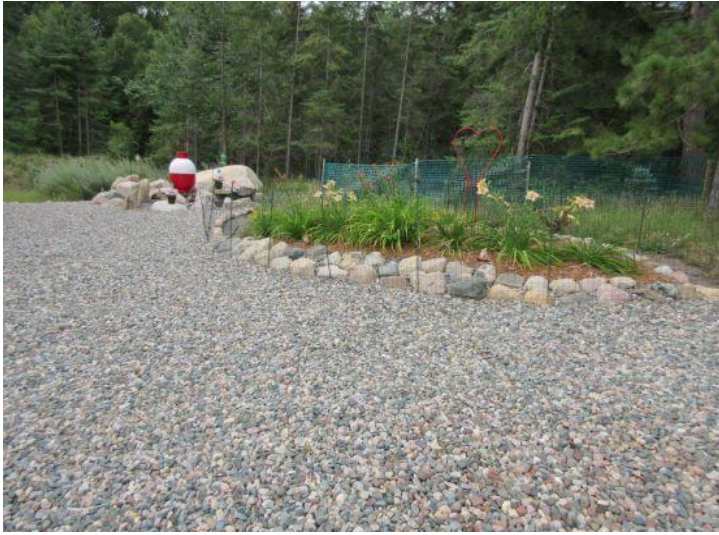
\$1,300,000
MLS 6532045 Lake Home
3830 County Road 54
Longville MN 56655



website: www.AffinityRealEstate.com | email: info@affinityrealestate.com | office: 218-237-3333 | fax: 218-237-3377

Affinity
REAL ESTATE INC

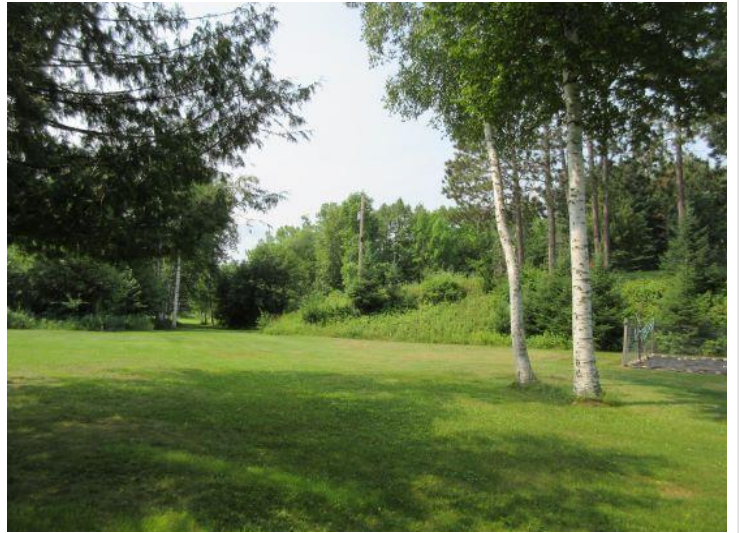
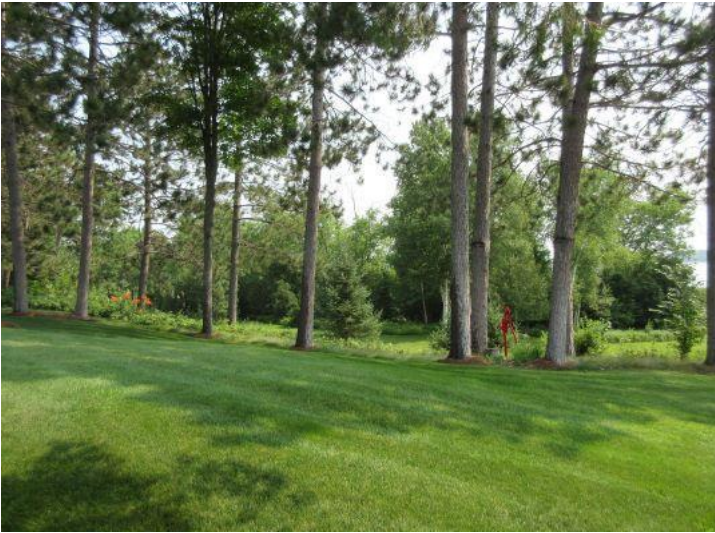
\$1,300,000
MLS 6532045 Lake Home
3830 County Road 54
Longville MN 56655



website: www.AffinityRealEstate.com | email: info@affinityrealestate.com | office: 218-237-3333 | fax:218-237-3377



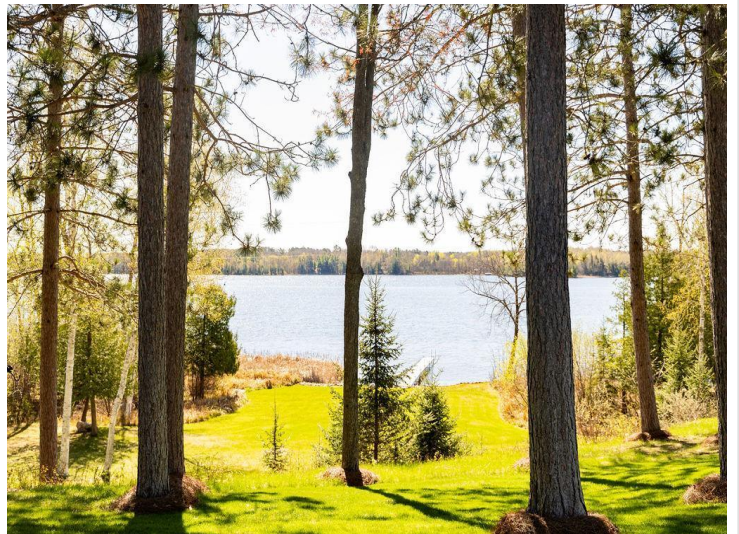
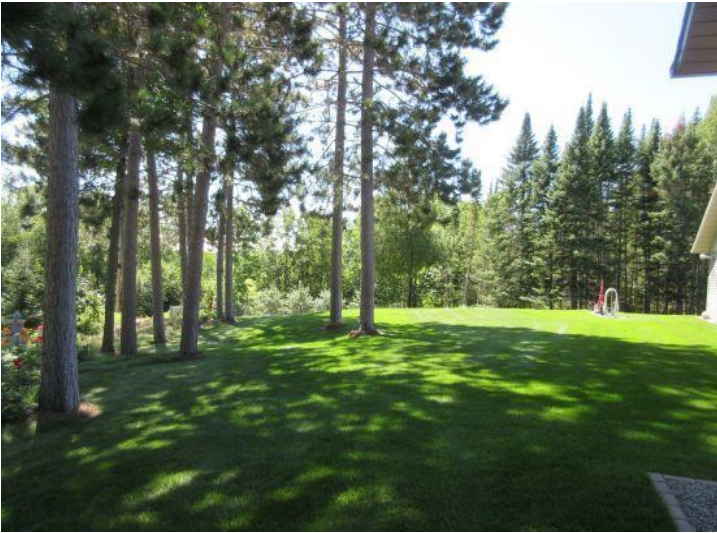
\$1,300,000
MLS 6532045 Lake Home
3830 County Road 54
Longville MN 56655



website: www.AffinityRealEstate.com | email: info@affinityrealestate.com | office: 218-237-3333 | fax:218-237-3377



\$1,300,000
MLS 6532045 Lake Home
3830 County Road 54
Longville MN 56655



website: www.AffinityRealEstate.com | email: info@affinityrealestate.com | office: 218-237-3333 | fax:218-237-3377



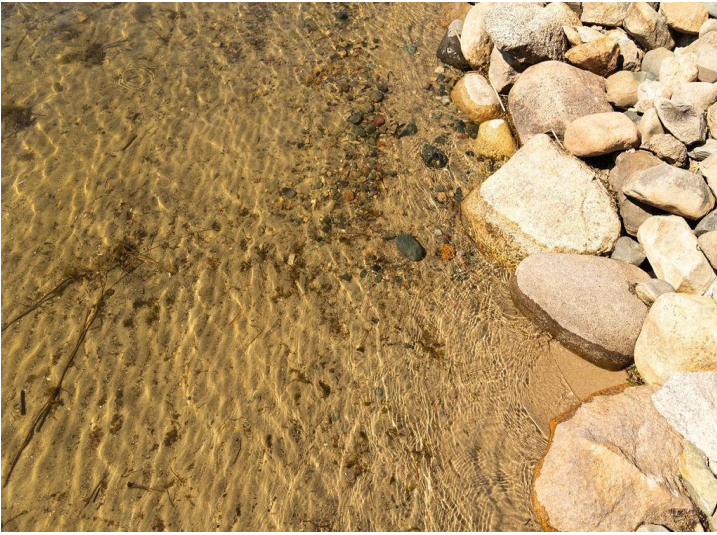
\$1,300,000
MLS 6532045 Lake Home
3830 County Road 54
Longville MN 56655



website: www.AffinityRealEstate.com | email: info@affinityrealestate.com | office: 218-237-3333 | fax:218-237-3377



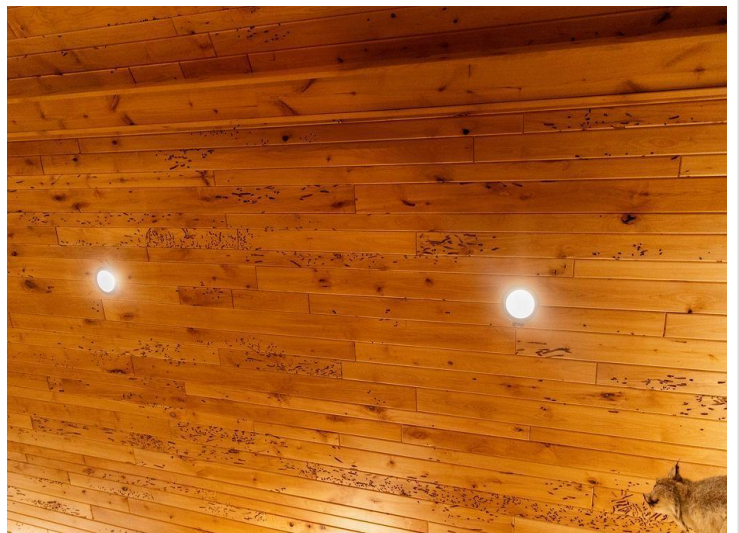
\$1,300,000
MLS 6532045 Lake Home
3830 County Road 54
Longville MN 56655



website: www.AffinityRealEstate.com | email: info@affinityrealestate.com | office: 218-237-3333 | fax:218-237-3377

Affinity
REAL ESTATE INC

\$1,300,000
MLS 6532045 Lake Home
3830 County Road 54
Longville MN 56655



website: www.AffinityRealEstate.com | email: info@affinityrealestate.com | office: 218-237-3333 | fax:218-237-3377

Affinity
REAL ESTATE INC

\$1,300,000
MLS 6532045 Lake Home
3830 County Road 54
Longville MN 56655



website: www.AffinityRealEstate.com | email: info@affinityrealestate.com | office: 218-237-3333 | fax: 218-237-3377

Affinity
REAL ESTATE INC

\$1,300,000
MLS 6532045 Lake Home
3830 County Road 54
Longville MN 56655



website: www.AffinityRealEstate.com | email: info@affinityrealestate.com | office: 218-237-3333 | fax:218-237-3377

Affinity
REAL ESTATE INC

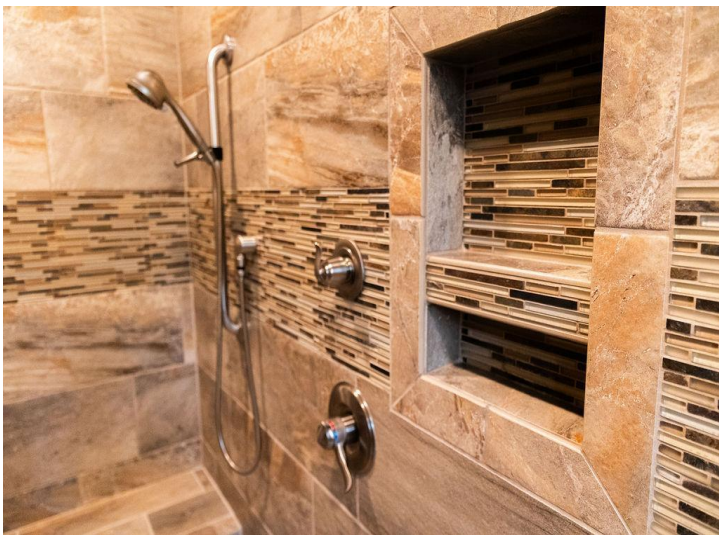
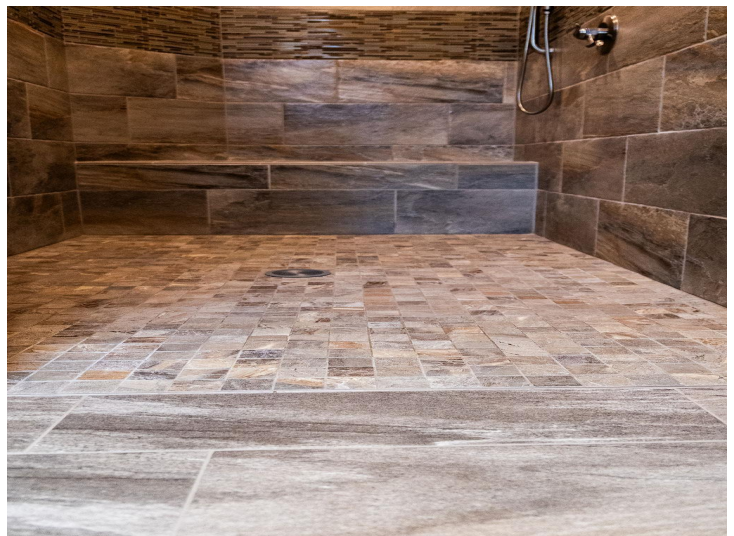
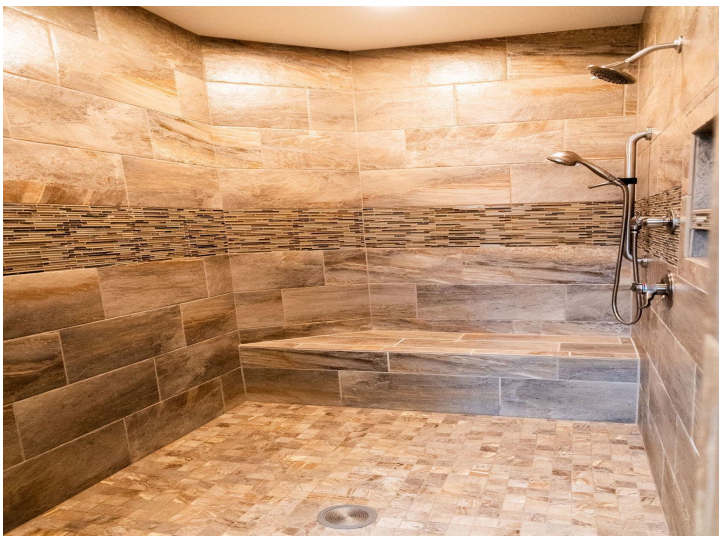
\$1,300,000
MLS 6532045 Lake Home
3830 County Road 54
Longville MN 56655



website: www.AffinityRealEstate.com | email: info@affinityrealestate.com | office: 218-237-3333 | fax:218-237-3377



\$1,300,000
MLS 6532045 Lake Home
3830 County Road 54
Longville MN 56655



website: www.AffinityRealEstate.com | email: info@affinityrealestate.com | office: 218-237-3333 | fax: 218-237-3377

Affinity
REAL ESTATE INC

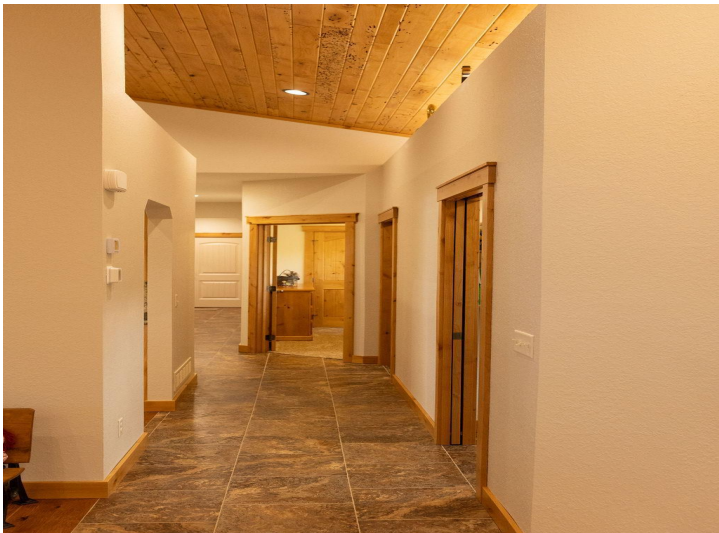
\$1,300,000
MLS 6532045 Lake Home
3830 County Road 54
Longville MN 56655



website: www.AffinityRealEstate.com | email: info@affinityrealestate.com | office: 218-237-3333 | fax:218-237-3377

Affinity
REAL ESTATE INC

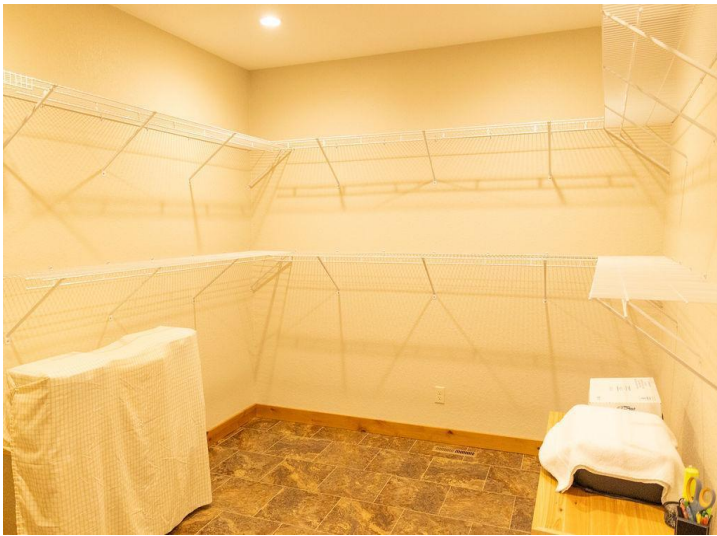
\$1,300,000
MLS 6532045 Lake Home
3830 County Road 54
Longville MN 56655



website: www.AffinityRealEstate.com | email: info@affinityrealestate.com | office: 218-237-3333 | fax:218-237-3377

Affinity
REAL ESTATE INC

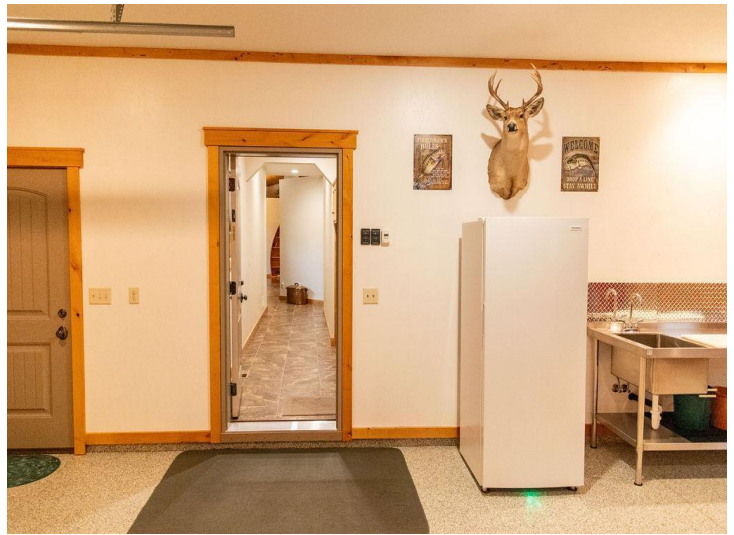
\$1,300,000
MLS 6532045 Lake Home
3830 County Road 54
Longville MN 56655



website: www.AffinityRealEstate.com | email: info@affinityrealestate.com | office: 218-237-3333 | fax:218-237-3377

Affinity
REAL ESTATE INC

\$1,300,000
MLS 6532045 Lake Home
3830 County Road 54
Longville MN 56655



website: www.AffinityRealEstate.com | email: info@affinityrealestate.com | office: 218-237-3333 | fax:218-237-3377

Affinity
REAL ESTATE INC

\$1,300,000
MLS 6532045 Lake Home
3830 County Road 54
Longville MN 56655



website: www.AffinityRealEstate.com | email: info@affinityrealestate.com | office: 218-237-3333 | fax:218-237-3377

Affinity
REAL ESTATE INC

\$1,300,000
MLS 6532045 Lake Home
3830 County Road 54
Longville MN 56655