



MLS 6532284 Lake Home

**\$399,900**

1,502 sq ft  
2 bedrooms  
2 baths

24886 Hooligan Trail  
Park Rapids MN 56470

Waterfront: Lower Bottle

Status: Pending

**Description:**

Lower Bottle Lake Home with 283' level shoreline on 4.53 acres awaits you! A comfortable 2-bedroom, 1 bath (with an additional 3/4 bath that's finished and just needs to be hooked up to the plumbing) is ready for enjoyment. The detached garage with workshop, and lots of storage for the toys is a bonus...not to mention this is all on peaceful tree studded acreage offering blissful privacy in a naturesque setting. Plus, the Lake has excellent fishing and you can get into and explore the other connected Upper Bottle Lake, Emma Lake and Big Sand Lake. Here's the perfect place to get away to relax and relish all the simple pleasures in life.

**Additional Details:**

Year Built	1964
Lot Acres	4.53
Lot Dimensions	283x405x343x486
Garage Stalls	2
School District	309
Taxes	\$2,596
Taxes with Assessments	\$2,806
Tax Year	2024

**Additional Features:**

**Basement:** Crawl Space **Fuel:** Electric, Propane, Wood **Garage:** 2 **Heat:** Baseboard, Forced Air, Fireplace(s) **Sewer:** Mound Septic, Septic System Compliant - Yes **Water:** Private, Sand Point, Well **Air Conditioning:** Central Air

**Driving Directions:**

From Dorset go North on 7 to left on 40 to right on Hope Drive to left on Holligan Trail. Follow back and stay left to sign and the end.



Listed By:  
Kurilla Real Estate LTD

Affinity Real Estate Inc. participates in the Regional Multiple Listing Service of Minnesota, Inc Broker Reciprocity (sm) program, allowing us to display other broker's listings on our website. All properties are subject to prior sale, change or withdrawal.



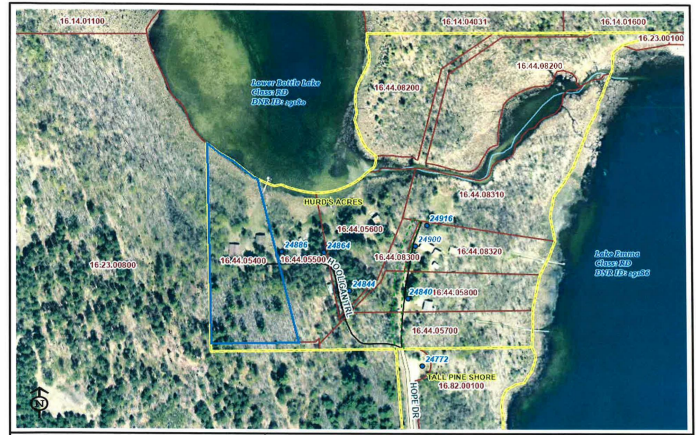
**Call Affinity Real Estate**

**218-237-3333**

**info@affinityrealestate.com**



**Affinity Real Estate - 600 Park Avenue South - Park Rapids MN 56470**



Parcel Viewer  
 Hubbard County - 301 Court Ave, Park Rapids, MN 56470  
 Created 5/7/2024 at 03:40 PM



website: [www.AffinityRealEstate.com](http://www.AffinityRealEstate.com) | email: [info@affinityrealestate.com](mailto:info@affinityrealestate.com) | office: 218-237-3333 | fax: 218-237-3377



**\$399,900**  
 MLS 6532284 Lake Home  
 24886 Hooligan Trail  
 Park Rapids MN 56470



website: [www.AffinityRealEstate.com](http://www.AffinityRealEstate.com) | email: [info@affinityrealestate.com](mailto:info@affinityrealestate.com) | office: 218-237-3333 | fax:218-237-3377

**Affinity**  
REAL ESTATE INC

**\$399,900**  
MLS 6532284 Lake Home  
24886 Hooligan Trail  
Park Rapids MN 56470



website: [www.AffinityRealEstate.com](http://www.AffinityRealEstate.com) | email: [info@affinityrealestate.com](mailto:info@affinityrealestate.com) | office: 218-237-3333 | fax:218-237-3377

**Affinity**  
REAL ESTATE INC

**\$399,900**  
MLS 6532284 Lake Home  
24886 Hooligan Trail  
Park Rapids MN 56470



website: [www.AffinityRealEstate.com](http://www.AffinityRealEstate.com) | email: [info@affinityrealestate.com](mailto:info@affinityrealestate.com) | office: 218-237-3333 | fax:218-237-3377



**\$399,900**  
MLS 6532284 Lake Home  
24886 Hooligan Trail  
Park Rapids MN 56470



website: [www.AffinityRealEstate.com](http://www.AffinityRealEstate.com) | email: [info@affinityrealestate.com](mailto:info@affinityrealestate.com) | office: 218-237-3333 | fax:218-237-3377



**\$399,900**  
MLS 6532284 Lake Home  
24886 Hooligan Trail  
Park Rapids MN 56470