

MLS 6532776 Land

\$190,000

60.35 Acres
Raw Land

60.35 AC Wise Road
Brainerd MN 56401

Status: Active

Description:

Sizable residential parcel located along Wise Road (CR 49) in Brainerd, near the Beaver Dam Road round-a-bout intersection. Property offers an investment opportunity for residential developers or a private residence with ample acreage. This quiet country location has access to the Paul Bunyan Trail nearby, and is just minutes to schools, places of worship, retail, restaurants, entertainment, and more.

Additional Details:

Lot Acres	60.35
Lot Dimensions	1,322.08' x 1,972.91' x 1,336.39' x 1,973.07'
School District	181
Taxes	\$182
Taxes with Assessments	\$182
Tax Year	2024

Additional Features:

Driving Directions:

From the Baxter Hwy 371 / Hwy 210 stoplight intersection - North on Hwy 371 - East on Wise Road (CR 49) - Property is located on the West side of Wise Road (CR 49) just after the Beaver Dam Road round-a-bout intersection



Listed By:
Close-Converse Commercial Prop

Affinity Real Estate Inc. participates in the Regional Multiple Listing Service of Minnesota, Inc Broker Reciprocity (sm) program, allowing us to display other broker's listings on our website. All properties are subject to prior sale, change or withdrawal.



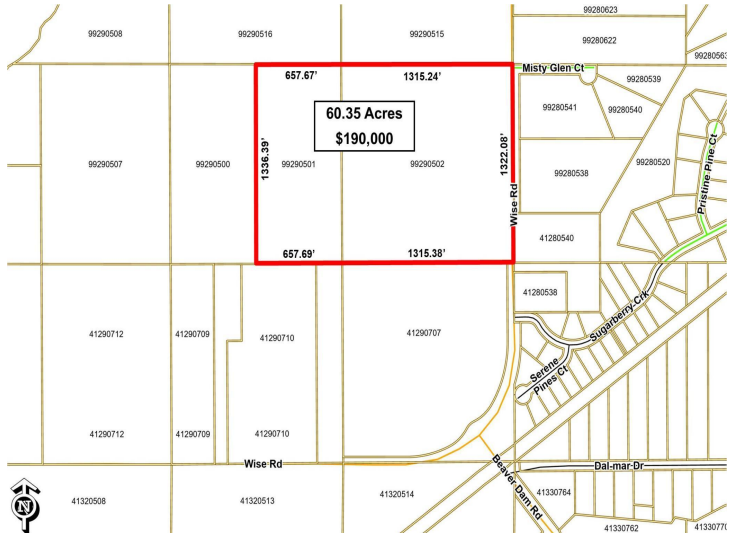
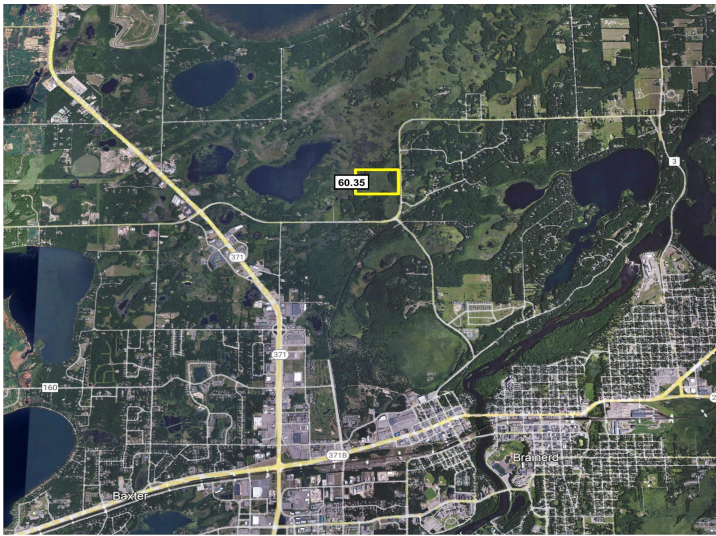
Call Affinity Real Estate

218-237-3333

info@affinityrealestate.com



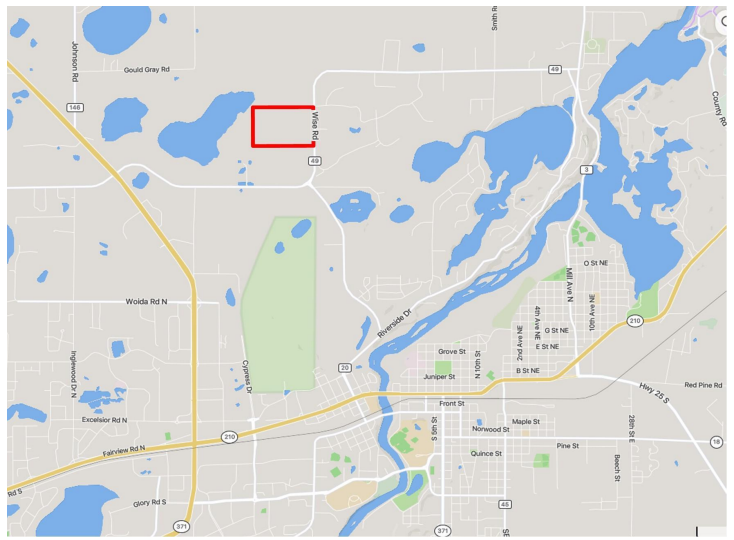
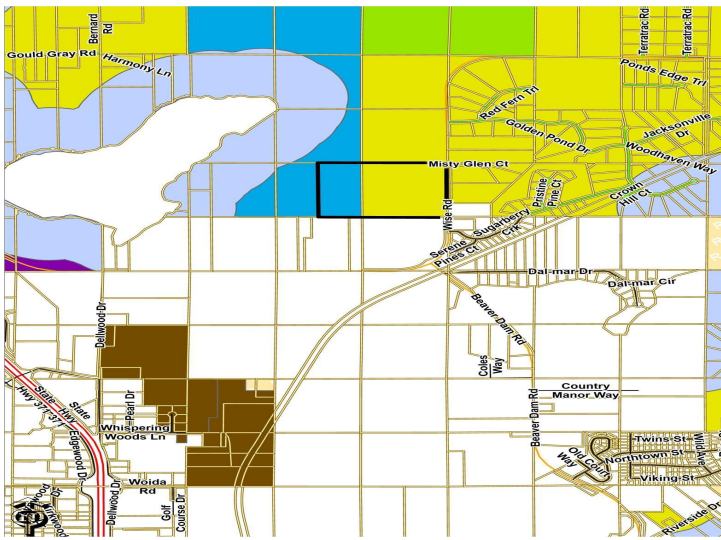
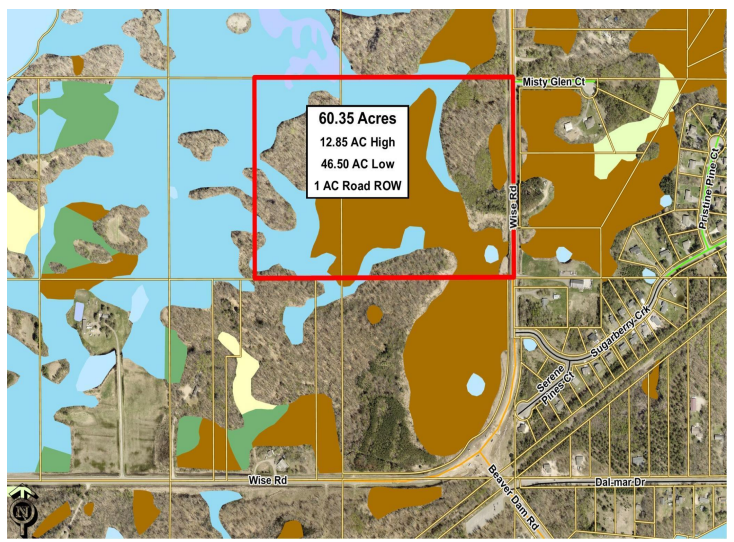
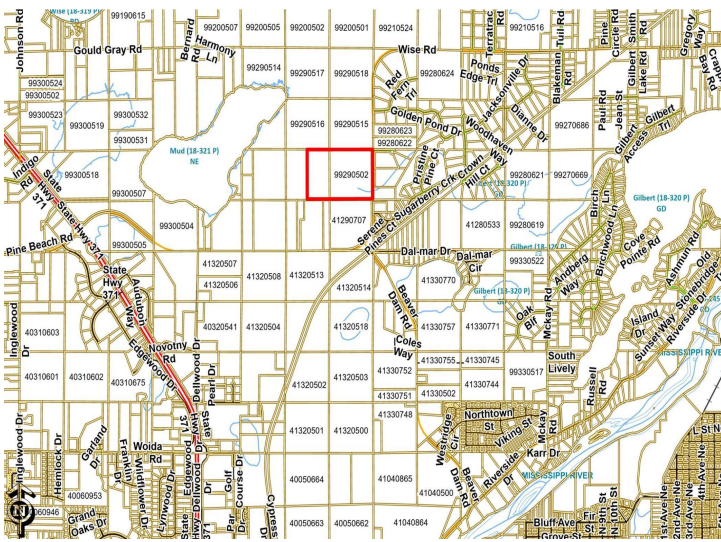
Affinity Real Estate - 600 Park Avenue South - Park Rapids MN 56470



website: www.AffinityRealEstate.com | email: info@affinityrealestate.com | office: 218-237-3333 | fax: 218-237-3377



\$190,000
 MLS 6532776 Land
 60.35 AC Wise Road
 Brainerd MN 56401



website: www.AffinityRealEstate.com | email: info@affinityrealestate.com | office: 218-237-3333 | fax: 218-237-3377



\$190,000
 MLS 6532776 Land
 60.35 AC Wise Road
 Brainerd MN 56401