



MLS 6532998 Lake Home

**\$250,000**

936 sq ft  
2 bedrooms  
2 baths

14590 Gazebo Drive  
Park Rapids MN 56470

Waterfront: Potato

Status: Active

**Description:**

Welcome to North Beach on beautiful Potato Lake just north of Park Rapids! This year round 2 bed, 2 bath condo is an end unit and has been kept in pristine condition. It is move-in ready with everything in the house included in the sale. Stay comfortable with electric baseboard heat, a cozy fireplace and a mini-split to cool you off on those extra warm days. The North Beach association handles all the yard work so you can enjoy the amenities that include a dock with your own boat slip, a great sand beach, indoor pool, playground and sand volleyball. The Potato Lake chain is over 3000 acres and filled with some of the best fishing and boating the area has to offer. Setup your showing today and enjoy this summer by relaxing in your new North Beach condo!

**Additional Details:**


Year Built	1978
Lot Acres	0.01
Lot Dimensions	18.5x26
School District	309
Taxes	\$1,244
Taxes with Assessments	\$1,454
Tax Year	2024

**Additional Features:**

**Fuel:** Electric **Heat:** Baseboard

**Driving Directions:**

From Park Rapids: go North on Hwy 71 to a right on 230th St. Follow to a left on 141st Ave and continue to a right on Gazebo Dr. Proceed to North Beach Resort. 2nd building contains unit #9

 Listed By:  
Keller Williams Realty Professionals

Affinity Real Estate Inc. participates in the Regional Multiple Listing Service of Minnesota, Inc Broker Reciprocity (sm) program, allowing us to display other broker's listings on our website. All properties are subject to prior sale, change or withdrawal.



**Call Affinity Real Estate**

**218-237-3333**

**info@affinityrealestate.com**



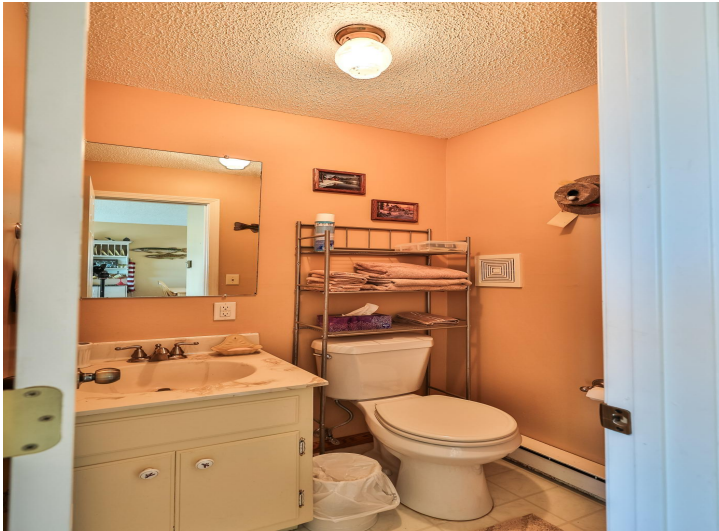
**Affinity Real Estate - 600 Park Avenue South - Park Rapids MN 56470**



website: [www.AffinityRealEstate.com](http://www.AffinityRealEstate.com) | email: [info@affinityrealestate.com](mailto:info@affinityrealestate.com) | office: 218-237-3333 | fax:218-237-3377



**\$250,000**  
MLS 6532998 Lake Home  
14590 Gazebo Drive  
Park Rapids MN 56470



website: [www.AffinityRealEstate.com](http://www.AffinityRealEstate.com) | email: [info@affinityrealestate.com](mailto:info@affinityrealestate.com) | office: 218-237-3333 | fax:218-237-3377



**\$250,000**  
MLS 6532998 Lake Home  
14590 Gazebo Drive  
Park Rapids MN 56470



website: [www.AffinityRealEstate.com](http://www.AffinityRealEstate.com) | email: [info@affinityrealestate.com](mailto:info@affinityrealestate.com) | office: 218-237-3333 | fax:218-237-3377

**Affinity**  
REAL ESTATE INC

**\$250,000**  
MLS 6532998 Lake Home  
14590 Gazebo Drive  
Park Rapids MN 56470



website: [www.AffinityRealEstate.com](http://www.AffinityRealEstate.com) | email: [info@affinityrealestate.com](mailto:info@affinityrealestate.com) | office: 218-237-3333 | fax: 218-237-3377

**Affinity**  
REAL ESTATE INC

**\$250,000**  
MLS 6532998 Lake Home  
14590 Gazebo Drive  
Park Rapids MN 56470



website: [www.AffinityRealEstate.com](http://www.AffinityRealEstate.com) | email: [info@affinityrealestate.com](mailto:info@affinityrealestate.com) | office: 218-237-3333 | fax:218-237-3377

**Affinity**  
REAL ESTATE INC

**\$250,000**  
MLS 6532998 Lake Home  
14590 Gazebo Drive  
Park Rapids MN 56470



website: [www.AffinityRealEstate.com](http://www.AffinityRealEstate.com) | email: [info@affinityrealestate.com](mailto:info@affinityrealestate.com) | office: 218-237-3333 | fax:218-237-3377



**\$250,000**  
MLS 6532998 Lake Home  
14590 Gazebo Drive  
Park Rapids MN 56470