



MLS 6533013 Residential

**\$1,380,000**

3,830 sq ft  
4 bedrooms  
4 baths

25395 County Highway 6  
Detroit Lakes MN 56501

Status: Active

**Description:**

30 acres in a prime location and so many possibilities. This property has a beautiful home, commercial shop, multiple outbuildings, including 2 large pole buildings. Boasting a large yard with a creek running along the property. The home offers, main level laundry, office/bonus room, large primary suite, cozy kitchen/dining/living area with natural gas fireplace, hickory woodfloors, cork flooring in the kitchen and so much more. The primary suite has it's own sitting room, 2 bathrooms, heated soaking tub, and multiple walk-in closets. The walk out basement has a separate living space with its own bathroom, laundry, and bonus room, kitchen/dinning/living area with a natural gas fireplace. The kitchen has granite countertops, Hickory woodwork and flooring. The basement also has 2 bedrooms for you to put your finishing touches on. The commercial shop 40 X 80 with two 14' tall garage doors, commercial garage door openers, office, full bathroom, 16' side walls.

**Additional Details:**

Year Built	2008
Lot Acres	30
Lot Dimensions	Acres
Garage Stalls	3
School District	22
Taxes	\$4,772
Taxes with Assessments	\$4,772
Tax Year	2023

**Additional Features:**

**Basement:** Daylight/Lookout Windows, Drain Tiled, Egress Window(s), Finished, Insulating Concrete Forms, Concrete, Partially Finished, Single Tenant Access, Walkout **Fuel:** Natural Gas, Wood **Garage:** 3 **Heat:** Boiler, Fireplace(s), Radiant Floor, Wood Stove **Sewer:** Tank with Drainage Field **Water:** Well **Air Conditioning:** Central Air

**Driving Directions:**

25395 Co Hwy 6 Detroit Lakes



Listed By:  
RE/MAX LAKES REGION

Affinity Real Estate Inc. participates in the Regional Multiple Listing Service of Minnesota, Inc Broker Reciprocity (sm) program, allowing us to display other broker's listings on our website. All properties are subject to prior sale, change or withdrawal.



Call Affinity Real Estate

**218-237-3333**

[info@affinityrealestate.com](mailto:info@affinityrealestate.com)



Affinity Real Estate - 600 Park Avenue South - Park Rapids MN 56470



website: [www.AffinityRealEstate.com](http://www.AffinityRealEstate.com) | email: [info@affinityrealestate.com](mailto:info@affinityrealestate.com) | office: 218-237-3333 | fax:218-237-3377



**\$1,380,000**  
MLS 6533013 Residential  
25395 County Highway 6  
Detroit Lakes MN 56501



website: [www.AffinityRealEstate.com](http://www.AffinityRealEstate.com) | email: [info@affinityrealestate.com](mailto:info@affinityrealestate.com) | office: 218-237-3333 | fax:218-237-3377

**Affinity**  
REAL ESTATE INC

**\$1,380,000**  
MLS 6533013 Residential  
25395 County Highway 6  
Detroit Lakes MN 56501



website: [www.AffinityRealEstate.com](http://www.AffinityRealEstate.com) | email: [info@affinityrealestate.com](mailto:info@affinityrealestate.com) | office: 218-237-3333 | fax:218-237-3377



**\$1,380,000**  
MLS 6533013 Residential  
25395 County Highway 6  
Detroit Lakes MN 56501



website: [www.AffinityRealEstate.com](http://www.AffinityRealEstate.com) | email: [info@affinityrealestate.com](mailto:info@affinityrealestate.com) | office: 218-237-3333 | fax:218-237-3377

**Affinity**  
REAL ESTATE INC

**\$1,380,000**  
MLS 6533013 Residential  
25395 County Highway 6  
Detroit Lakes MN 56501



website: [www.AffinityRealEstate.com](http://www.AffinityRealEstate.com) | email: [info@affinityrealestate.com](mailto:info@affinityrealestate.com) | office: 218-237-3333 | fax:218-237-3377

**Affinity**  
REAL ESTATE INC

**\$1,380,000**  
MLS 6533013 Residential  
25395 County Highway 6  
Detroit Lakes MN 56501



website: [www.AffinityRealEstate.com](http://www.AffinityRealEstate.com) | email: [info@affinityrealestate.com](mailto:info@affinityrealestate.com) | office: 218-237-3333 | fax:218-237-3377

**Affinity**  
REAL ESTATE INC

**\$1,380,000**  
MLS 6533013 Residential  
25395 County Highway 6  
Detroit Lakes MN 56501



website: [www.AffinityRealEstate.com](http://www.AffinityRealEstate.com) | email: [info@affinityrealestate.com](mailto:info@affinityrealestate.com) | office: 218-237-3333 | fax: 218-237-3377

**Affinity**  
REAL ESTATE INC

**\$1,380,000**  
MLS 6533013 Residential  
25395 County Highway 6  
Detroit Lakes MN 56501





website: [www.AffinityRealEstate.com](http://www.AffinityRealEstate.com) | email: [info@affinityrealestate.com](mailto:info@affinityrealestate.com) | office: 218-237-3333 | fax:218-237-3377



**\$1,380,000**  
MLS 6533013 Residential  
25395 County Highway 6  
Detroit Lakes MN 56501



website: [www.AffinityRealEstate.com](http://www.AffinityRealEstate.com) | email: [info@affinityrealestate.com](mailto:info@affinityrealestate.com) | office: 218-237-3333 | fax: 218-237-3377

**Affinity**  
REAL ESTATE INC

**\$1,380,000**  
MLS 6533013 Residential  
25395 County Highway 6  
Detroit Lakes MN 56501



website: [www.AffinityRealEstate.com](http://www.AffinityRealEstate.com) | email: [info@affinityrealestate.com](mailto:info@affinityrealestate.com) | office: 218-237-3333 | fax:218-237-3377



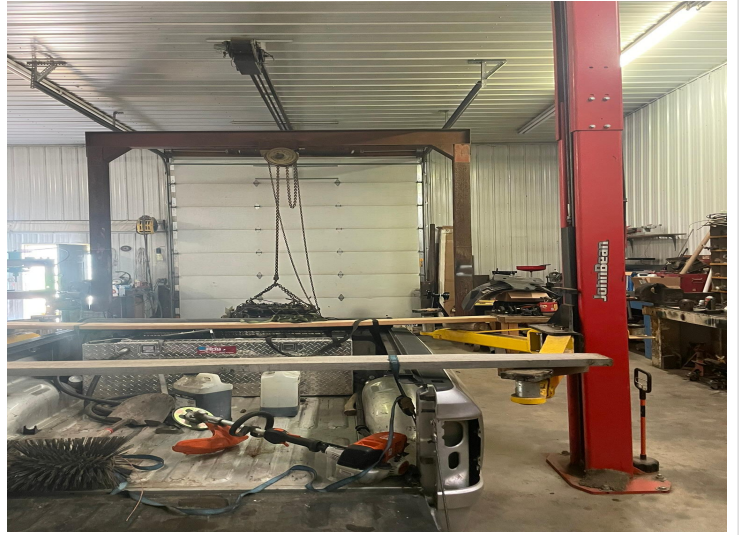
**\$1,380,000**  
MLS 6533013 Residential  
25395 County Highway 6  
Detroit Lakes MN 56501



website: [www.AffinityRealEstate.com](http://www.AffinityRealEstate.com) | email: [info@affinityrealestate.com](mailto:info@affinityrealestate.com) | office: 218-237-3333 | fax: 218-237-3377

**Affinity**  
REAL ESTATE INC

**\$1,380,000**  
MLS 6533013 Residential  
25395 County Highway 6  
Detroit Lakes MN 56501



website: [www.AffinityRealEstate.com](http://www.AffinityRealEstate.com) | email: [info@affinityrealestate.com](mailto:info@affinityrealestate.com) | office: 218-237-3333 | fax: 218-237-3377

**Affinity**  
REAL ESTATE INC

**\$1,380,000**  
MLS 6533013 Residential  
25395 County Highway 6  
Detroit Lakes MN 56501



website: [www.AffinityRealEstate.com](http://www.AffinityRealEstate.com) | email: [info@affinityrealestate.com](mailto:info@affinityrealestate.com) | office: 218-237-3333 | fax:218-237-3377



**\$1,380,000**  
MLS 6533013 Residential  
25395 County Highway 6  
Detroit Lakes MN 56501



website: [www.AffinityRealEstate.com](http://www.AffinityRealEstate.com) | email: [info@affinityrealestate.com](mailto:info@affinityrealestate.com) | office: 218-237-3333 | fax:218-237-3377



**\$1,380,000**  
MLS 6533013 Residential  
25395 County Highway 6  
Detroit Lakes MN 56501



website: [www.AffinityRealEstate.com](http://www.AffinityRealEstate.com) | email: [info@affinityrealestate.com](mailto:info@affinityrealestate.com) | office: 218-237-3333 | fax:218-237-3377

**Affinity**  
REAL ESTATE INC

**\$1,380,000**  
MLS 6533013 Residential  
25395 County Highway 6  
Detroit Lakes MN 56501