



MLS 6533398 Land

\$42,500

1.74 Square Feet
Raw Land

xxxx5 401St Avenue
Perham MN 56573

Status: Active

Description:

Lot 5 Block 2, Great lot with a pond/marsh view. Build the Tiny home of your dreams. Sheds and Shouse are welcome also. Road will be Tarded at the developers expense. Great rural location. Bike Trail from Perham to Maplewood State Park is adjacent.

Additional Details:

Lot Acres	1.74
Lot Dimensions	212x280
School District	549
Taxes	\$96
Taxes with Assessments	\$96
Tax Year	2024

Additional Features:

Driving Directions:

West of Perham on 34 to 400th north to first right 441 st then left on 401 ave property on right.



Listed By:
New Horizons Realty of Perham

Affinity Real Estate Inc. participates in the Regional Multiple Listing Service of Minnesota, Inc Broker Reciprocity (sm) program, allowing us to display other broker's listings on our website. All properties are subject to prior sale, change or withdrawal.



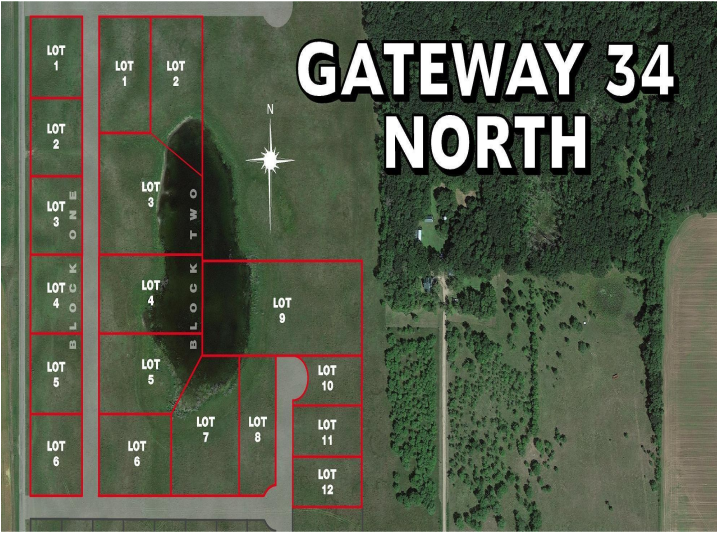
Call Affinity Real Estate

218-237-3333

info@affinityrealestate.com



Affinity Real Estate - 600 Park Avenue South - Park Rapids MN 56470



website: www.AffinityRealEstate.com | email: info@affinityrealestate.com | office: 218-237-3333 | fax:218-237-3377



\$42,500
MLS 6533398 Land
xxxx5 401St Avenue
Perham MN 56573