



MLS 6534220 Lake Land

**\$99,000**

**Description:**

Beautiful building sites with stunning sunset views over Mayo Lake. Each lot comes with 1/5th ownership in the lake access lot, which provides easy access to the lake with over 5 acres land and nearly 600' of shoreline that includes established walking trails, a picnic area, firepit, swimming beach, and a place to install your private dock and boat lift. Located in the heart of the Beautiful Brainerd Lakes Area!

**Additional Details:**

|                        |                 |
|------------------------|-----------------|
| Lot Acres              | 1.1             |
| Lot Dimensions         | 111x495x126x467 |
| School District        | 186             |
| Taxes                  | \$92            |
| Taxes with Assessments | \$92            |
| Tax Year               | 2024            |

**Additional Features:**

**Driving Directions:**

From Nisswa, north on hwy 371 to County Road 168 to left at Hurtig Rd to sign and property on the right.



Listed By:  
Kurilla Real Estate LTD

Affinity Real Estate Inc. participates in the Regional Multiple Listing Service of Minnesota, Inc Broker Reciprocity (sm) program, allowing us to display other broker's listings on our website. All properties are subject to prior sale, change or withdrawal.



**Call Affinity Real Estate**

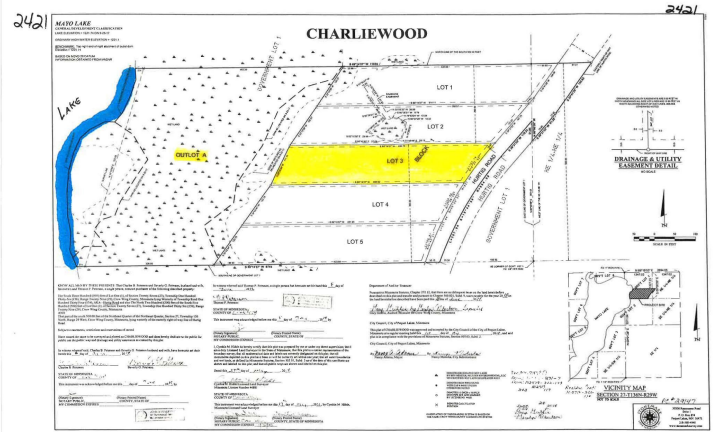
**218-237-3333**

**info@affinityrealestate.com**



**Affinity Real Estate - 600 Park Avenue South - Park Rapids MN 56470**





website: [www.AffinityRealEstate.com](http://www.AffinityRealEstate.com) | email: [info@affinityrealestate.com](mailto:info@affinityrealestate.com) | office: 218-237-3333 | fax:218-237-3377



**\$99,000**  
 MLS 6534220 Lake Land  
 TBD - Lot 3 Hurtig Road  
 Pequot Lakes MN 56472



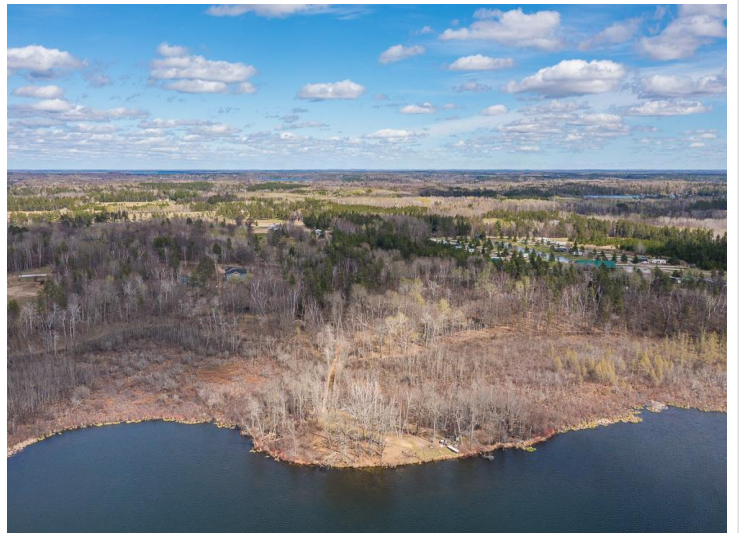
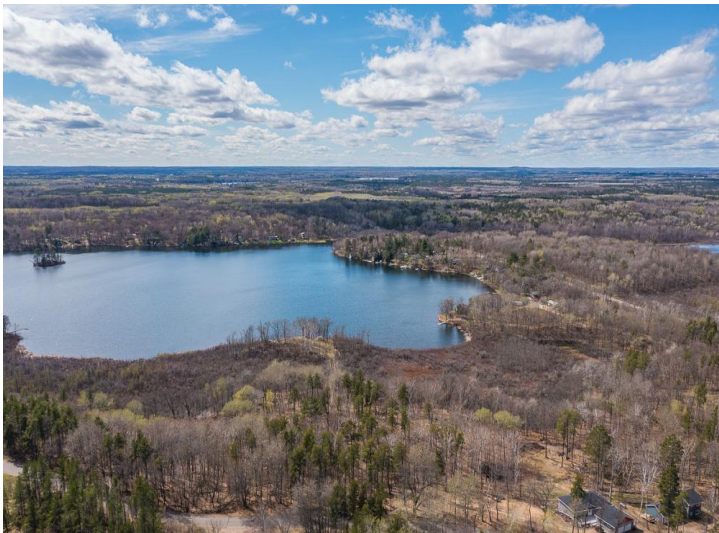


website: [www.AffinityRealEstate.com](http://www.AffinityRealEstate.com) | email: [info@affinityrealestate.com](mailto:info@affinityrealestate.com) | office: 218-237-3333 | fax:218-237-3377



**\$99,000**  
MLS 6534220 Lake Land  
TBD - Lot 3 Hurtig Road  
Pequot Lakes MN 56472



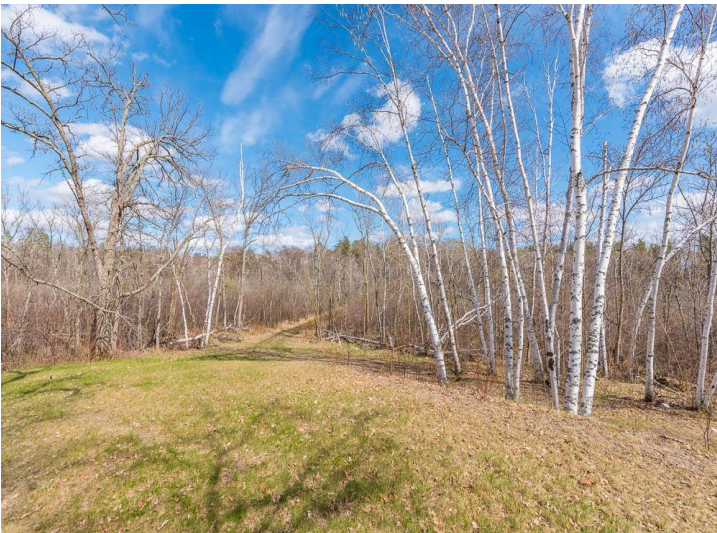


website: [www.AffinityRealEstate.com](http://www.AffinityRealEstate.com) | email: [info@affinityrealestate.com](mailto:info@affinityrealestate.com) | office: 218-237-3333 | fax:218-237-3377



**\$99,000**  
MLS 6534220 Lake Land  
TBD - Lot 3 Hurtig Road  
Pequot Lakes MN 56472





website: [www.AffinityRealEstate.com](http://www.AffinityRealEstate.com) | email: [info@affinityrealestate.com](mailto:info@affinityrealestate.com) | office: 218-237-3333 | fax:218-237-3377



**\$99,000**  
MLS 6534220 Lake Land  
TBD - Lot 3 Hurtig Road  
Pequot Lakes MN 56472