



MLS 6534421 Lake Home

\$1,150,000

3,200 sq ft
4 bedrooms
3 baths

616 Shorewood Drive
Detroit Lakes MN 56501

Waterfront: Detroit

Status: Active

Description:

2 story, 4 bedroom, 3 bath home on the sandy shores of City View Beach on Little Detroit Lake. The home sits on just under a half acre lot with 112 feet of frontage. Property is connected to city water and sewer and also comes with ownership in the Shorewood Rec Club consisting of a tennis/pickleball court and basketball court.

Additional Details:

Year Built	1971
Lot Acres	0.49
Lot Dimensions	112' x 190'
Garage Stalls	2
School District	22
Taxes	\$10,278
Taxes with Assessments	\$10,278
Tax Year	2024

Additional Features:

Fuel: Electric **Heat:** Baseboard

Driving Directions:

Hwy 59 South to County Road 6, turn left. Go straight until West Lake Drive. Turn Right. Straight until Long Bridge Road. Turn Left. Straight until Shorewood Drive. Turn Left. Turn Left at 616 Shorewood Drive



Listed By:
HomeSmart Adventure Realty

Affinity Real Estate Inc. participates in the Regional Multiple Listing Service of Minnesota, Inc Broker Reciprocity (sm) program, allowing us to display other broker's listings on our website. All properties are subject to prior sale, change or withdrawal.



Call Affinity Real Estate

218-237-3333

info@affinityrealestate.com



Affinity Real Estate - 600 Park Avenue South - Park Rapids MN 56470



website: www.AffinityRealEstate.com | email: info@affinityrealestate.com | office: 218-237-3333 | fax:218-237-3377



\$1,150,000
MLS 6534421 Lake Home
616 Shorewood Drive
Detroit Lakes MN 56501



website: www.AffinityRealEstate.com | email: info@affinityrealestate.com | office: 218-237-3333 | fax:218-237-3377

Affinity
REAL ESTATE INC

\$1,150,000
MLS 6534421 Lake Home
616 Shorewood Drive
Detroit Lakes MN 56501



website: www.AffinityRealEstate.com | email: info@affinityrealestate.com | office: 218-237-3333 | fax:218-237-3377

Affinity
REAL ESTATE INC

\$1,150,000
MLS 6534421 Lake Home
616 Shorewood Drive
Detroit Lakes MN 56501



website: www.AffinityRealEstate.com | email: info@affinityrealestate.com | office: 218-237-3333 | fax:218-237-3377

Affinity
REAL ESTATE INC

\$1,150,000
MLS 6534421 Lake Home
616 Shorewood Drive
Detroit Lakes MN 56501



website: www.AffinityRealEstate.com | email: info@affinityrealestate.com | office: 218-237-3333 | fax: 218-237-3377

Affinity
REAL ESTATE INC

\$1,150,000
MLS 6534421 Lake Home
616 Shorewood Drive
Detroit Lakes MN 56501



website: www.AffinityRealEstate.com | email: info@affinityrealestate.com | office: 218-237-3333 | fax:218-237-3377

Affinity
REAL ESTATE INC

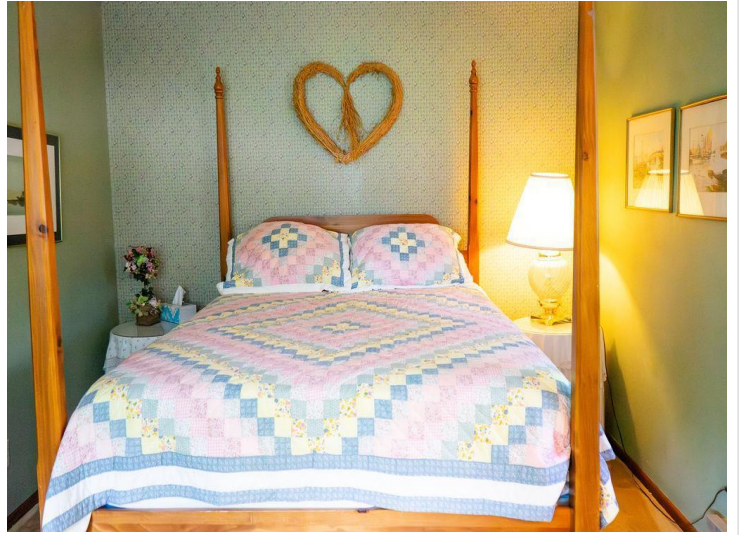
\$1,150,000
MLS 6534421 Lake Home
616 Shorewood Drive
Detroit Lakes MN 56501



website: www.AffinityRealEstate.com | email: info@affinityrealestate.com | office: 218-237-3333 | fax:218-237-3377

Affinity
REAL ESTATE INC

\$1,150,000
MLS 6534421 Lake Home
616 Shorewood Drive
Detroit Lakes MN 56501



website: www.AffinityRealEstate.com | email: info@affinityrealestate.com | office: 218-237-3333 | fax:218-237-3377



\$1,150,000
MLS 6534421 Lake Home
616 Shorewood Drive
Detroit Lakes MN 56501