



MLS 6534650 Residential

**\$449,500**

3,800 sq ft  
3 bedrooms  
3 baths

30272 County Highway 61  
Henning MN 56551

Status: Active

**Description:**

Welcome to your own private oasis on this beautiful Hobby Farm! Situated on 10 acres of land, this well-built house is perfect for any nature lover or equestrian enthusiast. The property features two horse barns, a storage shed, and a massive 4000 square foot Quonset for all of your storage needs. Quiet rural setting with all the amenities of Henning & Ottertail within minutes of your front door. Don't miss out on the opportunity to make this serene retreat your new home!

**Additional Details:**

Year Built	2004
Lot Acres	10
Lot Dimensions	360x1300
Garage Stalls	2
School District	545
Taxes	\$4,376
Taxes with Assessments	\$4,376
Tax Year	2024

**Additional Features:**

Fuel: Other Heat: Radiant Floor

**Driving Directions:**

From Ottertail, head east on highway 108. Take a right on highway 61. Property will be on left shortly after the Portage lake access. Look for blue sign.



Listed By:  
Boll Realty

Affinity Real Estate Inc. participates in the Regional Multiple Listing Service of Minnesota, Inc Broker Reciprocity (sm) program, allowing us to display other broker's listings on our website. All properties are subject to prior sale, change or withdrawal.



Call Affinity Real Estate

**218-237-3333**

[info@affinityrealestate.com](mailto:info@affinityrealestate.com)



Affinity Real Estate - 600 Park Avenue South - Park Rapids MN 56470



website: [www.AffinityRealEstate.com](http://www.AffinityRealEstate.com) | email: [info@affinityrealestate.com](mailto:info@affinityrealestate.com) | office: 218-237-3333 | fax:218-237-3377

**Affinity**  
REAL ESTATE INC

**\$449,500**  
MLS 6534650 Residential  
30272 County Highway 61  
Henning MN 56551



website: [www.AffinityRealEstate.com](http://www.AffinityRealEstate.com) | email: [info@affinityrealestate.com](mailto:info@affinityrealestate.com) | office: 218-237-3333 | fax:218-237-3377



**\$449,500**  
MLS 6534650 Residential  
30272 County Highway 61  
Henning MN 56551



website: [www.AffinityRealEstate.com](http://www.AffinityRealEstate.com) | email: [info@affinityrealestate.com](mailto:info@affinityrealestate.com) | office: 218-237-3333 | fax:218-237-3377



**\$449,500**  
MLS 6534650 Residential  
30272 County Highway 61  
Henning MN 56551



website: [www.AffinityRealEstate.com](http://www.AffinityRealEstate.com) | email: [info@affinityrealestate.com](mailto:info@affinityrealestate.com) | office: 218-237-3333 | fax:218-237-3377



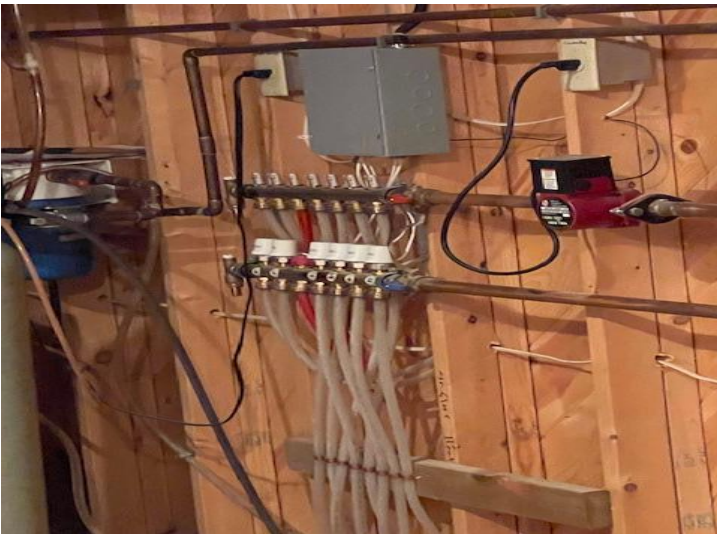
**\$449,500**  
MLS 6534650 Residential  
30272 County Highway 61  
Henning MN 56551



website: [www.AffinityRealEstate.com](http://www.AffinityRealEstate.com) | email: [info@affinityrealestate.com](mailto:info@affinityrealestate.com) | office: 218-237-3333 | fax:218-237-3377



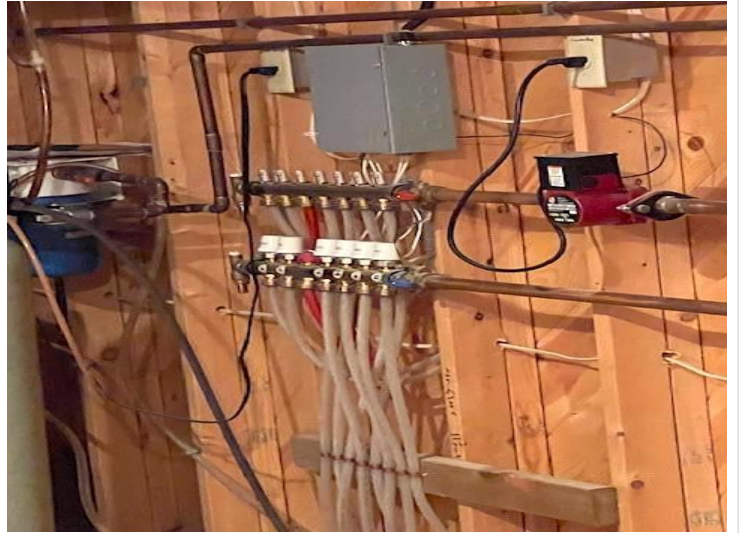
**\$449,500**  
MLS 6534650 Residential  
30272 County Highway 61  
Henning MN 56551



website: [www.AffinityRealEstate.com](http://www.AffinityRealEstate.com) | email: [info@affinityrealestate.com](mailto:info@affinityrealestate.com) | office: 218-237-3333 | fax:218-237-3377

**Affinity**  
REAL ESTATE INC

**\$449,500**  
MLS 6534650 Residential  
30272 County Highway 61  
Henning MN 56551



website: [www.AffinityRealEstate.com](http://www.AffinityRealEstate.com) | email: [info@affinityrealestate.com](mailto:info@affinityrealestate.com) | office: 218-237-3333 | fax:218-237-3377

**Affinity**  
REAL ESTATE INC

**\$449,500**  
MLS 6534650 Residential  
30272 County Highway 61  
Henning MN 56551





website: [www.AffinityRealEstate.com](http://www.AffinityRealEstate.com) | email: [info@affinityrealestate.com](mailto:info@affinityrealestate.com) | office: 218-237-3333 | fax:218-237-3377



**\$449,500**  
MLS 6534650 Residential  
30272 County Highway 61  
Henning MN 56551