



MLS 6535004 Lake Land

\$39,999

Description:

LITTLE FLOYD SHARED ACCESS-YOUR PERFECT PLACE FOR. YOUR NEW SINGLE FAMILY HOME. AMENITIES INCLUDE ACCESS TO CLUBHOUSE WITH HEATED OUTDOOR POOL, 2 DOCK MARINA SYSTEM, LAWN CARE AND SNOW REMOVAL. BOAT SLIPS ARE AVAILABLE TO PURCHASE IF AVAI;ABLE.

Additional Details:

Lot Dimensions	50x70
School District	22
Taxes	\$266
Taxes with Assessments	\$328
Tax Year	2024

Additional Features:

Driving Directions:

FROM DL GO 3 MILES NORTH ON RICHWOOD RD OR CO HWY 21



Listed By:
The Real Estate Company of Detroit Lakes

Affinity Real Estate Inc. participates in the Regional Multiple Listing Service of Minnesota, Inc Broker Reciprocity (sm) program, allowing us to display other broker's listings on our website. All properties are subject to prior sale, change or withdrawal.



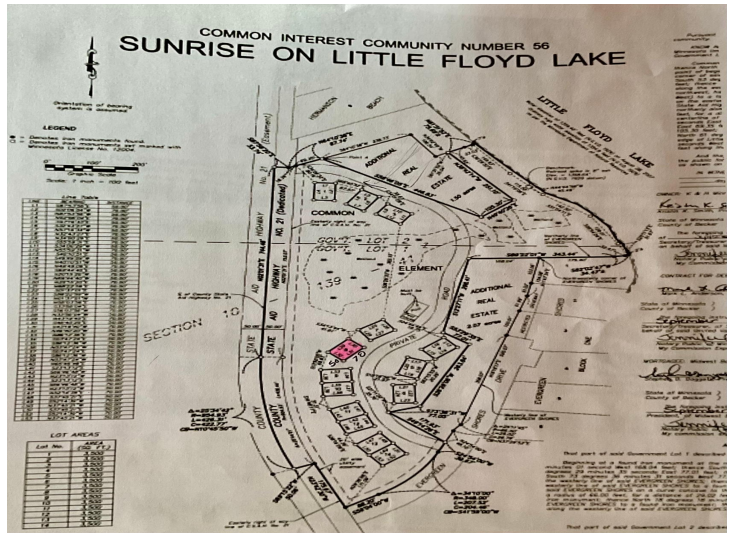
Call Affinity Real Estate

218-237-3333

info@affinityrealestate.com



Affinity Real Estate - 600 Park Avenue South - Park Rapids MN 56470



website: www.AffinityRealEstate.com | email: info@affinityrealestate.com | office: 218-237-3333 | fax:218-237-3377



\$39,999
 MLS 6535004 Lake Land
 20653 Co Hwy 21
 Detroit Lakes MN 56501