



MLS 6535077 Land

\$100,000

20 Acres
Raw Land

24086 191st Avenue
Verndale MN 56481

Status: Active

Description:

Beautiful 20 acre parcel with a great mix of hunting, tillable acres and a camper/building site with electricity and septic already on site! Are you looking for a country retreat? This property is in a great location and checks a lot of boxes on the want list. Excellent deer country with lots of game animals. Seller has the septic and electric infrastructure already on site - come build your dream cabin or pull up the camper to hang out in the quiet part of the world. Set up a showing soon!

Additional Details:

Lot Acres	20
Lot Dimensions	660 x 1320
School District	820
Taxes	\$128
Taxes with Assessments	\$128
Tax Year	2023

Additional Features:

Driving Directions:

From Wadena go north on Hwy 71 then east on Co Rd 9 to sign on north side of the highway. Property located on corner of Hwy 9 and 191st Ave



Listed By:
Central MN Realty LLC

Affinity Real Estate Inc. participates in the Regional Multiple Listing Service of Minnesota, Inc Broker Reciprocity (sm) program, allowing us to display other broker's listings on our website. All properties are subject to prior sale, change or withdrawal.



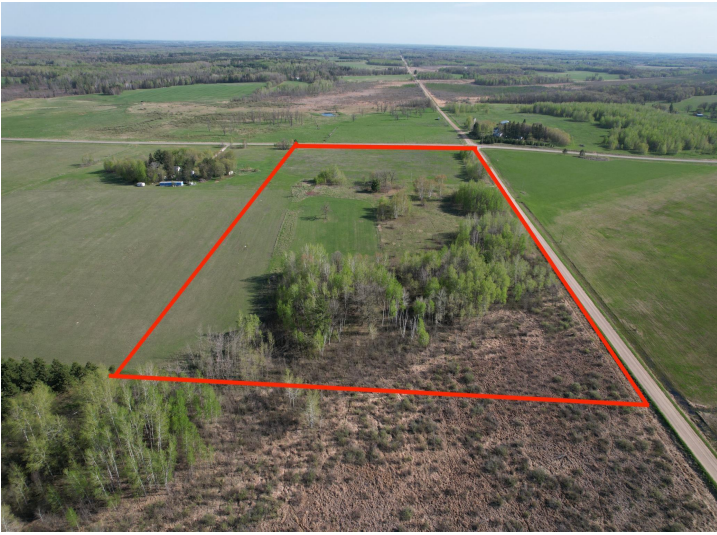
Call Affinity Real Estate

218-237-3333

info@affinityrealestate.com



Affinity Real Estate - 600 Park Avenue South - Park Rapids MN 56470



website: www.AffinityRealEstate.com | email: info@affinityrealestate.com | office: 218-237-3333 | fax:218-237-3377



\$100,000
MLS 6535077 Land
24086 191st Avenue
Verndale MN 56481



website: www.AffinityRealEstate.com | email: info@affinityrealestate.com | office: 218-237-3333 | fax:218-237-3377



\$100,000
MLS 6535077 Land
24086 191st Avenue
Verndale MN 56481



website: www.AffinityRealEstate.com | email: info@affinityrealestate.com | office: 218-237-3333 | fax:218-237-3377



\$100,000
MLS 6535077 Land
24086 191st Avenue
Verndale MN 56481



website: www.AffinityRealEstate.com | email: info@affinityrealestate.com | office: 218-237-3333 | fax:218-237-3377



\$100,000
MLS 6535077 Land
24086 191st Avenue
Verndale MN 56481



website: www.AffinityRealEstate.com | email: info@affinityrealestate.com | office: 218-237-3333 | fax:218-237-3377



\$100,000
MLS 6535077 Land
24086 191st Avenue
Verndale MN 56481