



MLS 6535361 Land

**\$55,000**

2.76 Acres  
Raw Land

xxxx3 401st Avenue  
Perham MN 56573

Status: Active

**Description:**

Beautiful Building site with Pond view. Great location to Perham and surrounding lakes area. Bike Trail from Perham to Maplewood State Park is close by. New road will be Asphalted at the developers expense. No Assessments to buyers. Build a new home, shed or Shouse. Covenants apply but are favorable for these three options.

**Additional Details:**

Lot Acres	2.76
Lot Dimensions	2.76 Acres
School District	549
Taxes	\$120
Taxes with Assessments	\$120
Tax Year	2024

**Additional Features:**

**Driving Directions:**

West of Perham on Hwy 34 to 400th Ave North to 441st St East Then 401st Ave North Property on Right.



Listed By:  
New Horizons Realty of Perham

Affinity Real Estate Inc. participates in the Regional Multiple Listing Service of Minnesota, Inc Broker Reciprocity (sm) program, allowing us to display other broker's listings on our website. All properties are subject to prior sale, change or withdrawal.



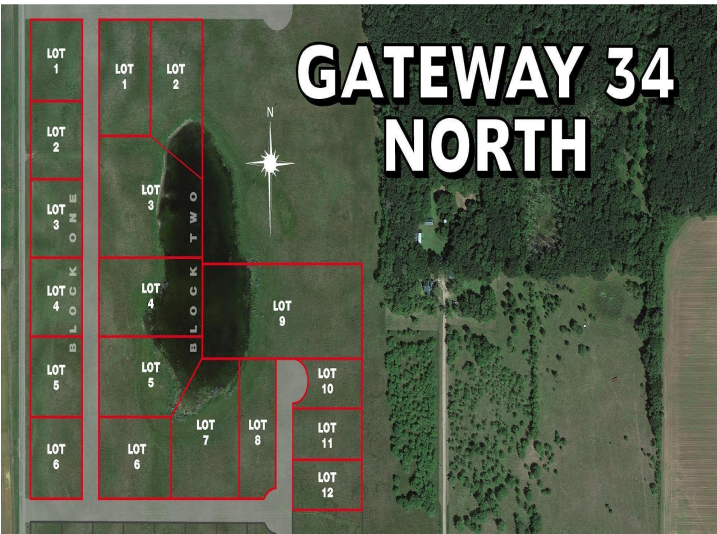
Call Affinity Real Estate

**218-237-3333**

[info@affinityrealestate.com](mailto:info@affinityrealestate.com)



Affinity Real Estate - 600 Park Avenue South - Park Rapids MN 56470



website: [www.AffinityRealEstate.com](http://www.AffinityRealEstate.com) | email: [info@affinityrealestate.com](mailto:info@affinityrealestate.com) | office: 218-237-3333 | fax:218-237-3377



**\$55,000**

MLS 6535361 Land  
xxxx3 401st Avenue  
Perham MN 56573