



MLS 6535403 Land

\$55,000

1.69 Square Feet
Raw Land

xxxx2 443rd Street
Perham MN 56573

Status: Active

Description:

Beautiful Building site with Pond view. Great location to Perham and surrounding lakes area. Bike Trail from Perham to Maplewood State Park is close by. New road will be Asphalted at the developers expense. No Assessments to buyers. Build a new home, shed or Shouse. Covenants apply but are favorable for these three options.

Additional Details:

Lot Acres	1.69
Lot Dimensions	200 x 308
School District	549
Taxes	\$78
Taxes with Assessments	\$78
Tax Year	2024

Additional Features:

Driving Directions:

West of Perham on Hwy 34 to 400th Ave North to 443rd Ave East to property on Right



Listed By:
New Horizons Realty of Perham

Affinity Real Estate Inc. participates in the Regional Multiple Listing Service of Minnesota, Inc Broker Reciprocity (sm) program, allowing us to display other broker's listings on our website. All properties are subject to prior sale, change or withdrawal.



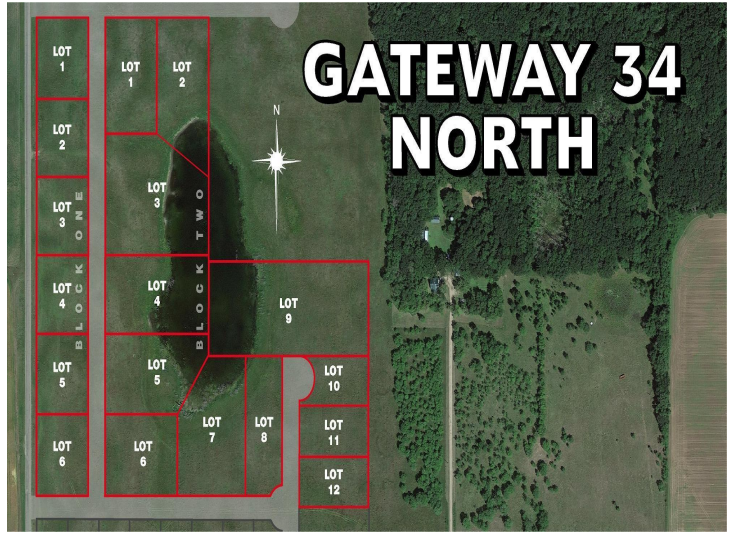
Call Affinity Real Estate

218-237-3333

info@affinityrealestate.com



Affinity Real Estate - 600 Park Avenue South - Park Rapids MN 56470



website: www.AffinityRealEstate.com | email: info@affinityrealestate.com | office: 218-237-3333 | fax:218-237-3377



\$55,000
MLS 6535403 Land
xxxx2 443rd Street
Perham MN 56573