



MLS 6535451 Residential

**\$300,000**

2,240 sq ft  
3 bedrooms  
2 baths

15851 Conifer Circle  
Park Rapids MN 56470

Status: Pending

**Description:**

Location, location, location. This three-bedroom, two-bath home set on 2.5 acres just outside of Park Rapids offers the perfect combination of privacy and easy access to all the amenities the city provides. Set on a tarred road this home features hardwood floors, tile bathrooms, newer windows, doors, roof and siding all with an open concept feel. An attached garage and a detached 28' x 48' shop that is half heated provides plenty of storage for all your needs. This home is one you will want to see in person. Setup up your showing today!

**Additional Details:**

Year Built	1992
Lot Acres	2.5
Lot Dimensions	295x375
Garage Stalls	2
School District	309
Taxes	\$1,606
Taxes with Assessments	\$1,816
Tax Year	2024

**Additional Features:**

**Fuel:** Propane **Heat:** Baseboard, Boiler, Ductless Mini-Split, Hot Water

**Driving Directions:**

From Hwy 71 and Hwy 34 in Park Rapids head east on Hwy 34. Take a right on Cty Rd 6. Follow approx. 2 miles to Conifer Circle on your right. Follow to property on the right.



Listed By:  
Keller Williams Realty Professionals

Affinity Real Estate Inc. participates in the Regional Multiple Listing Service of Minnesota, Inc Broker Reciprocity (sm) program, allowing us to display other broker's listings on our website. All properties are subject to prior sale, change or withdrawal.



**Call Affinity Real Estate**

**218-237-3333**

**info@affinityrealestate.com**



**Affinity Real Estate - 600 Park Avenue South - Park Rapids MN 56470**



website: [www.AffinityRealEstate.com](http://www.AffinityRealEstate.com) | email: [info@affinityrealestate.com](mailto:info@affinityrealestate.com) | office: 218-237-3333 | fax:218-237-3377

**Affinity**  
REAL ESTATE INC

**\$300,000**  
MLS 6535451 Residential  
15851 Conifer Circle  
Park Rapids MN 56470



website: [www.AffinityRealEstate.com](http://www.AffinityRealEstate.com) | email: [info@affinityrealestate.com](mailto:info@affinityrealestate.com) | office: 218-237-3333 | fax:218-237-3377

**Affinity**  
REAL ESTATE INC

**\$300,000**  
MLS 6535451 Residential  
15851 Conifer Circle  
Park Rapids MN 56470



website: [www.AffinityRealEstate.com](http://www.AffinityRealEstate.com) | email: [info@affinityrealestate.com](mailto:info@affinityrealestate.com) | office: 218-237-3333 | fax:218-237-3377

**Affinity**  
REAL ESTATE INC

**\$300,000**  
MLS 6535451 Residential  
15851 Conifer Circle  
Park Rapids MN 56470



website: [www.AffinityRealEstate.com](http://www.AffinityRealEstate.com) | email: [info@affinityrealestate.com](mailto:info@affinityrealestate.com) | office: 218-237-3333 | fax:218-237-3377



**\$300,000**  
MLS 6535451 Residential  
15851 Conifer Circle  
Park Rapids MN 56470



website: [www.AffinityRealEstate.com](http://www.AffinityRealEstate.com) | email: [info@affinityrealestate.com](mailto:info@affinityrealestate.com) | office: 218-237-3333 | fax:218-237-3377

**Affinity**  
REAL ESTATE INC

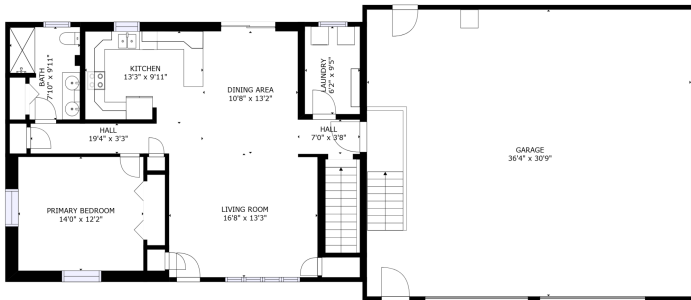
**\$300,000**  
MLS 6535451 Residential  
15851 Conifer Circle  
Park Rapids MN 56470



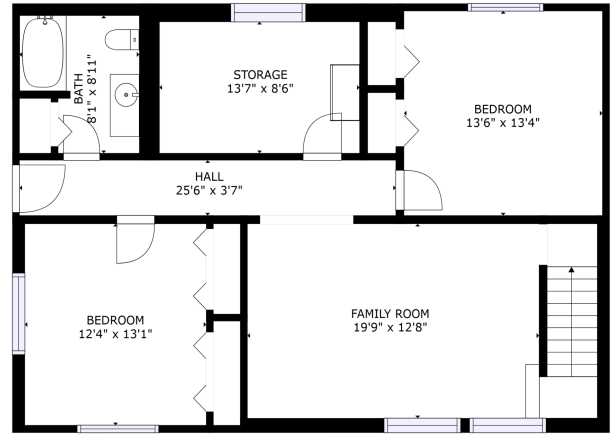
website: [www.AffinityRealEstate.com](http://www.AffinityRealEstate.com) | email: [info@affinityrealestate.com](mailto:info@affinityrealestate.com) | office: 218-237-3333 | fax:218-237-3377



**\$300,000**  
MLS 6535451 Residential  
15851 Conifer Circle  
Park Rapids MN 56470



TOTAL: 1935 sq. ft.  
 Below Ground: 912 sq. ft. FLOOR 2: 1020 sq. ft.  
 EXCLUDED AREAS: STORAGE: 116 sq. ft., GARAGE: 1121 sq. ft.  
SIZE AND DIMENSIONS ARE APPROXIMATE, ACTUAL MAY VARY.



TOTAL: 1935 sq. ft.  
 Below Ground: 915 sq. ft. FLOOR 1: 1020 sq. ft.  
 EXCLUDED AREAS: STORAGE: 116 sq. ft., GARAGE: 1121 sq. ft.  
SIZE AND DIMENSIONS ARE APPROXIMATE, ACTUAL MAY VARY.



FLOOR 2

FLOOR 1

website: [www.AffinityRealEstate.com](http://www.AffinityRealEstate.com) | email: [info@affinityrealestate.com](mailto:info@affinityrealestate.com) | office: 218-237-3333 | fax: 218-237-3377



**\$300,000**  
 MLS 6535451 Residential  
 15851 Conifer Circle  
 Park Rapids MN 56470