



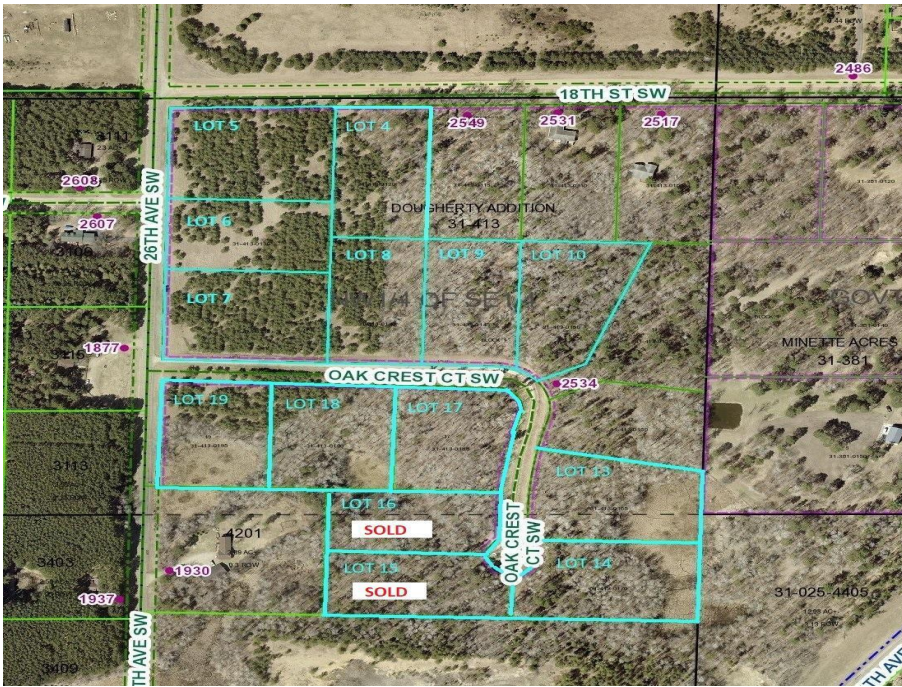
MLS 6536067 Land

\$320,000

27 Acres
Raw Land

TBD* 26TH Avenue
Backus MN 56435

Status: Active



Description:

Attention Developers / Builders - This prime 27 acre tract has been fully developed with 12 prime surveyed build sites available. Each site has power to the lot and excellent road frontage for easy access. The land is rolling with many mature Red Pines and hardwoods allowing for great views from each homesite. The lots all lie within a mile of town adding multiple amenities for your future home.

Additional Details:

Lot Acres	27
Lot Dimensions	790x626x405x755xIRREG.
School District	2174
Taxes	\$1,400
Taxes with Assessments	\$1,400
Tax Year	2024

Additional Features:

Driving Directions:

From Pine River go 1 mile north on 371 to 26th Avenue SW then right on 26th for 3/4 mile to Oak Crest Court. Lots face 26th Avenue and 18th Street SW as well as Oak Crest Court SW.



Listed By:
Heartland Real Estate

Affinity Real Estate Inc. participates in the Regional Multiple Listing Service of Minnesota, Inc Broker Reciprocity (sm) program, allowing us to display other broker's listings on our website. All properties are subject to prior sale, change or withdrawal.



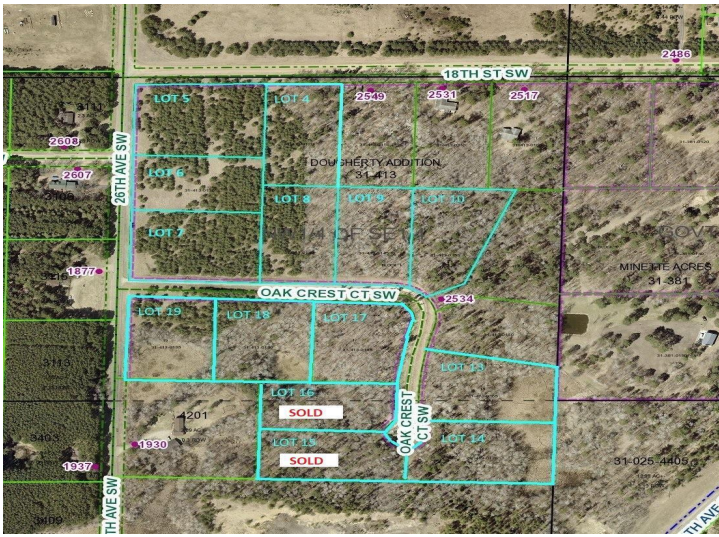
Call Affinity Real Estate

218-237-3333

info@affinityrealestate.com



Affinity Real Estate - 600 Park Avenue South - Park Rapids MN 56470



website: www.AffinityRealEstate.com | email: info@affinityrealestate.com | office: 218-237-3333 | fax:218-237-3377



\$320,000
MLS 6536067 Land
TBD* 26TH Avenue
Backus MN 56435