



MLS 6536074 Residential

**\$249,900**

1,020 sq ft  
2 bedrooms  
1 baths

27137 Nanik Drive  
Staples MN 56479

Status: Pending

**Description:**

This charming property provides a serene country setting just a short distance from town. With over 7 acres, it's ideal for a small hobby farm. The previous owners had chickens and horses, complete with an electric fence and a loafing shed. The move-in ready home has undergone many updates, including the septic system, roof, windows, and bathroom. just to name a few.

**Additional Details:**

Year Built	1982
Lot Acres	7.2
Lot Dimensions	410x805x450x645
Garage Stalls	2
School District	2170
Taxes	\$1,352
Taxes with Assessments	\$1,352
Tax Year	2023

**Additional Features:**

**Basement:** Block, Full, Unfinished **Fuel:** Propane, Wood **Garage:** 2 **Heat:** Forced Air, Fireplace(s) **Sewer:** Septic System Compliant - Yes, Tank with Drainage Field **Water:** Drilled **Air Conditioning:** Central Air

**Driving Directions:**

From Staples North on Co Rd 30 to Right on Co Rd 7, property on corner of Co Rd 30 and Co Rd 7



Listed By:  
Edina Realty, Inc.

Affinity Real Estate Inc. participates in the Regional Multiple Listing Service of Minnesota, Inc Broker Reciprocity (sm) program, allowing us to display other broker's listings on our website. All properties are subject to prior sale, change or withdrawal.



**Call Affinity Real Estate**

**218-237-3333**

**info@affinityrealestate.com**



**Affinity Real Estate - 600 Park Avenue South - Park Rapids MN 56470**



website: [www.AffinityRealEstate.com](http://www.AffinityRealEstate.com) | email: [info@affinityrealestate.com](mailto:info@affinityrealestate.com) | office: 218-237-3333 | fax: 218-237-3377

**Affinity**  
REAL ESTATE INC

**\$249,900**  
MLS 6536074 Residential  
27137 Nanik Drive  
Staples MN 56479





website: [www.AffinityRealEstate.com](http://www.AffinityRealEstate.com) | email: [info@affinityrealestate.com](mailto:info@affinityrealestate.com) | office: 218-237-3333 | fax: 218-237-3377

**Affinity**  
REAL ESTATE INC

**\$249,900**  
MLS 6536074 Residential  
27137 Nanik Drive  
Staples MN 56479



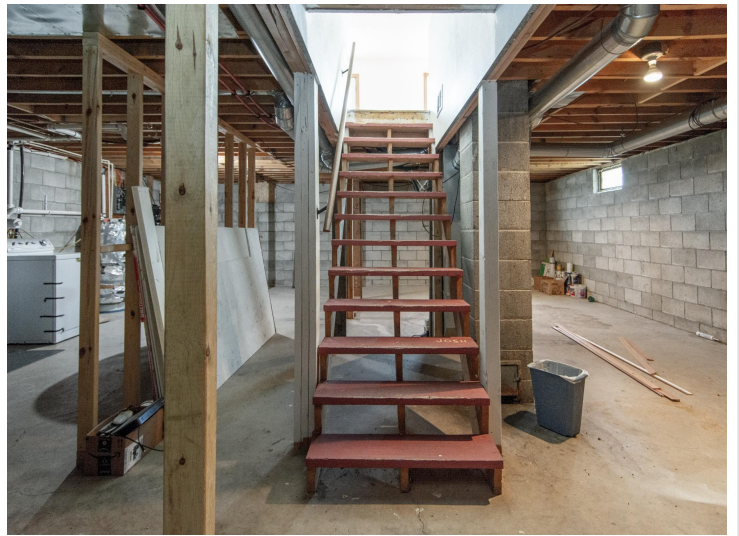


website: [www.AffinityRealEstate.com](http://www.AffinityRealEstate.com) | email: [info@affinityrealestate.com](mailto:info@affinityrealestate.com) | office: 218-237-3333 | fax: 218-237-3377

**Affinity**  
REAL ESTATE INC

**\$249,900**  
MLS 6536074 Residential  
27137 Nanik Drive  
Staples MN 56479





website: [www.AffinityRealEstate.com](http://www.AffinityRealEstate.com) | email: [info@affinityrealestate.com](mailto:info@affinityrealestate.com) | office: 218-237-3333 | fax: 218-237-3377



**\$249,900**  
 MLS 6536074 Residential  
 27137 Nanik Drive  
 Staples MN 56479



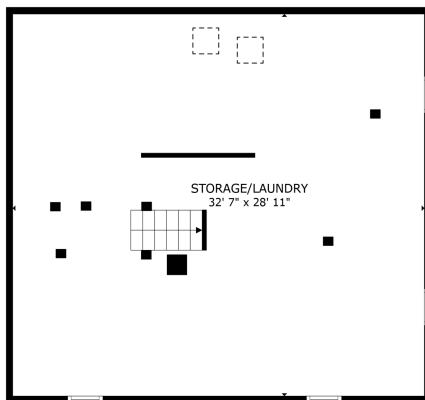


website: [www.AffinityRealEstate.com](http://www.AffinityRealEstate.com) | email: [info@affinityrealestate.com](mailto:info@affinityrealestate.com) | office: 218-237-3333 | fax: 218-237-3377



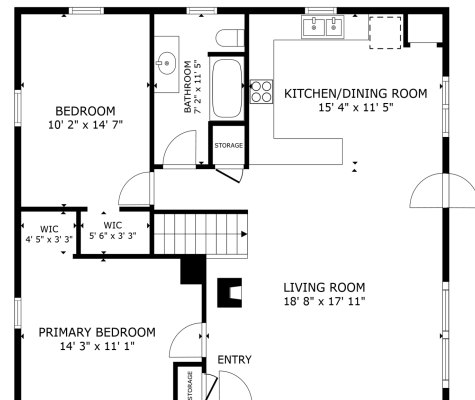
**\$249,900**  
 MLS 6536074 Residential  
 27137 Nanik Drive  
 Staples MN 56479





FLOOR 1

GROSS INTERNAL AREA  
FLOOR 1 942 SQ. FT. FLOOR 2 986 SQ. FT.  
TOTAL - 1,928 SQ. FT.  
SIZES AND DIMENSIONS ARE APPROXIMATE, ACTUAL MAY VARY



FLOOR 2

GROSS INTERNAL AREA  
FLOOR 1 942 SQ. FT. FLOOR 2 986 SQ. FT.  
TOTAL - 1,928 SQ. FT.  
SIZES AND DIMENSIONS ARE APPROXIMATE, ACTUAL MAY VARY



website: [www.AffinityRealEstate.com](http://www.AffinityRealEstate.com) | email: [info@affinityrealestate.com](mailto:info@affinityrealestate.com) | office: 218-237-3333 | fax: 218-237-3377



**\$249,900**  
MLS 6536074 Residential  
27137 Nanik Drive  
Staples MN 56479