



MLS 6536293 Lake Home

\$1,100,000

5,325 sq ft
4 bedrooms
4 baths

1145 Wild Pine Lane
Longville MN 56655

Waterfront: Wabedo

Status: Pending

Description:

This inviting home on Wabedo Lake has 198' of shoreline and welcomes you with its premier exterior. Step into a carefully designed interior with exposed beam architecture and natural wood elements. With its stunning gas fireplace, the great room seamlessly blends with the kitchen, dinette, and 4-season porch, with soaring cathedral ceilings and expansive windows. The gourmet kitchen has Viking appliances, including a 6-burner gas stovetop and wine fridge. The owner's suite is a retreat with a fireplace, decks, ensuite, and a spacious walk-in closet. The loft features a sitting area, a huge bedroom, and a bathroom. The lower level walkout has large windows, ample entertainment space, two bedrooms, and a bathroom. The geothermal heated floors ensure year-round comfort. The 3-car garage is heated and includes storage space. With meticulous attention to detail, this remarkable property embodies the perfect up-north home, offering luxury and comfort for year-round enjoyment.

Additional Details:


Year Built	2007
Lot Acres	1.45
Lot Dimensions	198x434x169x323
Garage Stalls	3
School District	118
Taxes	\$5,022
Taxes with Assessments	\$5,088
Tax Year	2024

Additional Features:

Fuel: Electric, Propane **Heat:** Forced Air, Fireplace(s), Geothermal, Radiant Floor

Driving Directions:

From Longville - Head out of town on Co Rd 7. Turn onto Co Rd 54 for 4.1 miles. Turn right onto Wabedo Pass Rd NE for 1.1 miles. Turn left onto Wild Pines Ln NE to the subject property.



Listed By:
Heartland Real Estate

Affinity Real Estate Inc. participates in the Regional Multiple Listing Service of Minnesota, Inc Broker Reciprocity (sm) program, allowing us to display other broker's listings on our website. All properties are subject to prior sale, change or withdrawal.



Call Affinity Real Estate
218-237-3333
info@affinityrealestate.com





Affinity Real Estate - 600 Park Avenue South - Park Rapids MN 56470



website: www.AffinityRealEstate.com | email: info@affinityrealestate.com | office: 218-237-3333 | fax:218-237-3377



\$1,100,000
MLS 6536293 Lake Home
1145 Wild Pine Lane
Longville MN 56655



website: www.AffinityRealEstate.com | email: info@affinityrealestate.com | office: 218-237-3333 | fax:218-237-3377

Affinity
REAL ESTATE INC

\$1,100,000
MLS 6536293 Lake Home
1145 Wild Pine Lane
Longville MN 56655



website: www.AffinityRealEstate.com | email: info@affinityrealestate.com | office: 218-237-3333 | fax: 218-237-3377

Affinity
REAL ESTATE INC

\$1,100,000
MLS 6536293 Lake Home
1145 Wild Pine Lane
Longville MN 56655



website: www.AffinityRealEstate.com | email: info@affinityrealestate.com | office: 218-237-3333 | fax:218-237-3377



\$1,100,000
MLS 6536293 Lake Home
1145 Wild Pine Lane
Longville MN 56655



website: www.AffinityRealEstate.com | email: info@affinityrealestate.com | office: 218-237-3333 | fax:218-237-3377

Affinity
REAL ESTATE INC

\$1,100,000
MLS 6536293 Lake Home
1145 Wild Pine Lane
Longville MN 56655



website: www.AffinityRealEstate.com | email: info@affinityrealestate.com | office: 218-237-3333 | fax:218-237-3377

Affinity
REAL ESTATE INC

\$1,100,000
MLS 6536293 Lake Home
1145 Wild Pine Lane
Longville MN 56655



website: www.AffinityRealEstate.com | email: info@affinityrealestate.com | office: 218-237-3333 | fax:218-237-3377

Affinity
REAL ESTATE INC

\$1,100,000
MLS 6536293 Lake Home
1145 Wild Pine Lane
Longville MN 56655



website: www.AffinityRealEstate.com | email: info@affinityrealestate.com | office: 218-237-3333 | fax:218-237-3377



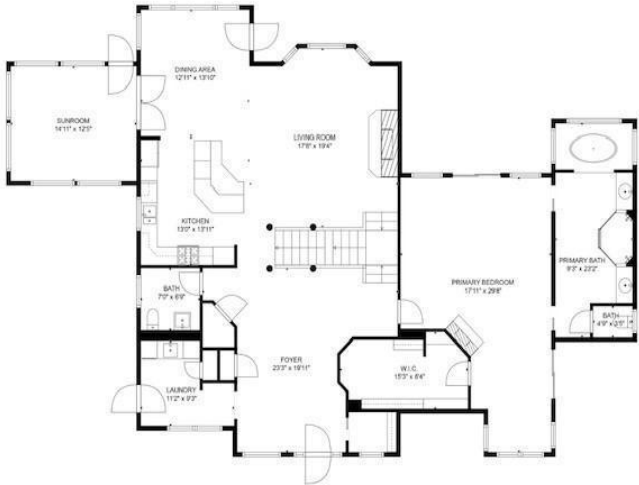
\$1,100,000
MLS 6536293 Lake Home
1145 Wild Pine Lane
Longville MN 56655



website: www.AffinityRealEstate.com | email: info@affinityrealestate.com | office: 218-237-3333 | fax:218-237-3377



\$1,100,000
MLS 6536293 Lake Home
1145 Wild Pine Lane
Longville MN 56655



MEASUREMENTS ARE CALCULATED BY CURSUSA TECHNOLOGY. DEEMED HIGHLY RELIABLE BUT NOT GUARANTEED.



website: www.AffinityRealEstate.com | email: info@affinityrealestate.com | office: 218-237-3333 | fax:218-237-3377



\$1,100,000
 MLS 6536293 Lake Home
 1145 Wild Pine Lane
 Longville MN 56655



website: www.AffinityRealEstate.com | email: info@affinityrealestate.com | office: 218-237-3333 | fax:218-237-3377

Affinity
REAL ESTATE INC

\$1,100,000
MLS 6536293 Lake Home
1145 Wild Pine Lane
Longville MN 56655