



MLS 6537075 Residential

\$229,900

2,632 sq ft
3 bedrooms
2 baths

708 Front Avenue
Park Rapids MN 56470

Status: Pending

Description:

Take a look at this Park Rapids home! Featuring a spacious floor plan with 3 bedrooms & 1 bathroom on the main level. Hardwood floor in the living room, tons of cabinet space in the kitchen, conveniently located mud room/laundry room off the garage. The lower level includes additional living space, a ¾ bath, and an opportunity to add a 4th bedroom with the addition of an egress window. The exterior offers privacy in the backyard and is located close to downtown Park Rapids & the hospital.

Additional Details:

Year Built	1968
Lot Acres	0.35
Lot Dimensions	108x140
Garage Stalls	2
School District	309
Taxes	\$2,648
Taxes with Assessments	\$2,585
Tax Year	2024

Additional Features:

Basement: Block, Daylight/Lookout Windows, Finished, Full **Fuel:** Natural Gas **Garage:** 2 **Heat:** Baseboard, Boiler, Ductless Mini-Split **Sewer:** City Sewer/Connected **Water:** City Water/Connected **Air Conditioning:** Ductless Mini-Split

Driving Directions:

From 71/34 in Park Rapids. South on 71/Park Ave to a right onto 8th Street, follow to a right onto front avenue and property on right.



Listed By:
Wolff & Simon Real Estate

Affinity Real Estate Inc. participates in the Regional Multiple Listing Service of Minnesota, Inc Broker Reciprocity (sm) program, allowing us to display other broker's listings on our website. All properties are subject to prior sale, change or withdrawal.



Call Affinity Real Estate

218-237-3333

info@affinityrealestate.com



Affinity Real Estate - 600 Park Avenue South - Park Rapids MN 56470



website: www.AffinityRealEstate.com | email: info@affinityrealestate.com | office: 218-237-3333 | fax:218-237-3377

Affinity
REAL ESTATE INC

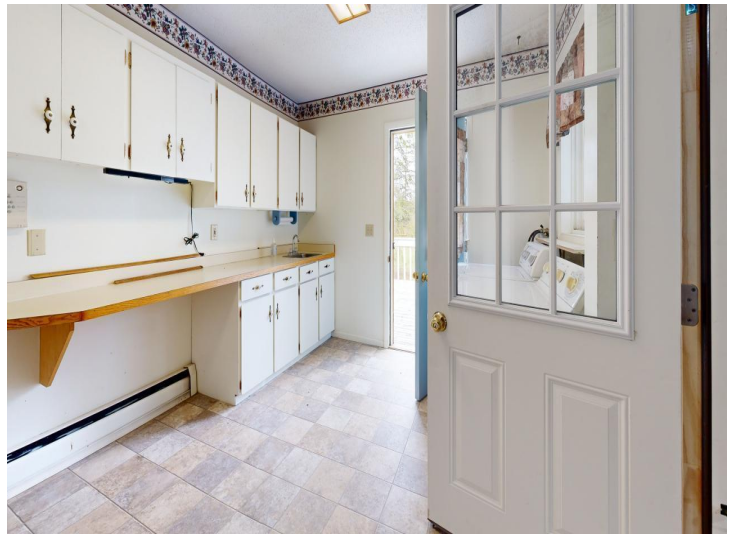
\$229,900
MLS 6537075 Residential
708 Front Avenue
Park Rapids MN 56470



website: www.AffinityRealEstate.com | email: info@affinityrealestate.com | office: 218-237-3333 | fax:218-237-3377

Affinity
REAL ESTATE INC

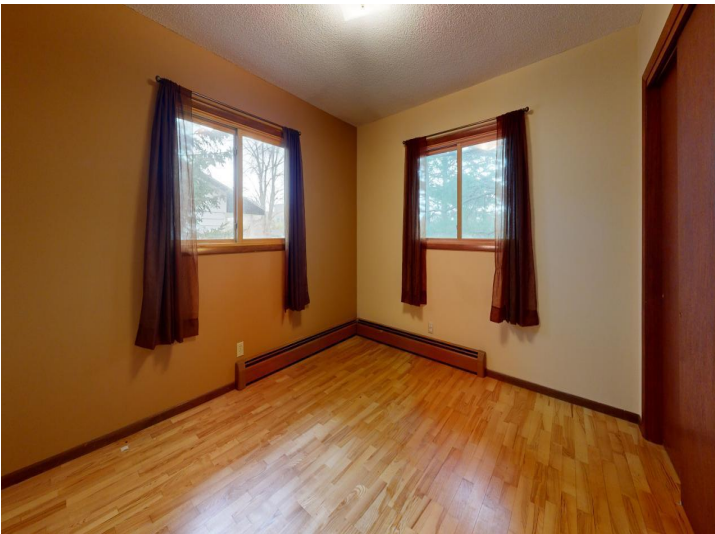
\$229,900
MLS 6537075 Residential
708 Front Avenue
Park Rapids MN 56470



website: www.AffinityRealEstate.com | email: info@affinityrealestate.com | office: 218-237-3333 | fax:218-237-3377

Affinity
REAL ESTATE INC

\$229,900
MLS 6537075 Residential
708 Front Avenue
Park Rapids MN 56470



website: www.AffinityRealEstate.com | email: info@affinityrealestate.com | office: 218-237-3333 | fax:218-237-3377



\$229,900
MLS 6537075 Residential
708 Front Avenue
Park Rapids MN 56470



website: www.AffinityRealEstate.com | email: info@affinityrealestate.com | office: 218-237-3333 | fax:218-237-3377



\$229,900
MLS 6537075 Residential
708 Front Avenue
Park Rapids MN 56470



website: www.AffinityRealEstate.com | email: info@affinityrealestate.com | office: 218-237-3333 | fax:218-237-3377



\$229,900
MLS 6537075 Residential
708 Front Avenue
Park Rapids MN 56470